

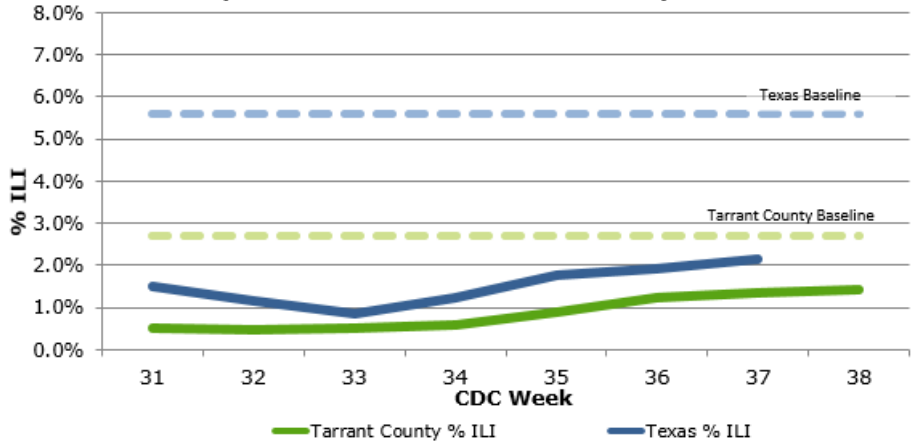


Tarrant County Influenza Surveillance Weekly Report
CDC Week 39: Sept 22-28, 2019

**Influenza Activity Code:
 County and State Levels**

Tarrant County: Week 39
Sporadic
Tarrant County: Week 38
Sporadic
Texas: Week 38
Not determined

Graph 1. Recent Texas and Tarrant County % ILI

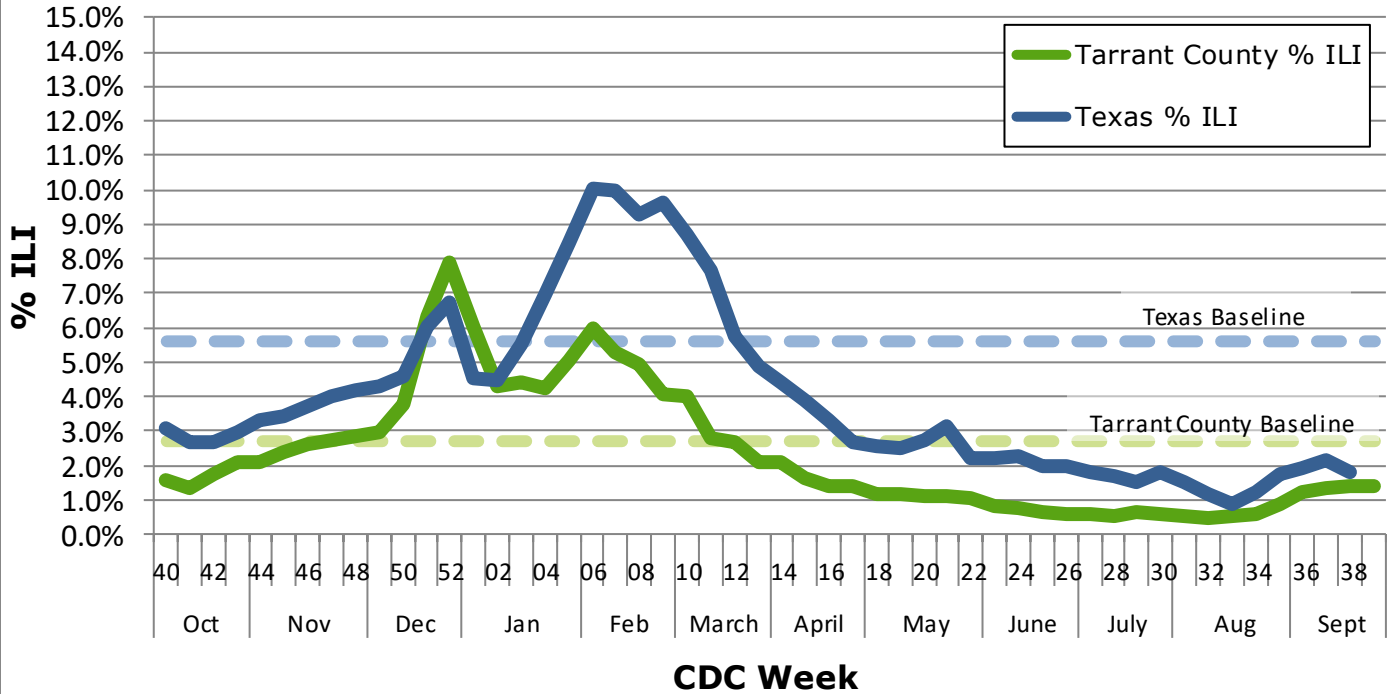


Respiratory Virus Activity Summary

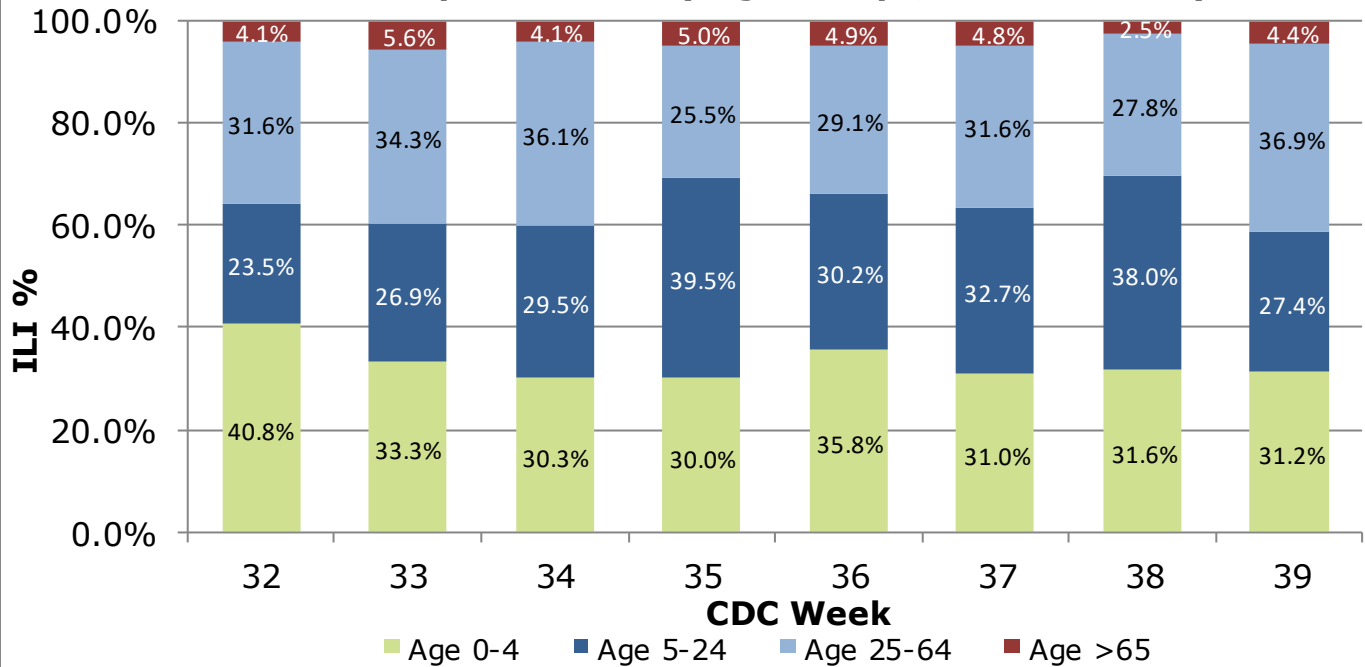
- The percentage of reported influenza-like illness (ILI) in Tarrant County remained the same at 1.4% in week 38 and in week 39 and is currently below the 2018-2019 Tarrant County baseline (2.7%).
- Due to the closing of the traditional school year, data on student absenteeism, absenteeism due to ILI, and nurses' office visits due to ILI will not be reported until the commencement of the 2019-2020 school year in August 2019.
- The percentage of rapid flu test positives in Tarrant County increased from 2.8% in week 38 to 2.9% in week 39.
- During the 2018-2019 influenza season, 0 Tarrant County influenza-associated pediatric deaths have been reported. As of week 38, 17 influenza-associated pediatric deaths have been reported in Texas, with a total of 136 reported nationwide for the 2018-2019 season.
- During the 2018-2019 influenza season, 0 influenza outbreaks have been reported in Tarrant County schools and 8 localized influenza outbreaks have been reported within institutions in Tarrant County.
- Since last report, 8 surveillance specimens were tested by The North Texas Regional Laboratory. The following types and number of viruses were detected in these specimens: RSV (2) and Rhinovirus (1). Cumulatively this season, the North Texas Regional Laboratory at Tarrant County Public Health has tested 423 surveillance specimens and of these, 145 have been positive for influenza.
- In Texas during week 38, the proportion of outpatient visits for ILI, 1.8%, was below the state baseline of 5.6%.
- Nationally during week 38, 3.2% of specimens tested and reported to the CDC were positive for influenza. The proportion of outpatient visits for ILI (1.3%) was below the national baseline (2.2%). The proportion of deaths in week 37 attributed to pneumonia and influenza from the National Center for Health Statistics (4.6%) was below the epidemic threshold (5.7%).

Influenza Like Illness (ILI): Local and State Levels

Graph 2. Texas and Tarrant County % ILI



Graph 3. ILI % by Age Groups, Tarrant County

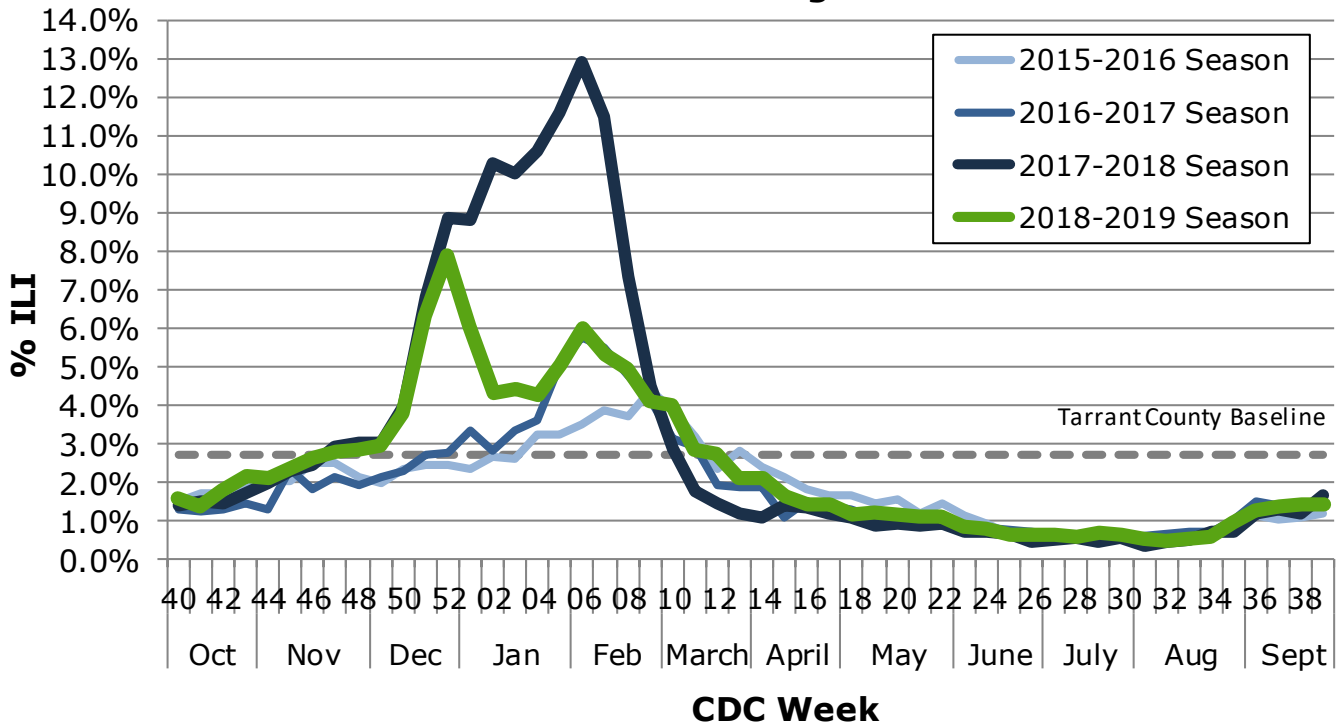


In week 39, 1.4% of visits to health care providers were due to ILI. ILI levels are currently below the county established baseline of 2.7% and are lower than the state of Texas levels from the week prior. In Tarrant County, of the 317 reported patients presenting with ILI during week 39, the age group with the largest percentage of the reported ILI patients, 36.9%, was the 25-64 age group.

NOTE: Tarrant County ILI activity is assessed using information provided by surveillance participants and the Electronic Surveillance System for the Early Notification of Community-based Epidemics (ESSENCE). For week 39, 21 surveillance participants - 17 Hospitals, 2 Colleges/Universities, 1 Emergency/Urgent Care Center and 1 Business - reported ILI information to Tarrant County Public Health. Texas ILI activity is assessed using information provided by a network of providers. For week 38, 74 providers reported information to the Texas Department of State Health Services.

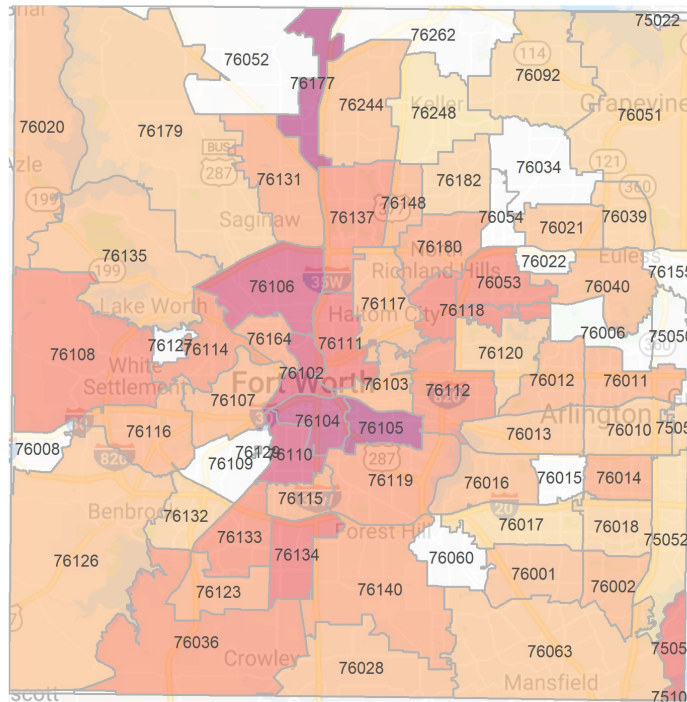
Tarrant County Historical ILI and ESSENCE Geographical Distribution Map

Graph 4. Tarrant County % of patient visits due to ILI during flu season 2015-2016 through 2018-2019



Map 1. Tarrant County ER ILI Cases by Zip Code, Week 39

Overall rate: 33.3, maximum rate was 102 in zip code 76105

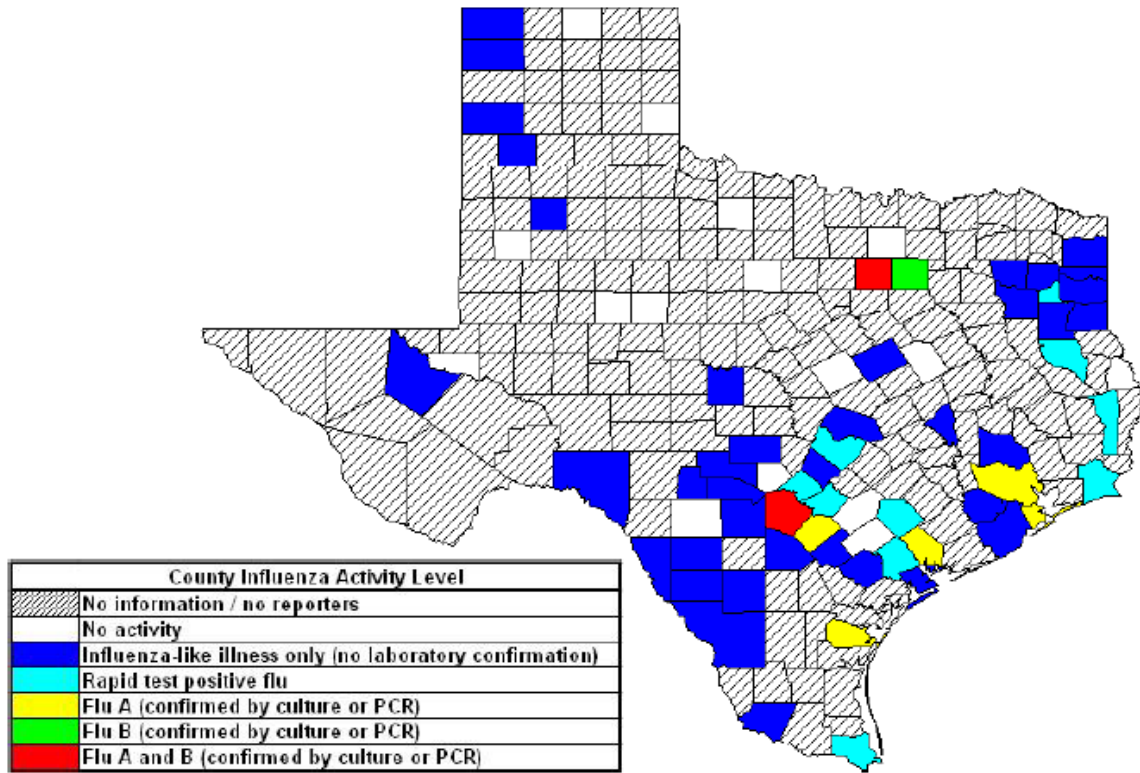


ILI per 100,000 population
 0 40 80 120 160 200+

Zip codes with ≤5 cases are assigned 0. Tarrant County ILI data by zip code is obtained from ESSENCE and includes ILI numbers from 46 hospitals that voluntarily provide data based on chief complaints of Tarrant County residents admitted to Emergency Departments in North Central Texas. Zip code population data is obtained from American Community Survey 2017 5 year estimate.

Rapid Influenza Test Results and School Absenteeism

Map 2: Texas County Specific Influenza Activity, CDC Week 38



Influenza activity level corresponds to current MMWR week only and does not reflect previous weeks' activity. The majority of influenza cases are not reportable by law to the Texas Department of State Health Services. This map contains data from sentinel sites and does not represent all influenza cases in the state. Positive laboratory results are reported according to specimen collection date or date received in the lab if the former is unknown. <http://www.dshs.texas.gov/IDCU/disease/influenza/surveillance/2019.aspx>

*Note: The most recent U.S. ILINet Activity Indicator Map was released by the CDC at the end of the flu season, Week 20 (ending May 18, 2019). See Tarrant County week 21 influenza report to view map.

Table 1. Influenza Rapid Test Results, Tarrant County

CDC Week Number	37 (Sept 8-14)	38 (Sept 15-21)	39 (Sept 22-28)
# Influenza Tests Performed	513	635	820
% Influenza Positive	2.3%	2.8%	2.9%
# Influenza A Positive	3	4	4
% Influenza A Positive	25.0%	22.2%	16.7%
# Influenza B Positive	9	14	20
% Influenza B Positive	75.0%	77.8%	83.3%
# Non-differentiated Positive	0	0	0
% Non-differentiated Positive	0.0%	0.0%	0.0%

NOTE: Tarrant County rapid influenza test results are reported weekly by influenza surveillance participants. For CDC week 38, rapid influenza test results were reported by 12 hospitals, 1 Emergency/Urgent Care Center, and 2 colleges/universities.

Influenza Confirmatory Test Results: Tarrant County

Table 2. North Texas Regional Laboratory: Respiratory Virus Results¹

	Current Week	2018-2019 Season
Number of Specimens Tested	8	423
Positive Specimens	3 (37.5%)	229 (54.1%)
Influenza A	0 (0.0%)	115 (50.2%)
Influenza B	0 (0.0%)	30 (13.1%)
Respiratory Syncytial Virus	2 (66.7%)	24 (10.5%)
Adenovirus	0 (0.0%)	13 (5.7%)
Human Metapneumovirus	0 (0.0%)	7 (3.1%)
Parainfluenza-1	0 (0.0%)	3 (1.3%)
Parainfluenza-2	0 (0.0%)	1 (0.4%)
Parainfluenza-3	0 (0.0%)	8 (3.5%)
Rhinovirus	1 (33.3%)	36 (15.7%)
Inconclusive²	0 (0.0%)	0 (0.0%)

¹ Laboratory results based on real-time PCR analysis; information is for the 2018-2019 season.

² Inconclusive for influenza A and influenza B; not included in positive specimens count.

NOTE: Percentages do not add up to 100% due to co-infections. 1 specimen has tested positive with a coinfection: Adenovirus and Rhinovirus (2), Respiratory Syncytial Virus and Rhinovirus (1), Respiratory Syncytial Virus and Adenovirus (1), Rhinovirus and Human Metapneumovirus (1), Influenza A/H1 and Respiratory Syncytial Virus (1), Influenza A/H1 and Rhinovirus (1), Influenza A/H3 and Rhinovirus

Table 3. North Texas Regional Laboratory: Influenza Results¹

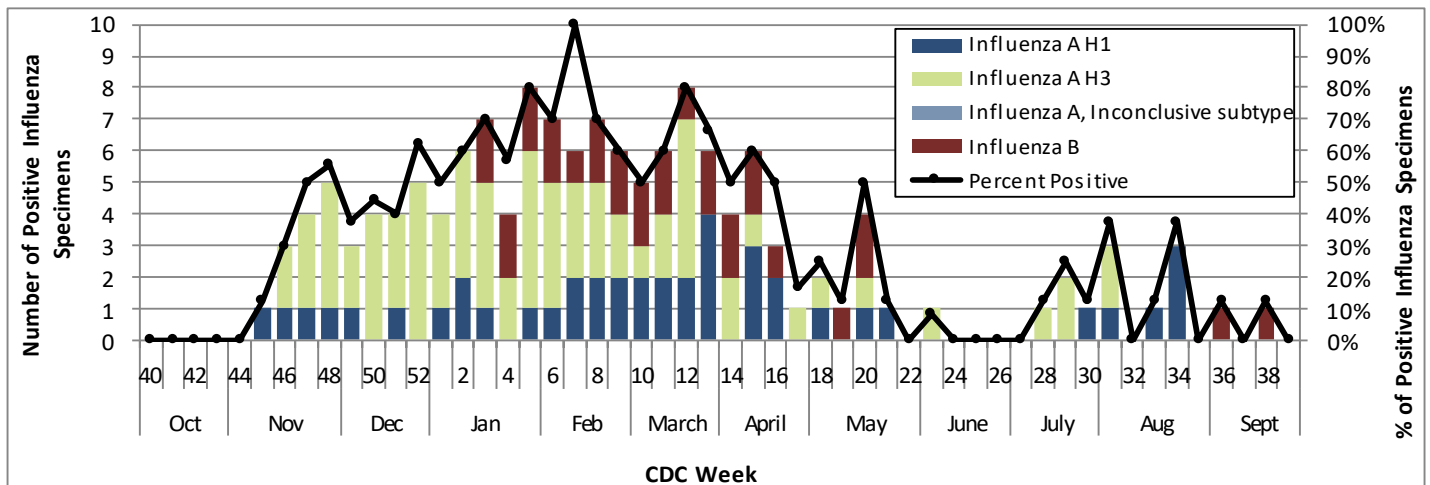
	Current Week	2018-2019 Season
Influenza A	0	115
Influenza A H1	-	42 (36.5%)
Influenza A H3	-	73 (63.5%)
Influenza A, Inconclusive subtype	-	0 (0.0%)
Influenza A, Unsubtypeable ²	-	0 (0.0%)
Influenza B	0	30
Influenza B Yamagata ³	-	7 (24.1%)
Influenza B Victoria ³	-	22 (75.9%)
Influenza B, Inconclusive	-	0 (0.0%)

¹ Laboratory results based on real-time PCR analysis; information is for the 2018-2019 season.

² Influenza A subtype not determined; further analysis pending

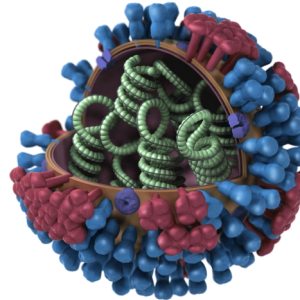
³ Influenza B genotyping is only included in current week column if genotyping occurred in the same week as original PCR testing.

Graph 6. North Texas Regional Laboratory: Influenza Virus Results¹



**Tarrant County Public Health
Influenza Surveillance
Epidemiology and Health Information**

**1101 South Main Street, Suite 2200
Fort Worth, TX 76104**



Veerinder (Vinny) Taneja, MBBS; MPH
Director, Tarrant County Public Health

*The Tarrant County Influenza
Surveillance Weekly Report* is
available on the Tarrant County Public
Health web site at:

flu.tarrantcounty.com

**If you have questions or comments
regarding influenza surveillance,
please contact:**

Laura Lockwood, MPH, CPH
Influenza Surveillance Specialist
lblockwood@tarrantcounty.com

NOTE:

Influenza-like Illness (ILI) is defined as fever (temperature $\geq 100^{\circ}\text{F}$) plus a cough OR a sore throat, in the absence of a known cause other than influenza.

Tarrant County reporting quadrants consist of Northwest, Northeast, Southwest and Southeast regions within the boundaries of Interstate 35 and Interstate 30.

Tarrant County ILI baselines were determined using a similar method as the Centers for Disease Control Prevention Regional ILI baselines and Texas Department of State Health Services Texas baseline. Regional ILI baselines are determined by the Centers for Disease Control and Prevention and can be accessed at <http://www.cdc.gov/flu/weekly/overview.htm>

Additional information regarding Tarrant County, Texas and national ILI activity can be accessed at flu.tarrantcounty.com

<http://www.dshs.texas.gov/IDCU/disease/influenza/surveillance/2019.aspx>

<http://www.cdc.gov/flu/weekly/>

Russ Jones, MPH
Division Manager & Chief Epidemiologist
Epidemiology and Health Information
Tarrant County Public Health

Main Epidemiology Division Number : (817) 321-5350
Disease Reporting Fax Number: (817) 850-2366