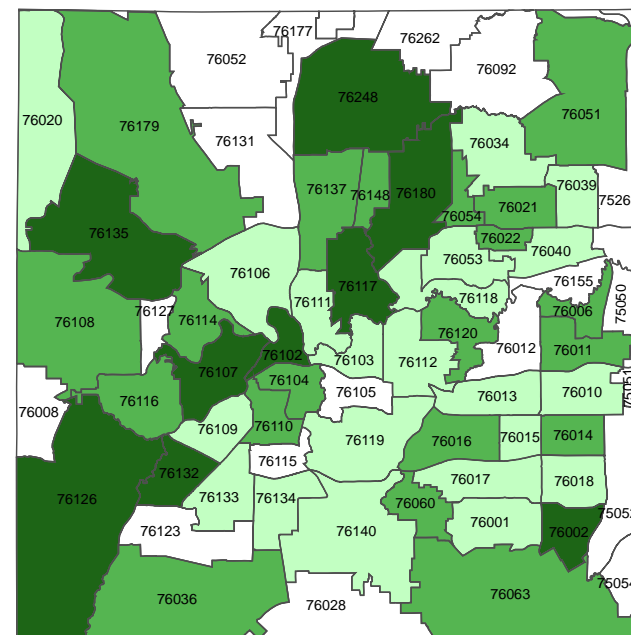


Suicide in Tarrant County, 2002-2004

Suicide was the 2nd leading cause of death among youth and young adults between the ages 15-24 yrs in Tarrant County in 2004.



Suicide was the 3rd leading cause of death among youth and young adults between the ages of 15-24 yrs in Texas in 2004.



Rate per 100,000
 4.51 - 10.00 10.01 - 15.00 15.01 - 19.33 Excluded Data

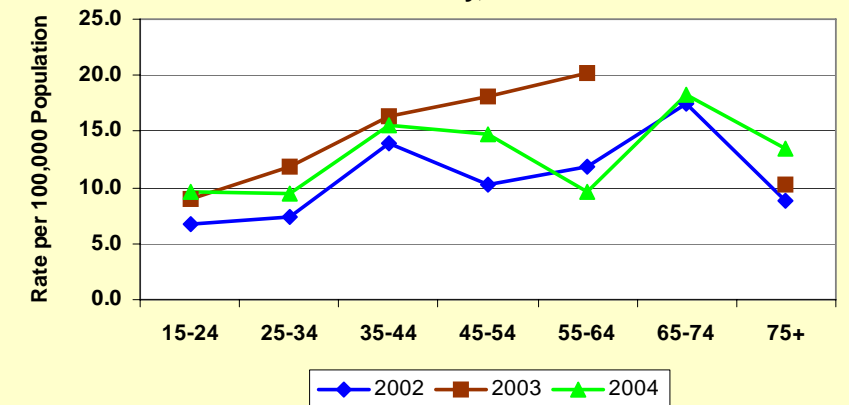
Total Number of Reported Adult Suicide Cases, Tarrant County, 2002-2004

Gender	n	%	Race/Ethnicity	n	%	Age	n	%
Male	288	76.0%	White	333	87.9%	25-34	72	19.0%
Female	89	23.5%	Black	19	5.0%	35-44	115	30.3%
			Hispanic	24	6.3%	45-54	91	24.0%
			Other	3	0.8%	55-64	53	14.0%
						65-74	29	7.7%
						75+	19	5.0%
Total	379							

Total Number of Youth and Young Adult Suicide Cases, Tarrant County, 2002-2004

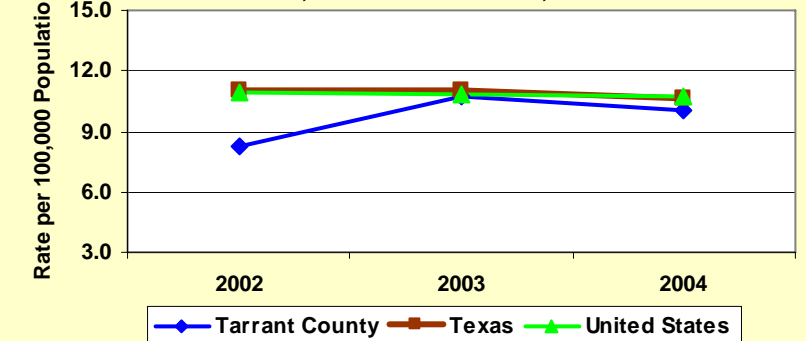
Gender	n	%	Race/Ethnicity	n	%	Age	n	%
Male	45	76.3%	White	43	72.9%	15-24	57	96.6%
Female	14	23.7%	Black	4	6.8%			
			Hispanic	10	16.9%			
Total	59							

Incidence Rate of Suicide by Age, Tarrant County, 2002-2004



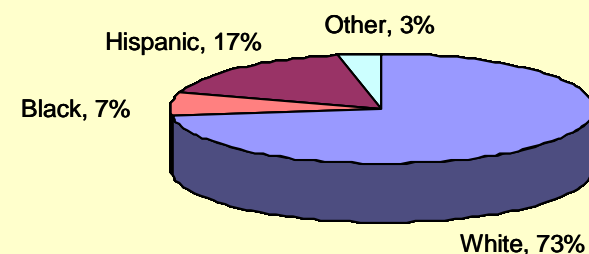
The number of cases in the 65-74 year age group is too small for rate calculation.

Suicide Rates in Tarrant County, Texas, and United States, 2002-2004

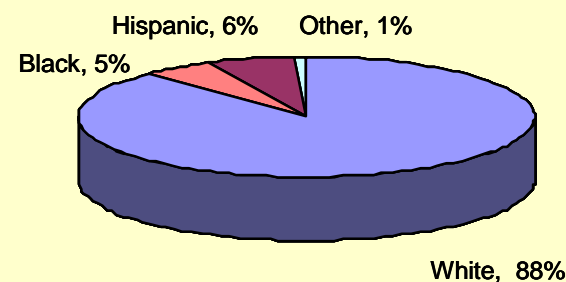


Suicide by Ethnicity, 2002-2004

Youth and Young Adults

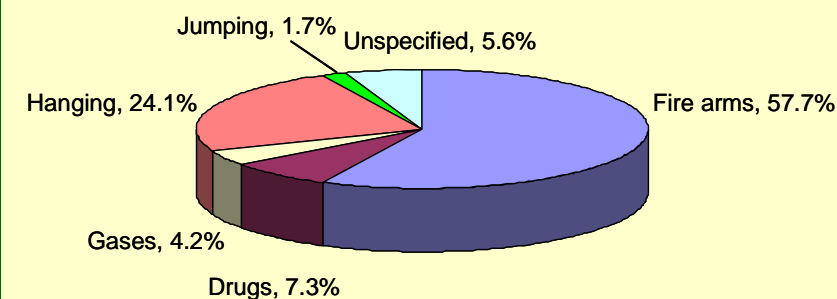


Adults

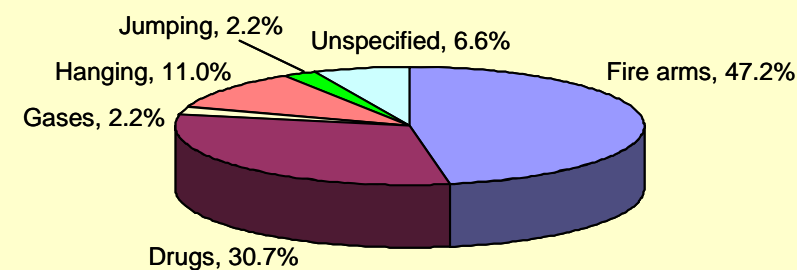


Modes of Suicide, Adults, 2002-2004

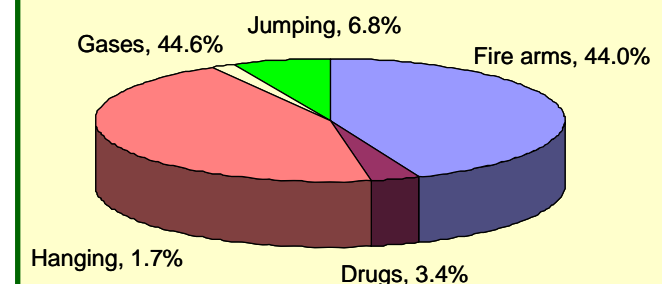
Male



Female



Modes of Suicide, Youth and Young Adults, 2002-2004



Tarrant County Public Health

Director: Lou K. Brewer
RN, MPH



For more information:
Epidemiology & Health Information

Phone
817.321.5350
Fax
817.321.5353

<http://health.tarrantcounty.com>

Emergency Contact
24hr Contact 817.994.3708