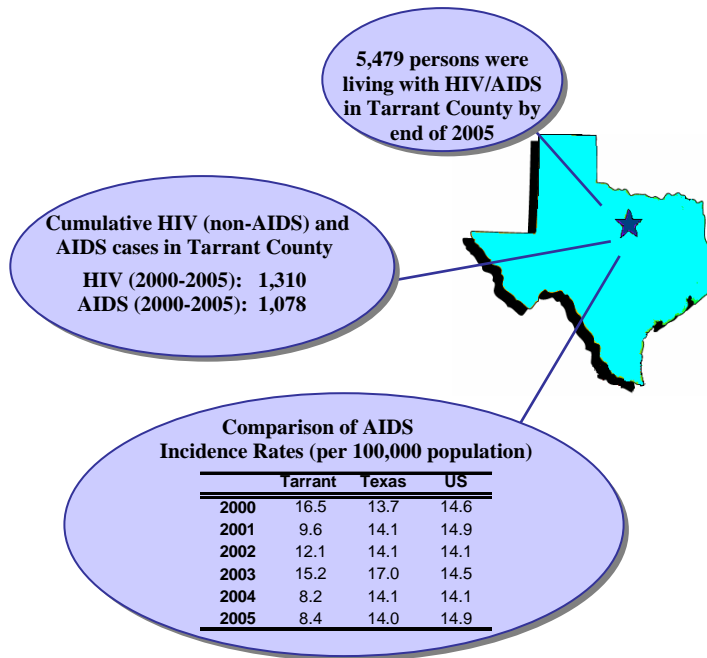


HIV & AIDS IN TARRANT COUNTY 2005

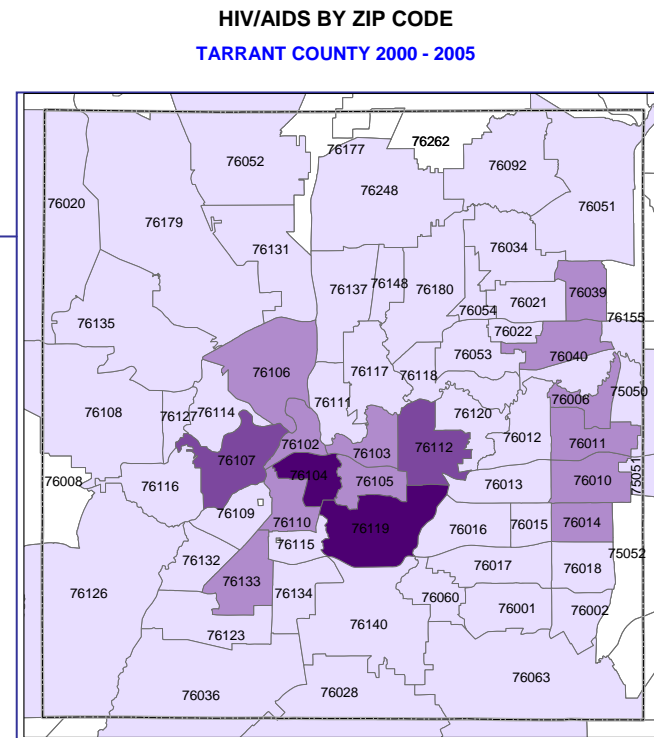
Total Number and Rate of HIV and AIDS 2005

	HIV		AIDS	
	Cases	Rate ¹	Cases	Rate ¹
Total	243	15.1	134	8.4
Gender				
Male	177	22.2	106	13.3
Female	66	8.2	28	3.5
Race/ethnicity				
White	93	10.3	51	5.6
Black	91	42.3	53	24.6
Hispanic	46	11.7	29	7.4
Age of Diagnosis (in years)				
15 to 24	43	18.6	10	4.3
25 to 34	75	29.1	30	11.6
35 to 44	73	29.0	48	19
45 to 54	39	17.8	30	13.7
55 to 64	8	5.7	11	7.9
65+	3	@	5	3.8

1. Rate: Incidence rate per 100,000 population
2. @ Numerator too small for rate calculation
3. 0-14 not included due to small numbers



HIV name reporting was started in 1999
 Cumulative Incidence Rate (per 100,000 population)
 Numbers represent cases entered in HIV/AIDS Registry System during the specified period



Map Legend

- No Data
- < 37 cases
- 37 - 72 cases
- 73 - 108 cases
- > 109 cases



Tarrant County Public Health
 Director: Lou K. Brewer
 RN, MPH



For more information:
 Epidemiology & Health Information

Phone
 817.321.5350

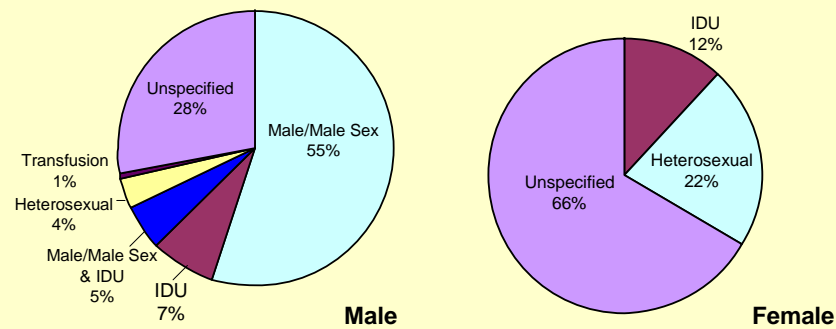
Fax
 817.321.5353

<http://health.tarrantcounty.com>

Emergency Contact
 24hr Pager 817.418.1065
 24hr Cell 817.994.3708

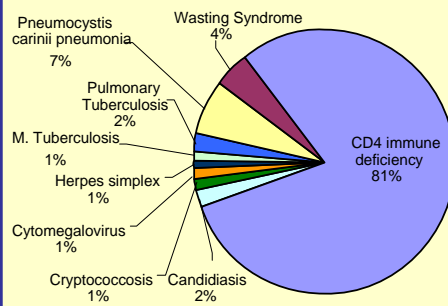
04/2007

HIV & AIDS Cases by Modes of Transmission 2005



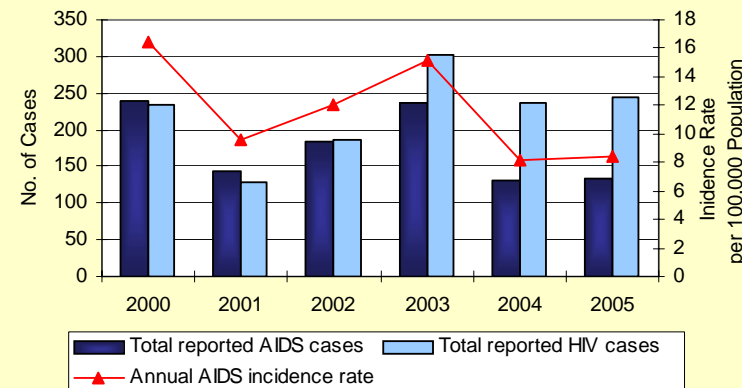
IDU= Intravenous Drug Use

Major Manifested Diseases of AIDS Patients 2005

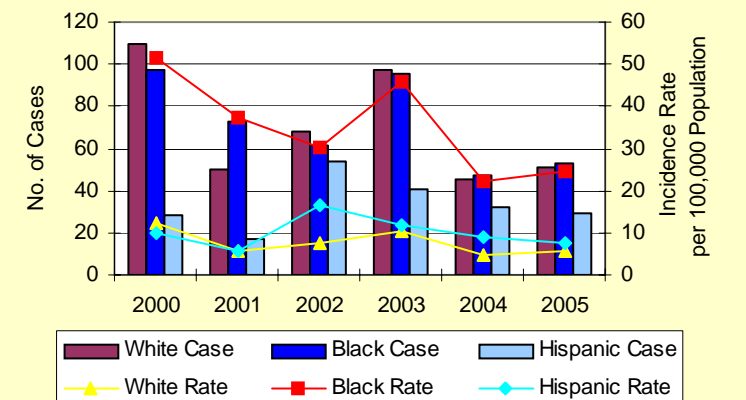


Patients may have multiple manifestations

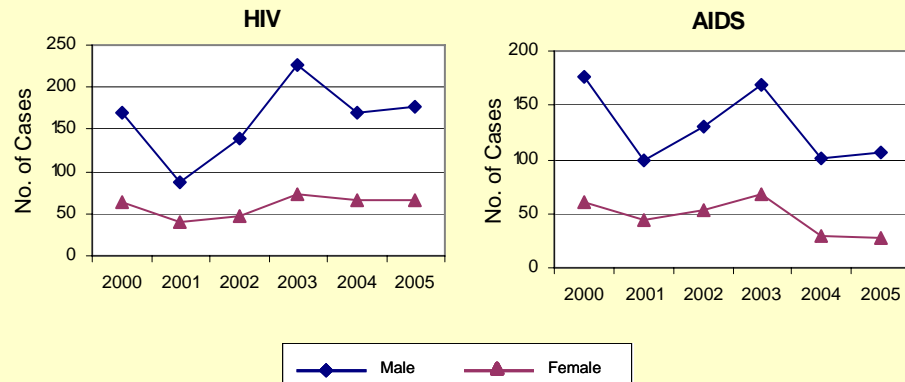
HIV & AIDS Cases in Tarrant County 2000-2005



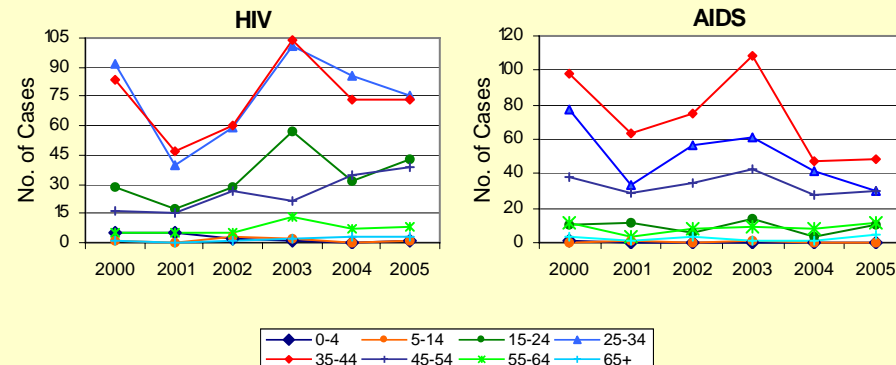
AIDS Cases by Race/Ethnicity 2000-2005



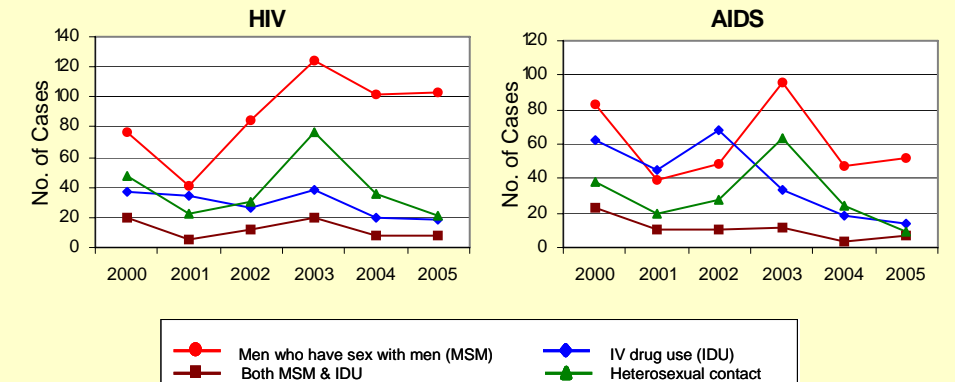
HIV & AIDS Cases by Gender 2000-2005



HIV & AIDS Cases by Age 2000-2005



HIV & AIDS Cases by Mode of Transmission 2000-2005



* Data Source: Tarrant County Public Health, Texas Department of State Health Services