

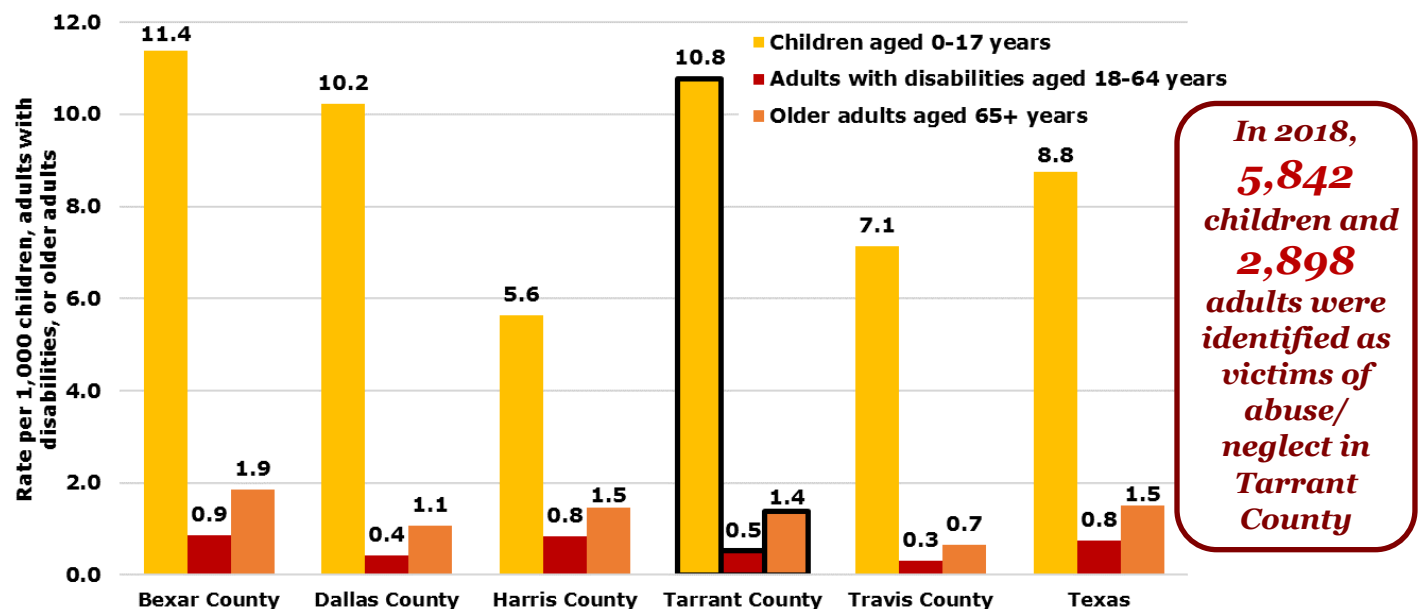
TARRANT COUNTY PUBLIC HEALTH DATA BRIEF



ABUSE AND NEGLECT IN TARRANT COUNTY

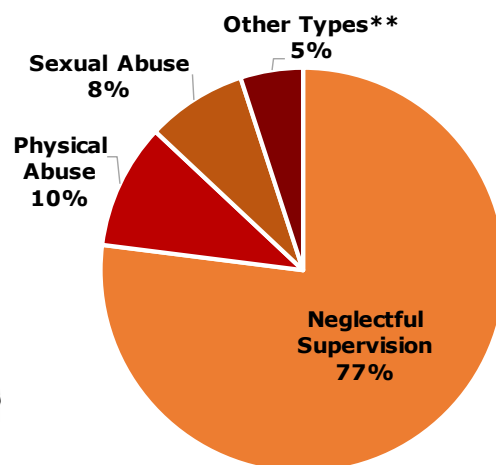
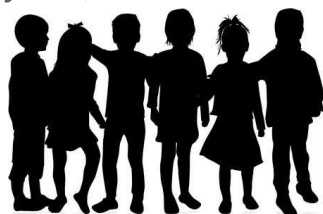
Abuse and Neglect – an act or a failure to act that leads to harm or increases the risk of harm. **Forms of Abuse** – physical, sexual, emotional/psychological, and exploitation (including financial abuse among adults). **Forms of Neglect** – failure to protect from harm, address medical needs, and provide basic needs of living (food, water, shelter, hygiene, clothing, supervision, etc.) excluding financial reasons. *NOTE: Abuse/neglect of adults with disabilities and older adults is underrepresented due to a lack of standardized definitions, reporting processes, data, and training/awareness.*

Figure 1. Rates of confirmed/validated victims of abuse/neglect by age group and location, 2018 †

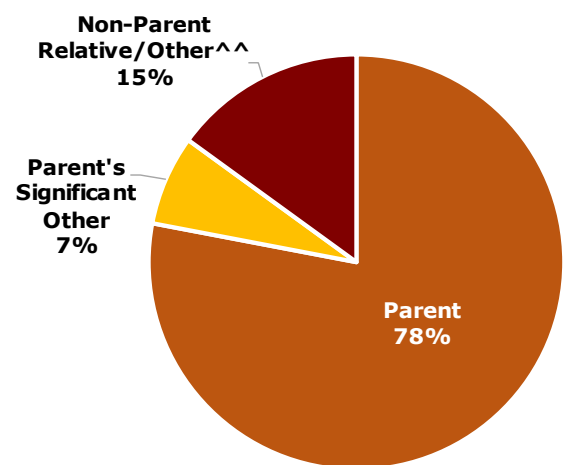


† Victims have been unduplicated by investigation stage. Texas Adult Protective Services (TX APS) definitions: **Disability**- a mental, physical, or developmental disability that substantially impairs the ability to live independently or provide for their own self-care or protection. **Confirmed Victim (child)**- a victim in a completed investigation who is a victim on at least one allegation with a disposition of reason to believe. **Validated Victim (adult)**- based on the standard of preponderance of the evidence, it is more likely than not that the maltreatment occurred.

Figure 2. Forms of abuse/neglect and perpetrator types among confirmed Tarrant County child victims aged 0-17 years, 2018

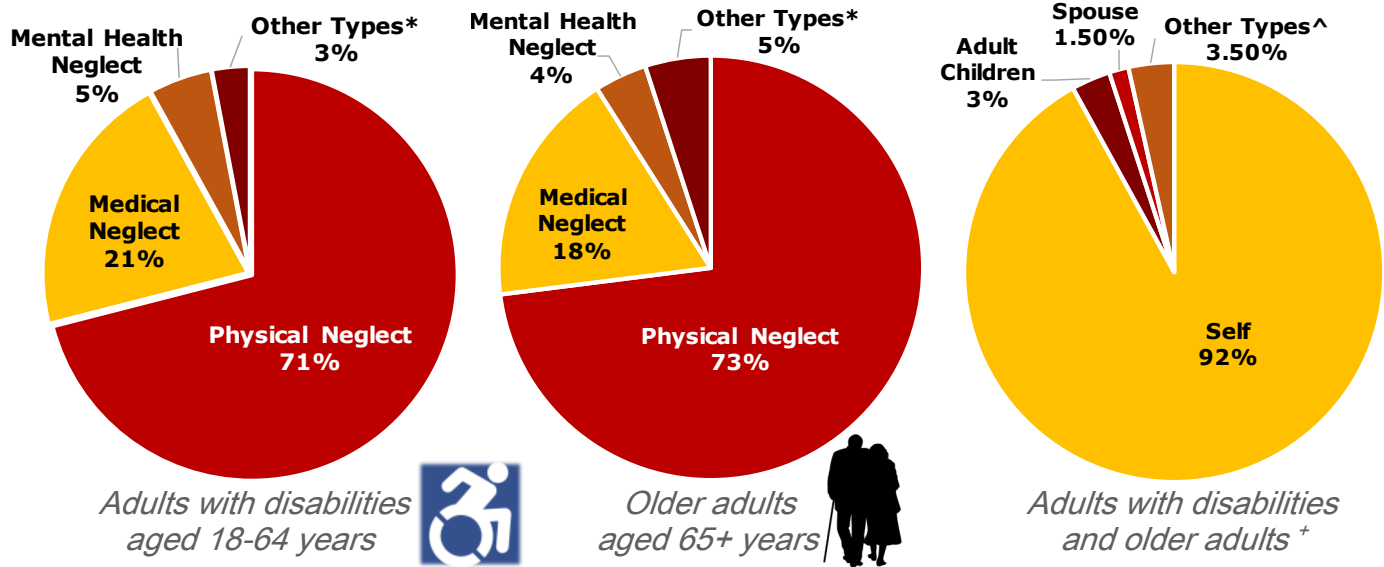


** abandonment, emotional abuse, medical neglect, physical neglect, refusal to accept parental responsibility, and sex trafficking



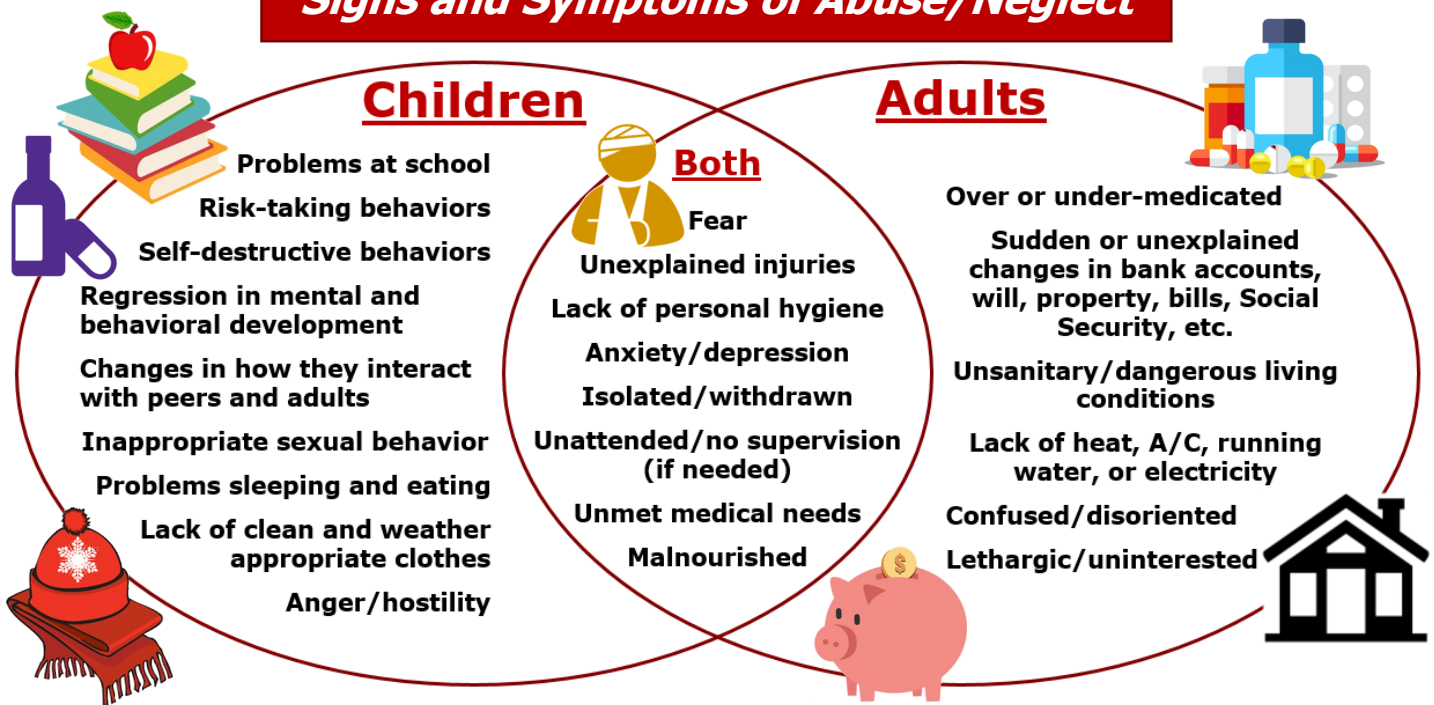
^^ i.e. sibling, aunt/uncle, grandparent, etc.

Figure 3. Forms of abuse/neglect and perpetrator types among validated Tarrant County adult victims aged 18+ years, 2018



* emotional/verbal abuse, exploitation, physical abuse, and sexual abuse; ^ facility-institutional staff, friend-neighbor, grandchildren, no relationship, other, other relatives, parents, service provider, sibling, and unknown; + Adults with disabilities and older adults are combined due to data limitations

Signs and Symptoms of Abuse/Neglect



Education and Prevention

Child Abuse/Neglect

- allianceforchildren.org
- cookchildrens.org/health-resources/safety/Pages/maltreatment-prevention.aspx
- helpandhope.org
- playitsafe.org/index.php
- shakenbaby.org

Adult Abuse/Neglect

- www.endabusepwd.org
- everyonesbusiness.org
- fwscc.org/elder-abuse-prevention
- ncea.acl.gov
- tarrantcounty.com/en/criminal-district-attorney/criminal-division/ElderFraud.html

State/Local Resources and Support

Texas Abuse/Neglect Hotline:
Call 1-800-252-5400 TTY 1-800-735-2989
[txabusehotline.org]

Ageing & Disability Resource Centers
Call 1-855-937-2372
[tarrantcountyadrc.org]

MHMR of Tarrant County
Call 1-800-866-2465
TTY 817-569-4488
[mhmrarrant.org]

Tarrant County Elder Financial Fraud Unit
Call 817-884-1400

Financial Exploitation Prevention Center of Tarrant County
Call 817-720-6556