



*Tarrant County Public Health  
Division of Epidemiology and Health Information*

**Tarrant County Influenza Surveillance Weekly Report**  
**CDC Week 21: May 24 – May 30, 2009**

**Influenza Activity Code, County and State Levels <sup>1</sup>**

<b>Tarrant County: Week 21</b>	<b>Tarrant County: Week 20</b>	<b>Texas: Week 20</b>
Local	Local	Widespread

***Influenza Activity Summary***

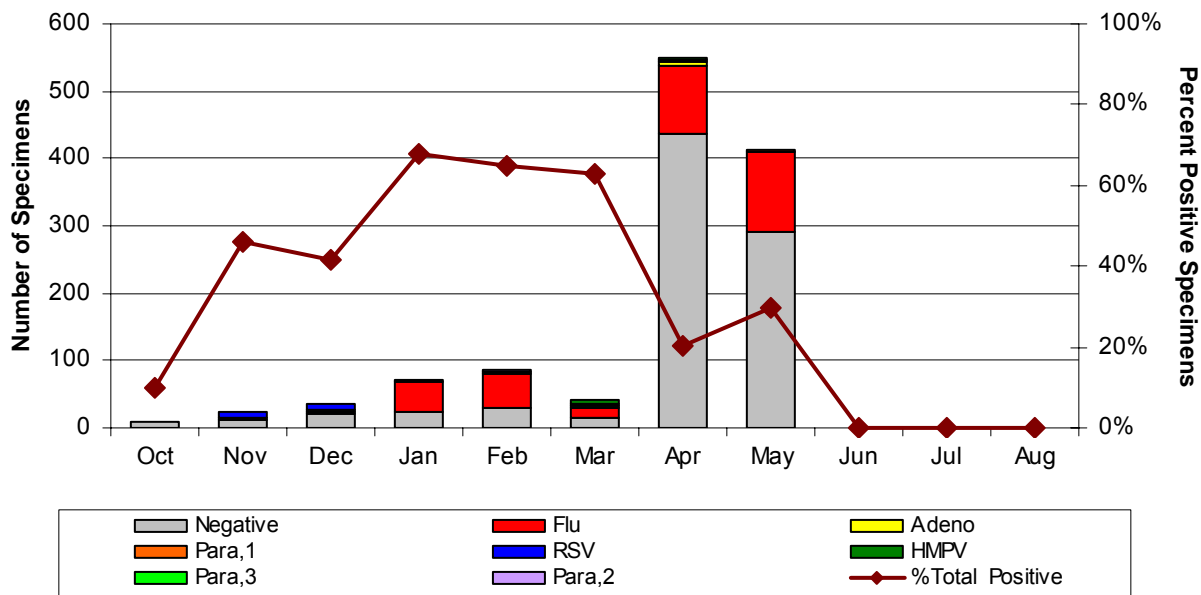
- The percentage of reported influenza like illness (ILI) in Tarrant County decreased from 4.51% in week 20 to 3.2% in week 21 and is currently below the 2008-2009 West South Central baseline (4.8%).<sup>2</sup>
- The percentage of flu screen positive tests increased from 1.4% in week 20 to 3.0% in week 21.
- During week 21, 33 specimens were tested for influenza and novel influenza A H1N1 was detected in 42% of these specimens. Influenza A H3, parainfluenza 1 and parainfluenza 3 viruses were also detected.
- At the national level, during week 20, influenza activity decreased in the United States, however there are still higher levels of influenza-like illness than is normal for this time of year. Four states reported geographically widespread influenza activity, 11 states reported regional activity, 13 states and the District of Columbia reported local influenza activity. One state reported no flu activity. The proportion of deaths attributed to pneumonia and influenza was below the epidemic threshold. Additional information regarding national activity may be accessed at <http://www.cdc.gov/flu/weekly/>.

<sup>1</sup> Additional information regarding Tarrant County and statewide activity codes can be accessed at [www.tarrantcounty.com/flu](http://www.tarrantcounty.com/flu) and [www.dshs.state.tx.us/idcu/disease/influenza/surveillance/](http://www.dshs.state.tx.us/idcu/disease/influenza/surveillance/)

<sup>2</sup> Regional ILI baselines are determined by the Centers for Disease Control and Prevention and can be accessed at <http://www.cdc.gov/flu/weekly/>

## Laboratory and Viral Isolation Information: Local and National Levels

### North Texas Regional Laboratory Real-Time PCR Result Summary



**Real-Time PCR viral detection, number of specimens (% positive):** Respiratory syncytial virus- 28 (7.5%), adenovirus- 12 (3.1%), parainfluenza virus 2- 1 (0.3%), parainfluenza virus 3- 5 (1.4%) and human metapneumovirus (HMPV)- 7 (1.9%). Of the specimens tested, co-infections have been detected in two specimens (A detection of influenza AH1 and adenovirus and a detection of influenza B virus and human parainfluenza-3). See Table 1 for influenza type and subtype information.

**Table 1. NREVSS Influenza Typing and Subtyping Results**

	Tarrant County*	U.S.#
<b>Number of Specimens Tested</b>	<b>1,231</b>	<b>6,469</b>
Positive Specimens	338 (27.5.0%)	1,450 (22.4%)
<b>Influenza A</b>	<b>292 (86.4%)</b>	<b>1,423 (98.1%)</b>
Influenza A H1	70 (24.0%)	24 (1.7%)
Influenza A H3	20 (6.8%)	70 (4.9%)
Novel Influenza A H1**	199 (68.2%)	1,096 (77.0%)
Influenza A, non-differentiated	3 (1.0%)	117 (8.2%)
<b>Influenza B</b>	<b>46 (14.2%)</b>	<b>27 (1.9%)</b>

\* Tarrant County NREVSS results based on real-time PCR analysis; information is cumulative for the 2008-2009 season.

# U.S. information for week 20 only. CDC is in the process of updating their existing surveillance systems due to the novel influenza A H1N1 strain.

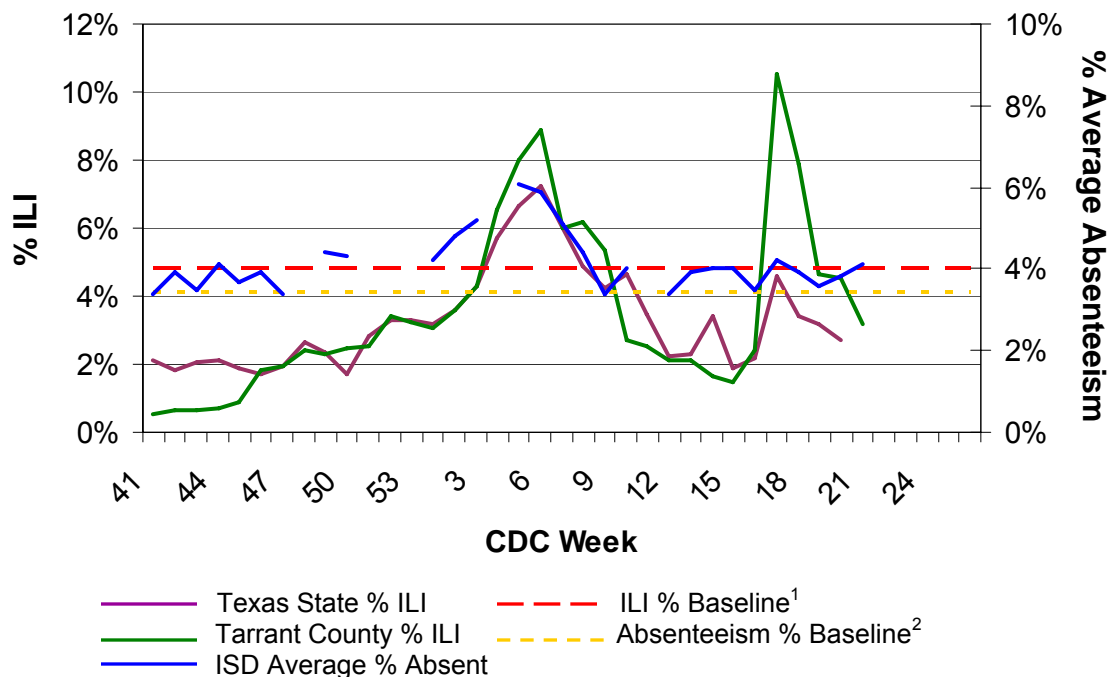
\*\* Novel Influenza A H1 figures include both presumptive and confirmed results.

**Table 2. Influenza Screening Test Results- Tarrant County**

CDC Week Number	19	20	21
# Influenza Tests Performed	704	416	267
% Influenza Positive	2.7%	1.4%	3.0%
# Influenza A Positive	14	6	8
% Influenza A Positive	73.7%	100%	100%
# Influenza B Positive	5	0	0
% Influenza B Positive	26.3%	0.0%	0.0%
# Non-differentiated Positive	0	0	0
% Non-differentiated Positive	0.0%	0.0%	0.0%

## Influenza Like Illness (ILI) and School Absenteeism

### 2008-2009 Influenza Like Illness (ILI) and Absenteeism, %



**Table 3. Weekly Influenza Like Illness (ILI) and Absenteeism, %**

CDC Week Number	19	20	21	Baseline
Texas State % ILI	4.51%	3.51%	NA	<b>4.8%<sup>1</sup></b>
Tarrant County, Total % ILI	4.75%	4.51%	3.16%	
SE Quadrant	6.9%	6.6%	5.5%	
SW Quadrant	4.2%	3.7%	2.3%	
NE Quadrant	3.5%	3.3%	2.5%	
NW Quadrant	2.7%	4.3%	1.9%	
School Average % Absent*	2.9%	3.8%	4.1%	<b>4.1%<sup>2</sup></b>

\* Week 21: Seven area school districts reporting.

**Table 4. Eight-Week Influenza Like Illness (ILI) Overview, Tarrant County and Texas**

CDC Week	# Reporting	Age 0-4	Age 5-24	Age 25-64	Age over 64	Total ILI	Total Patients	TC % ILI	Texas % ILI
2009-14	28	82	49	70	13	214	13174	1.62%	3.43%
2009-15	26	71	50	53	13	187	12915	1.45%	1.91%
2009-16	27	144	108	83	17	352	14516	2.42%	2.19%
2009-17	28	466	852	795	77	2190	20785	10.54%	4.58%
2009-18	30	321	459	520	50	1350	17133	7.88%	3.44%
2009-19	31	213	223	218	39	633	14591	4.75%	4.51%
2009-20	25	168	205	194	28	595	13183	4.51%	3.51%
2009-21	26	119	124	130	16	389	12295	3.16%	—

<sup>1</sup> Regional ILI baselines are determined by the Centers for Disease Control and Prevention and can be accessed at <http://www.cdc.gov/flu/weekly/>

<sup>2</sup> Absenteeism baseline is the average weekly absenteeism experienced during April-May during the 2006-2007 and 2007-2008 school years. Some data points excluded due to holidays and inclement weather.

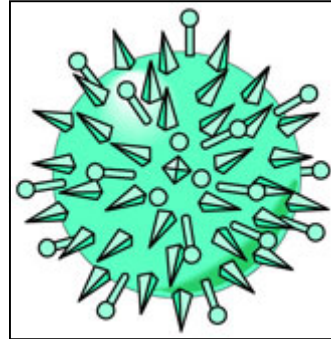
*The Tarrant County Influenza Surveillance Weekly Report* is available on the Tarrant County Public Health web site at: [www.tarrantcounty.com/Flu](http://www.tarrantcounty.com/Flu)

**If you have questions or comments regarding influenza surveillance, please contact:**

Diana Cervantes, MS, MPH  
*Epidemiologist*  
dcervantes@tarrantcounty.com

**Tarrant County Public Health  
Influenza Surveillance  
Epidemiology and Health Information**

**1101 S. Main St., Suite 2200 Fort Worth, TX  
76104**



Lou K. Brewer, RN, MPH  
*Director, Tarrant County Public Health*

**NOTE:**

Influenza-like Illness (ILI) is defined as fever (temperature  $\geq 100^{\circ}\text{F}$ ) plus a cough OR a sore throat, in the absence of a known cause other than influenza.

Tarrant County reporting quadrants consist of Northwest, Northeast, Southwest and Southeast regions within the boundaries of Interstate 35 and Interstate 30.

Tarrant County ILI activity is assessed using information provided by surveillance participants and the Electronic Surveillance System for the Early Notification of Community-based Epidemics (ESSENCE). ILI variations between quadrants may be due to the number of facilities reporting within each quadrant.

**Questions regarding a reportable disease or condition? Please contact the Epidemiology and Health Information Division:**

- Main office number : (817) 321-5350
- 24-hour contact number: (817) 994-3708