

Tarrant County
Juvenile Services
2011 Annual Report

Table of Contents

Tarrant County Juvenile Board Members	1
Tarrant County Juvenile Services: Vision, Mission & Core Values	2
Overview of Tarrant County Juvenile Services.....	3
Tarrant County Juvenile Services Continuum of Services	4
Tarrant County Juvenile Services: Administration	5
Tarrant County Juvenile Services: Residential	6
Tarrant County Juvenile Services: Educational Services	7
Tarrant County Juvenile Services: Probation Services	8
Overview	9
Court Services	10
Referrals to Tarrant County Juvenile Services	11
Formal Referrals to Tarrant County Juvenile Services	11
Formalized Referral Trends 2007 to 2011	13
Referral Trends 2000 to 2011	14
Referral Demographic Information.....	15
Drug Offenses: 2002-2011	16
Drug Testing	16
Supervision Average Daily Population	17
Average Caseload by Unit	17
Demographics of Youth Placed on Court-Ordered Probation	17
Demographics of Youth Placed on Deferred Prosecution Probation	19
Specialized Caseloads	21
Community Service & Restitution Project	21
Victim's Assistance Unit	22
Community Programs	23
Lynn W. Ross Juvenile Detention Center	24
Demographics of Admitted Youth	24
Juvenile Justice Alternative Education Program	26
Tarrant County Juvenile Services Source of Funds: Fiscal Year 2011	29

Tarrant County Juvenile Board Members

Honorable Nancy Berger - 322nd District Court
Honorable Wade Birdwell - 342nd District Court
Honorable Jean Boyd - 323rd District Court - Tarrant County Juvenile Judge
Honorable Robb Catalano - Criminal District Court No. 3
Honorable Randy Catterton - 231st District Court
Honorable John Chupp - 141st District Court
Honorable Don Cosby - 67th District Court
Honorable Ken Curry - 153rd District Court
Honorable David Evans - 48th District Court
Honorable George Gallagher - 396th District Court
Honorable Ruben Gonzalez, Jr. - 432nd District Court
Honorable William Harris - 233rd District Court
Honorable Jerome Hennigan - 324th District Court
Honorable Tom Lowe III - 236th District Court
Honorable Wayne Salvant - Criminal District Court No. 2
Honorable Michael Sinha - 360th District Court
Honorable Louis E. Sturns - 213th District Court
Honorable Bonnie Sudderth - 352nd District Court
Honorable Mike Thomas - Criminal District Court No. 4
Honorable R.H. Wallace - 96th District Court
Honorable Judith Wells – 325th District Court
Honorable Mollee Westfall - 371st District Court
Honorable Glen Whitley - Tarrant County Judge
Honorable Melody Wilkinson - 17th District Court
Honorable Sharen Wilson - Criminal District Court No. 1
Honorable Scott Wisch - 372nd District Court
Honorable Dana Womack - 348th District Court – Juvenile Board Chairman
Honorable Everett Young - 297th District Court

Tarrant County Juvenile Services: Vision, Mission & Core Values

TARRANT COUNTY JUVENILE SERVICES

Vision

A safe and healthy quality of life for our communities

Mission

To operate a justice organization that supports victim rights and community safety while fostering productive, responsible behavior for youth and families.

Core Values

A

APPLICATION OF RESTORATIVE JUSTICE: We provide fair and responsive treatment for victims of juvenile crime in a manner that affirms victims experience while addressing offender rehabilitation

S

SERVICE TO THE COURT: We serve the Court and execute its orders in a partnership involving the youth, family, probation officer, victim, and community;

P

PARTNERSHIPS: We partner with families, communities, and organizations to seek solutions to juvenile crime;

I

INDIVIDUAL STRENGTH-FOCUSED APPROACH: We implement probation strategies which support a youth's successful functioning in the community as well as personal accountability for injury caused; assist youth to recognize their value and identify personal strengths through interventions which build assets and increase capabilities; and help families support their children in overcoming barriers to growth and responsible behavior;

R

RESPECT: We act with sensitivity to racial, ethnic, cultural, familial, and offense diversity; provide services in a professional and ethical manner; and demonstrate appreciation and respect for all employees, recognizing that our mission is more important than role distinctions;

E

EXCELLENCE: We strive for excellence in service delivery by implementing evidence-based practices that are creative, flexible, innovative, technologically refined, and measured.

Overview of Tarrant County Juvenile Services



Services are provided to juveniles under the authority of the Tarrant County Juvenile Board, which has designated the 323rd State District Court to serve as the Juvenile Court. The current presiding judge of the Juvenile Court is Judge Jean Boyd. Three associate judges assist Judge Boyd: Judge Tim Menikos, Judge Ellen Smith and Judge Kim Brown.

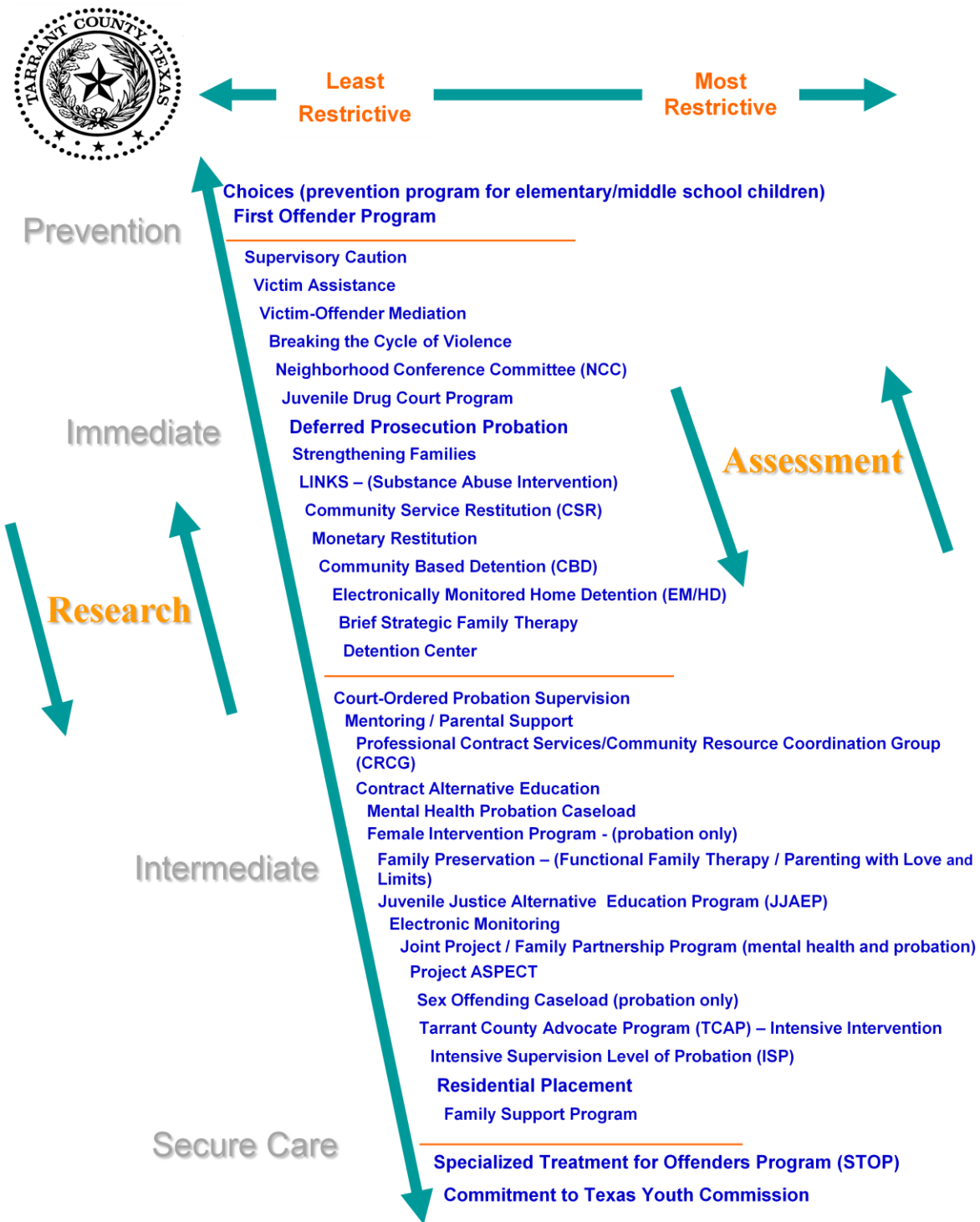
By statute, Tarrant County Juvenile Services is the agency designated to receive law enforcement reports of law violations defined either as delinquent conduct or conduct indicating a need for supervision allegedly committed by juveniles (children ages 10 through 16).

Delinquent conduct includes Class A & B misdemeanors as well as felony-grade offenses. Conduct indicating a need for supervision includes Class C misdemeanors transferred from a justice or municipal court and include public intoxication, truancy, running away, inhalant abuse, and violation of school disciplinary codes that result in expulsion.

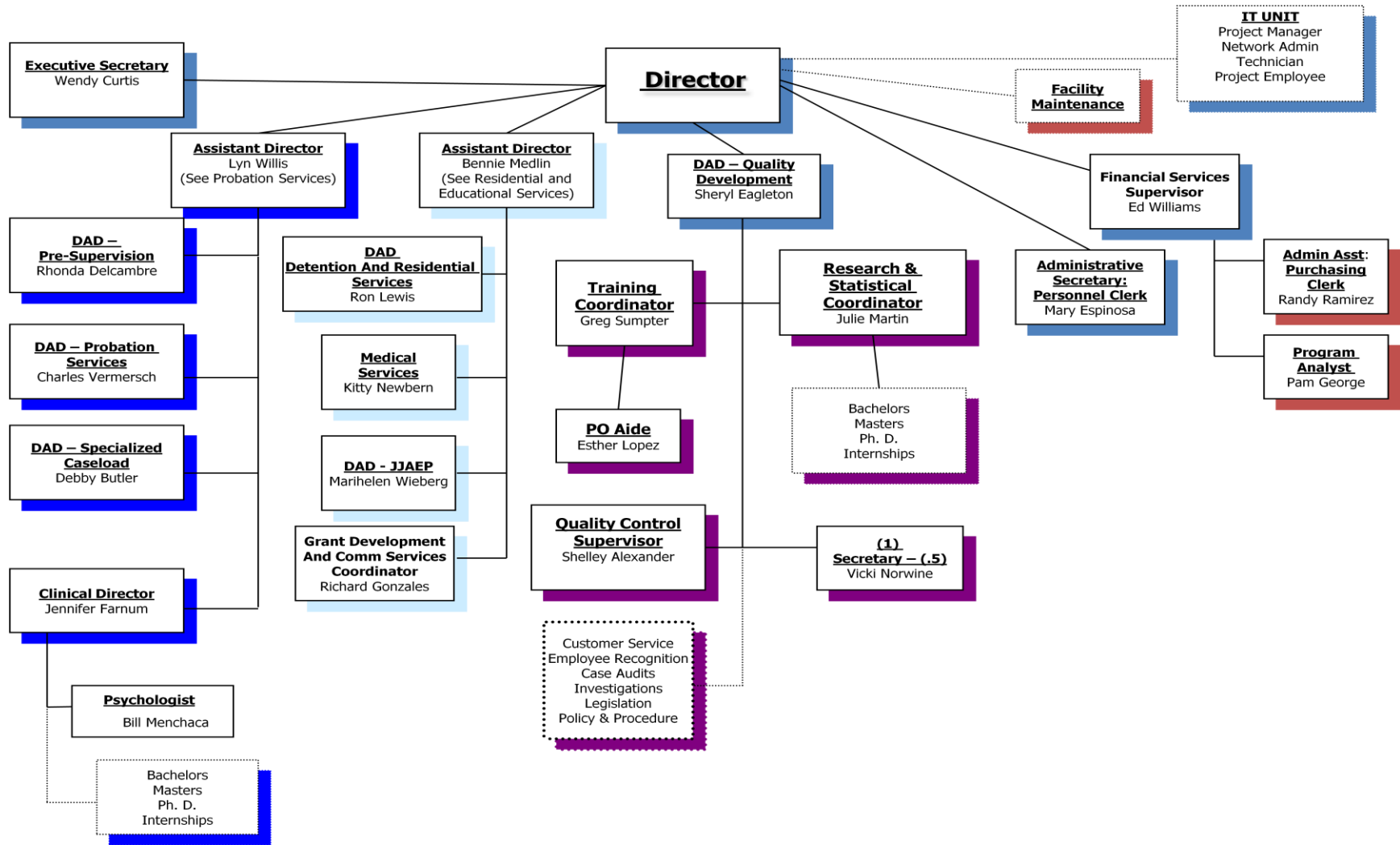
Services performed include screening and diversion of cases to community resources, presenting objective reports to the court for use at disposition, executing court-ordered treatment and supervision, administering community corrections programs, securing alternative placement and administering collection of court-ordered probation fees and Tarrant County Juvenile Services has developed programs and operations with the goal of diverting youth from the juvenile justice system at the earliest appropriate point. The Juvenile Court endorses this belief by striving to identify the least restrictive environment for the care and rehabilitation of children while assuring community safety. To this end, Tarrant County Juvenile Services has developed a range of community and home-based programs as additional options in solving the problem of juvenile crime. Juvenile Services has the ability to offer a diverse continuum of services to youth and families of Tarrant County.

Tarrant County Juvenile Services operates the Juvenile Detention Center, which is a twenty-four hour secure facility for the temporary detention of juveniles for serious law violations. The goal of the center is to provide supervision, activities and counseling that will benefit each child during his stay. Services provided include educational, medical, recreational and life skills training as well as daily written observations of each child for use by the court.

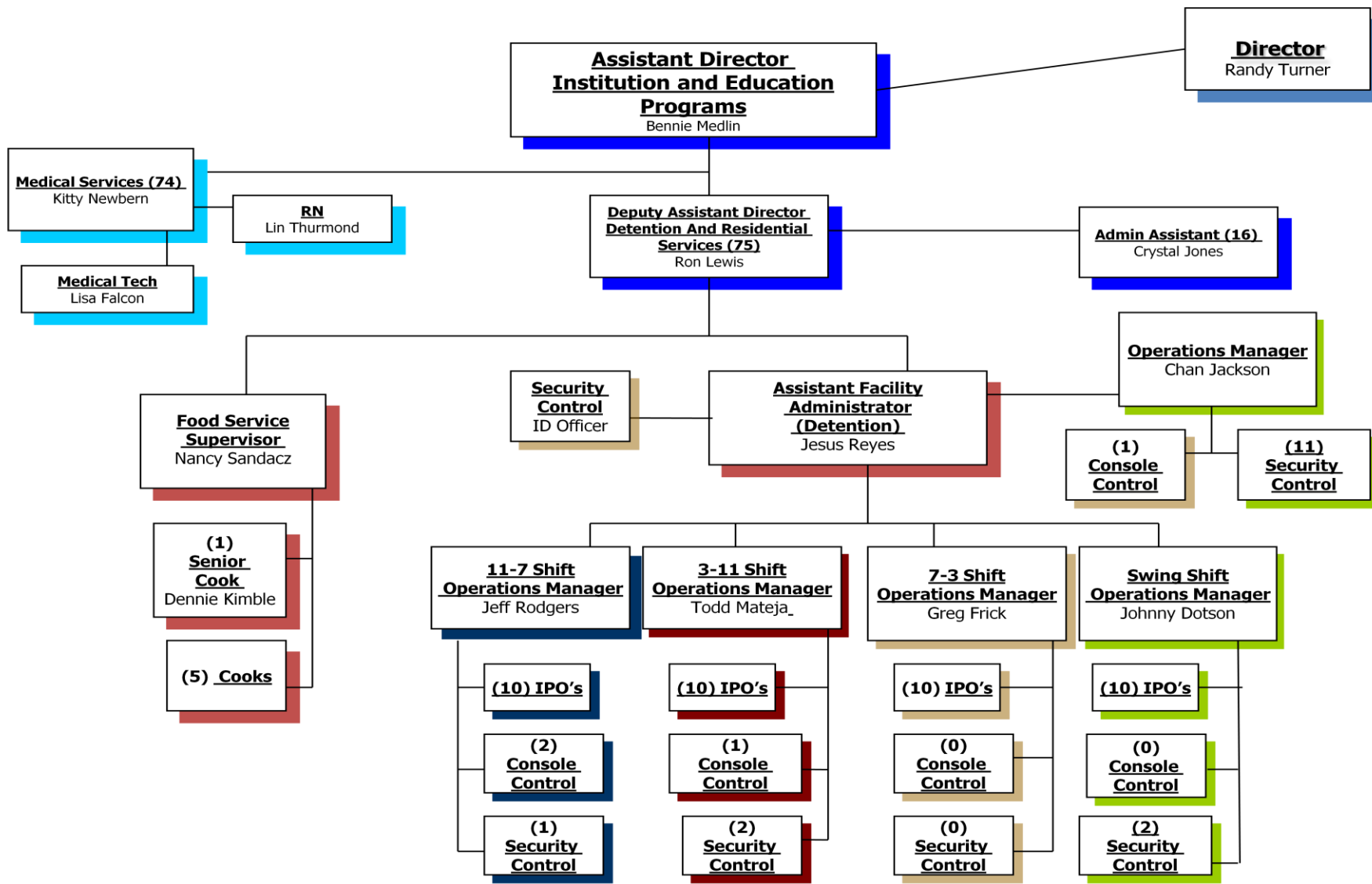
Tarrant County Juvenile Services Continuum of Services



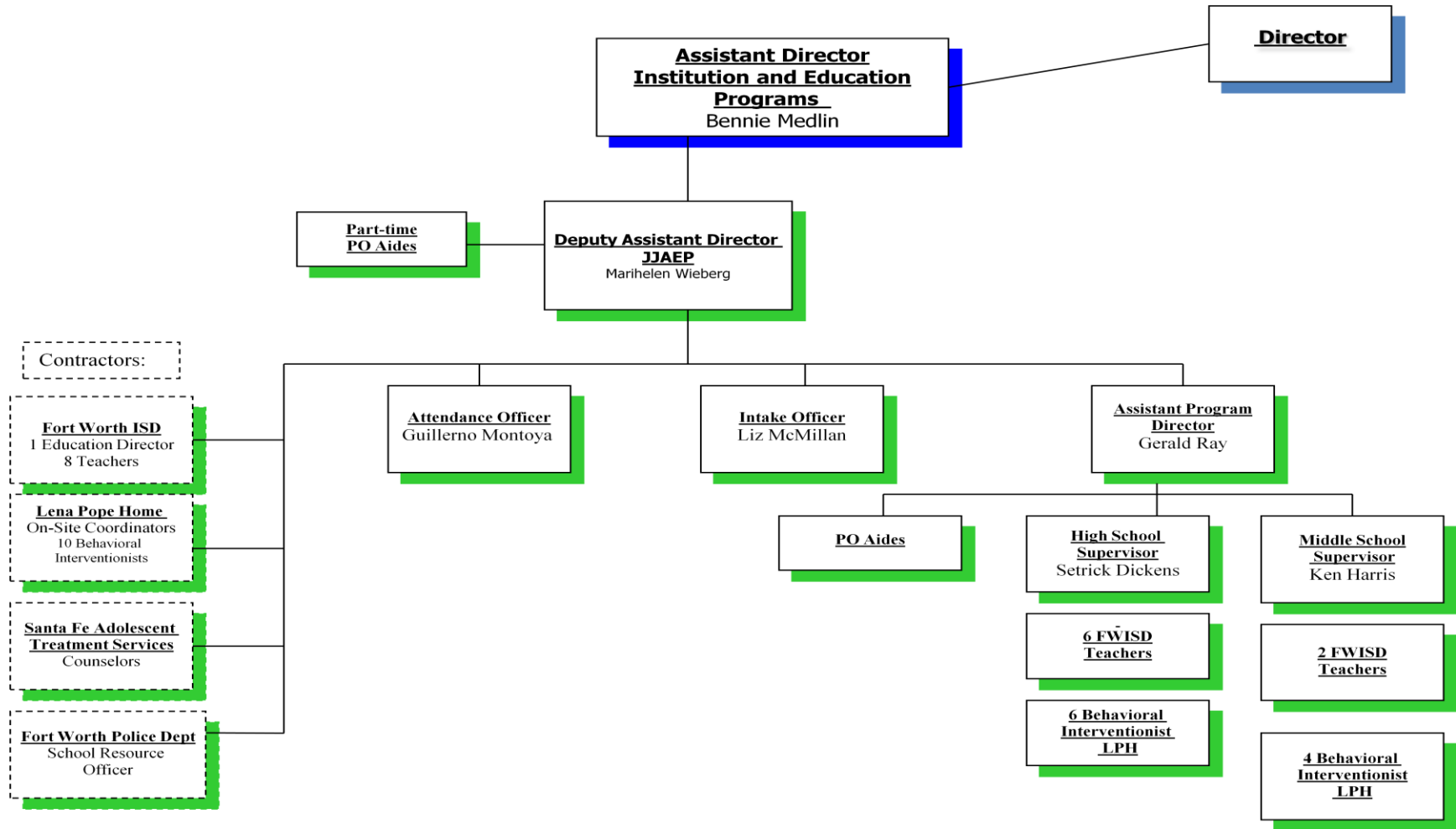
Tarrant County Juvenile Services: Administration



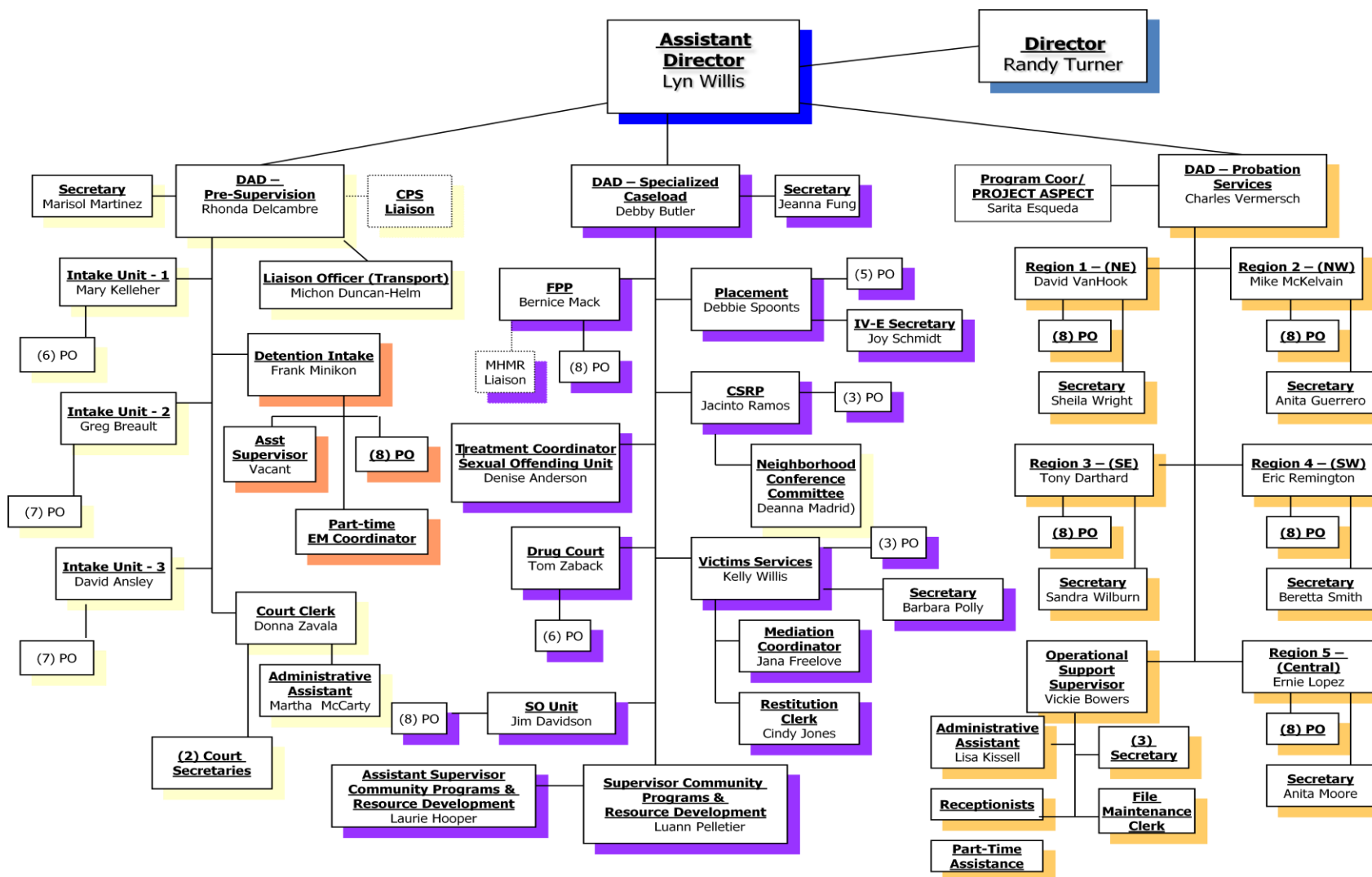
Tarrant County Juvenile Services: Residential



Tarrant County Juvenile Services: Educational Services



Tarrant County Juvenile Services: Probation Services



Overview

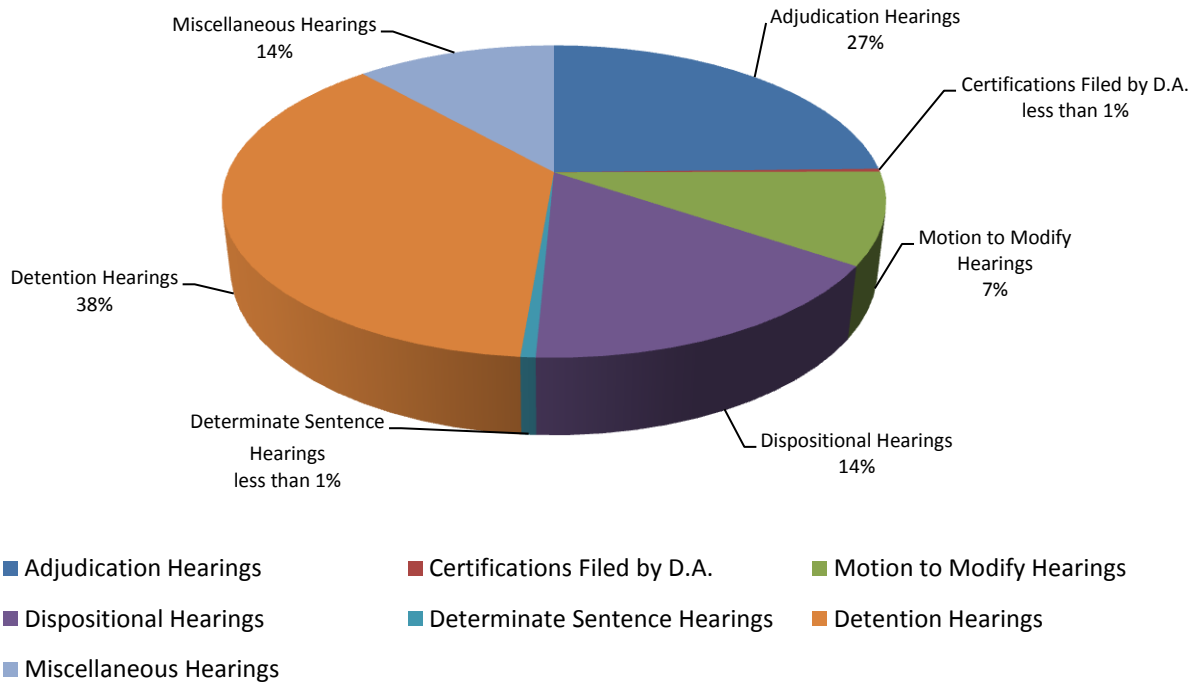
Total Number of Formal Referrals	4182
Total Number of Children Referred	3049
Referral Rate per 1,000 Juvenile Population Aged 10-16 (170,485) ¹	24.5
Total Number of Adjudications	1072
Percent of Referrals resulting in an Adjudication	25.6%
Total Number of Adjudicated Youth	776
Total Number of Referrals Court-Ordered Probation Dispositions	805
Total Number of Youth Placed on Court-Ordered Probation	704
Probation Rate per 100 Adjudications	75.1
Percent of Referrals resulting in Court-Ordered Probation	19.3%
Total Number of Deferred Prosecution Probation Dispositions	592
Total Number of Youth Placed on Deferred Prosecution Probation	580
Percent of Referrals placed on Deferred Prosecution Probation	14.2%
Total Number of Modifications	204
Percent of Referrals resulting in Modification	4.9%
Total Number of Texas Youth Commission Commitments	80
Total Number of Certifications	5

¹ Population projection based on 0.5 migration scenario as provided by the Texas State Demographer.

Court Services

ADJUDICATION HEARINGS CONVENED:	1361
DISPOSITIONAL HEARINGS:	901
MOTION TO MODIFY HEARINGS:	525
OTHER HEARINGS:	
Detention Hearings	2046
Determinate Sentencing Hearings	34
Granted (28)	
Certifications filed by D.A.	17
Granted (5)	
Miscellaneous Hearings	644
Total Hearings	5528

Court Hearings by Type: 2011



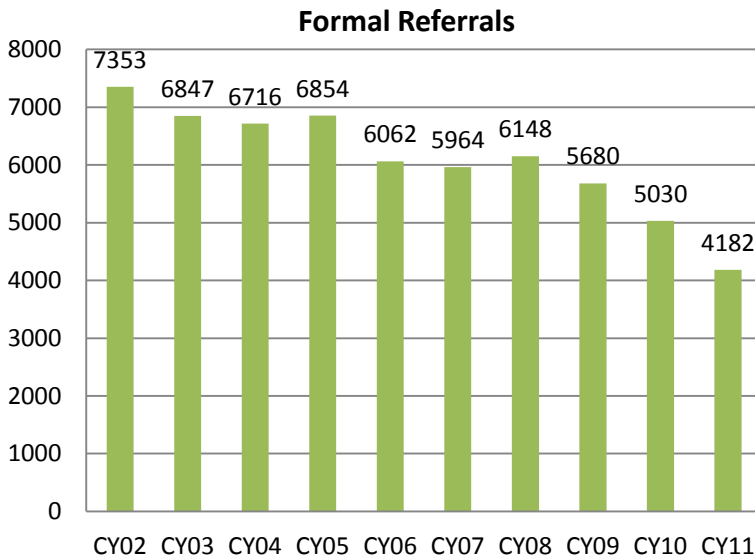
Referrals to Tarrant County Juvenile Services

A referral occurs when a youth is brought to the department’s attention for alleged delinquent behavior (including both felony and misdemeanor referrals), violation of probation, or conduct indicating a need for supervision (CINS offense).

Referral Type	Frequency	Percentage
Formal Referrals		
Formalized	2839	67.9%
Paper Formalized	1343	32.1%
Total Formal Referrals	4182	100.0%
Other Referrals		
Interim/Interstate	188	
Contract Detention	39	
Other Administrative	174	
Paper Referrals Disposed as Paper	347	

Formal Referrals to Tarrant County Juvenile Services

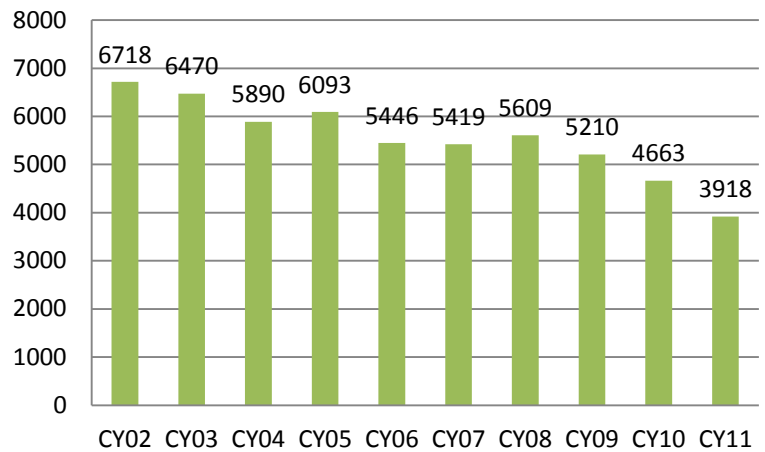
A referral is considered a formal referral when a face-to-face contact occurs between the youth and this department. The following figures reflect the total number of referrals and referral trends from 2002 through 2011.



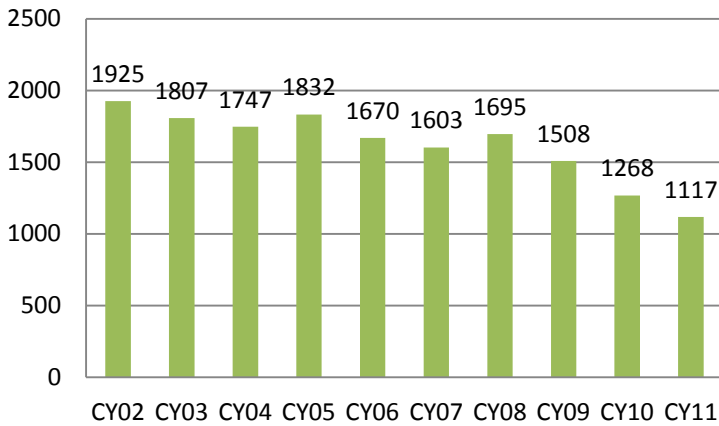
- The total number of formal referrals decreased by 38.9% from 2002 to 2011.
- In the last five years (2007-2011), the total number of formal referrals decreased by 29.9%.
- From 2010 to 2011, the total number of formal referrals decreased by 16.9%.

- Delinquent Referrals include all referrals for felonies, class A & B misdemeanors and violations of probation.
- The total number of delinquent referrals decreased by 41.7% from 2002 to 2011.
- In the last five years (2007-2011), the total number of delinquent referrals decreased by 27.7%.
- From 2010 to 2011, the total number of delinquent referrals decreased by 16.0%.

Total Delinquent Referrals



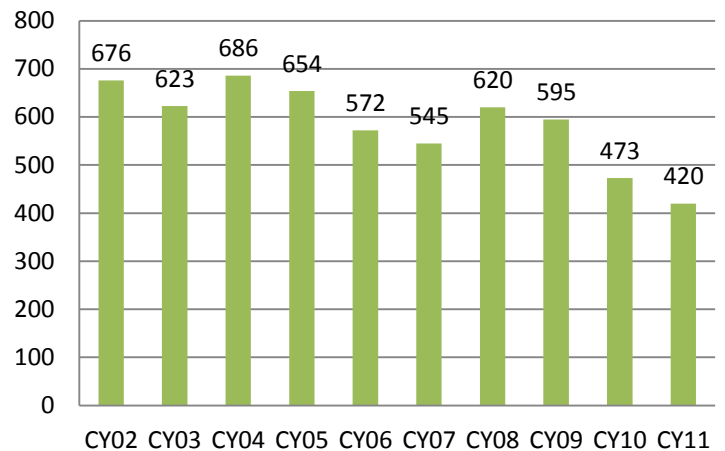
Felony Referrals



- The total number of felony referrals decreased by 42.0% from 2002 to 2011.
- In the last five years (2007-2011), the total number of felony referrals decreased by 30.3%.
- From 2010 to 2011, the total number of felony referrals decreased by 11.9%.

- Violent felony referrals include the following offense categories: homicide, attempted homicide, sexual assault, robbery, aggravated assault.
- The total number of violent felony referrals decreased by 37.9% from 2002 to 2011.
- In the last five years (2007-2011) the total number of violent referrals has decreased by 22.9%.
- From 2010 to 2011, the total number of violent referrals has decreased by 11.2%.

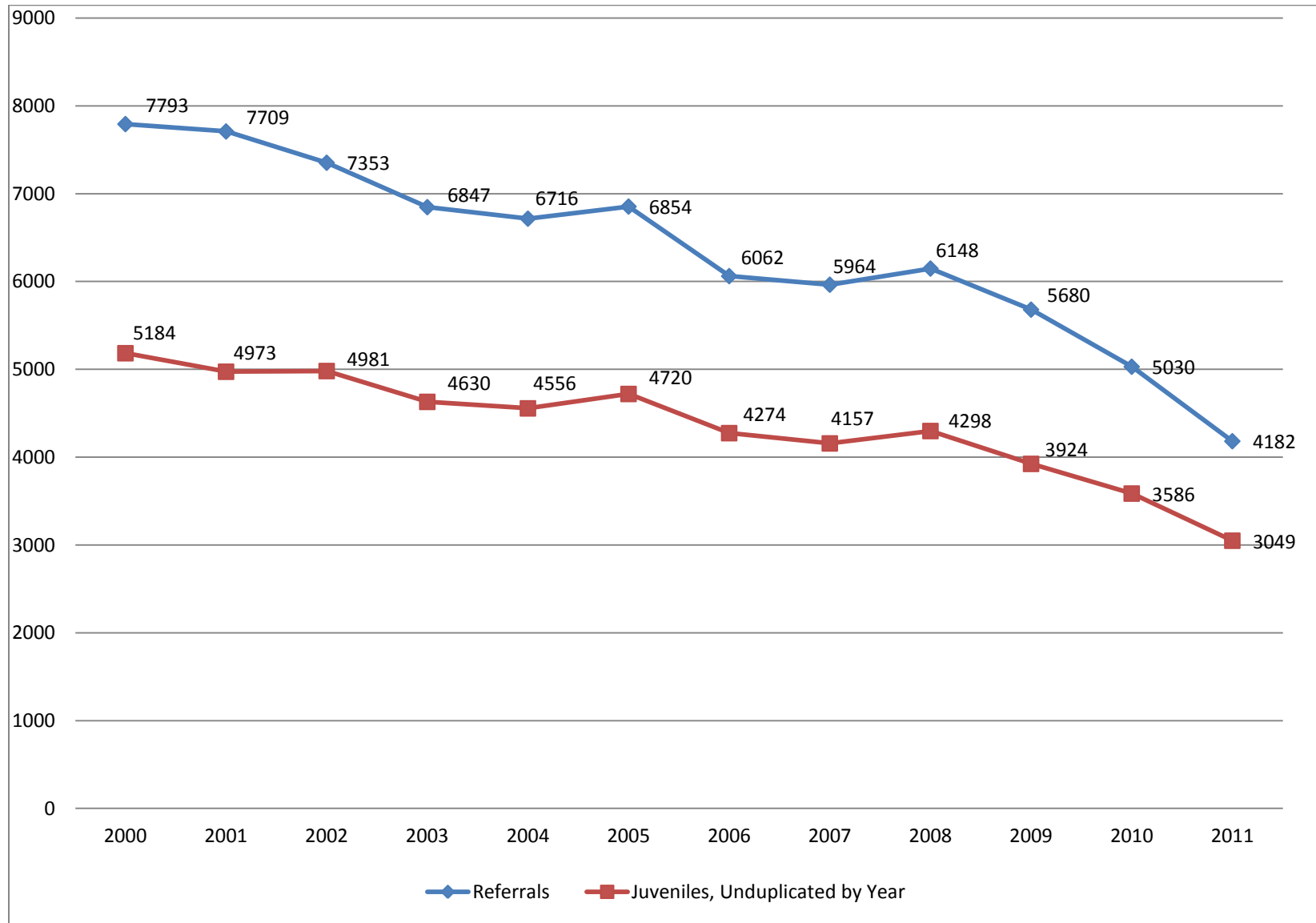
Violent Felony Referrals



Formalized Referral Trends 2007 to 2011

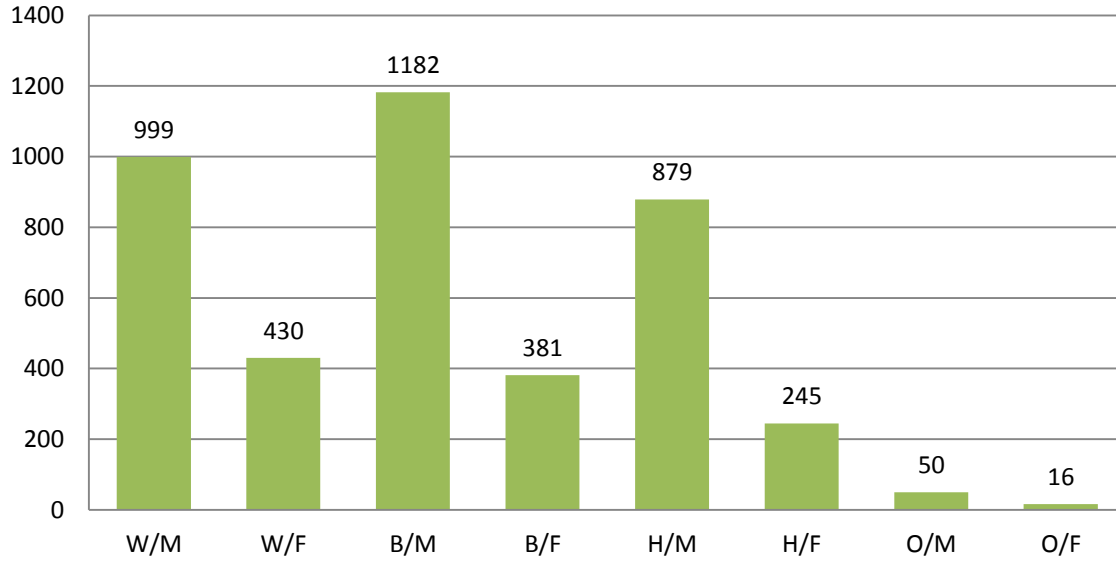
Felonies	2007	2008	2009	2010	2011	# Change 2010-2011	% Change 2010-2011
<u>Violent Referrals</u>							
Homicide	3	10	6	4	9	5	> 100% (+)
Attempted Homicide	3	1	1	1	0	-1	100% (-)
Sexual Assault, related	111	139	123	91	82	-9	11% (-)
Robbery	86	153	141	101	68	-33	33% (-)
Aggravated Assault	342	317	324	276	261	-15	5% (-)
Total Violent Referrals	545	620	595	473	420	-53	11% (-)
<u>Non-Violent Referrals</u>							
Burglary	407	459	369	335	312	-23	7% (-)
Theft	123	106	87	66	65	-1	2% (-)
Motor Vehicle Theft/UJMV	61	53	52	40	36	-4	10% (-)
Drug Offenses	117	113	114	135	118	-17	13%(-)
Weapons Violations	93	77	48	50	34	-16	32%(-)
Other Felony	257	257	243	169	132	-37	22%(-)
Total Non-Violent Referrals	1058	1065	913	795	697	-98	12%(-)
Total Felonies	1603	1685	1508	1268	1117	-151	12%(-)
<u>Class A & B Misdemeanors</u>							
Weapons Violations	45	37	39	51	26	-25	49%(-)
Assault	710	825	705	667	610	-57	9%(-)
Theft	830	1044	1026	892	620	-272	30%(-)
Drug Offenses	583	452	539	567	480	-87	15%(-)
Other Misdemeanor	1217	1194	985	856	655	-201	23.5%(-)
Contempt of Court	5	6	7	19	13	-6	32%(-)
Total Class A & B Misdemeanors	3390	3558	3301	3052	2404	-648	21%(-)
Total Violation of Probation	426	366	401	343	397	54	16%(+)
Total Delinquent Conduct Referrals	5419	5609	5210	4663	3918	-745	16%(-)
<u>CINS Referrals</u>							
Truancy	0	5	7	10	0	-10	100% (-)
Runaway	420	362	300	231	209	-22	10% (-)
Theft	18	30	10	0	0	0	-
Disorderly Conduct	2	2	2	1	2	1	100% (+)
Inhalant Abuse	0	0	0	0	0	0	-
DUID	0	0	0	0	0	0	-
Liquor Laws	27	15	10	0	0	0	-
Expulsions	76	120	132	122	26	-96	79% (-)
Other	2	5	9	3	27	24	>100%(+)
Total CINS Referrals	545	539	470	367	264	-103	28% (-)
Total Referrals	5964	6148	5680	5030	4182	-848	17% (-)
Total Juveniles	4157	4298	3924	3586	3049	-537	15%(-)

Referral Trends 2000 to 2011



Referral Demographic Information

Referrals by Gender & Ethnicity

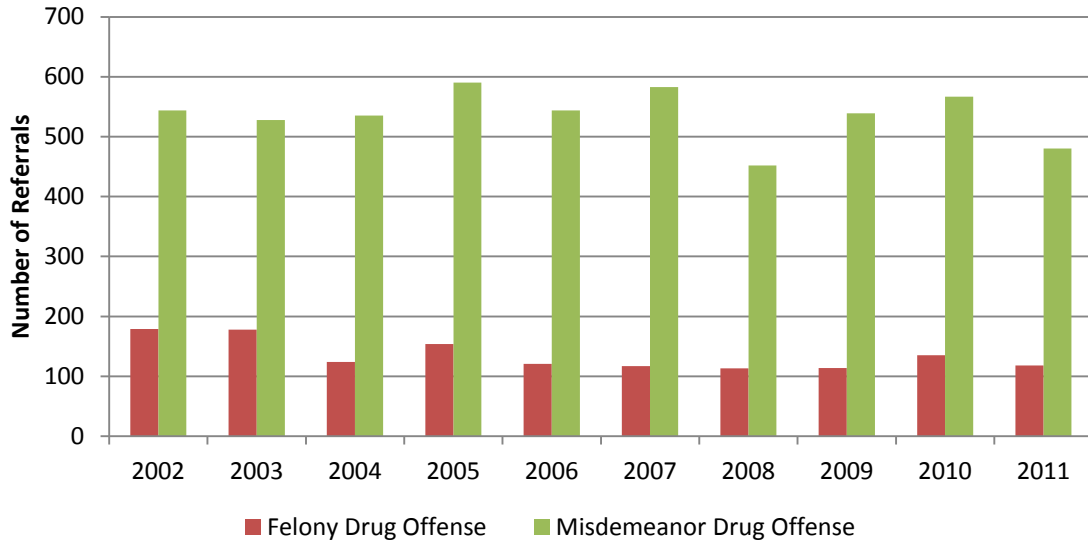


Demographic		Frequency	Percent
Gender			
Male		3110	74.8%
Female		1072	25.6%
Ethnicity			
Caucasian		1429	34.17%
African American		1563	37.37%
Hispanic		1124	26.88%
Other		66	1.58%

Referrals by Age

Age	Frequency	Percentage
10	26	0.6%
11	73	1.8%
12	178	4.3%
13	390	9.3%
14	799	19.1%
15	1137	27.2%
16	1419	33.9%
17+	160	3.8%

Drug Offenses: 2002-2011



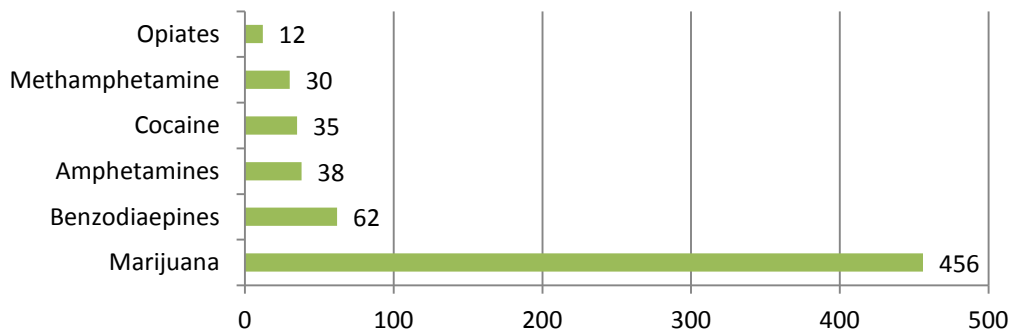
Offense Level	2002	2003	2004	2005	2006	2007	2008	2009	2010	2011
Felony	179	178	124	154	121	117	113	114	135	118
Misdemeanor	544	528	535	590	544	583	452	539	567	480
TOTAL	723	706	659	744	665	700	565	653	702	598

Drug Testing

In 2011, 1065 Probation/Detention drug tests were performed:

- Less than 1% were inconclusive (n=8)
- 53.0% were negative (n=564)
- 46.3% were positive (n=493)
 - 81.3% tested positive for one drug (n= 401)
 - 18.7% tested positive for more than one drug (n=92)

Frequency of Drugs Detected on Positive Drug Tests



Supervision Average Daily Population

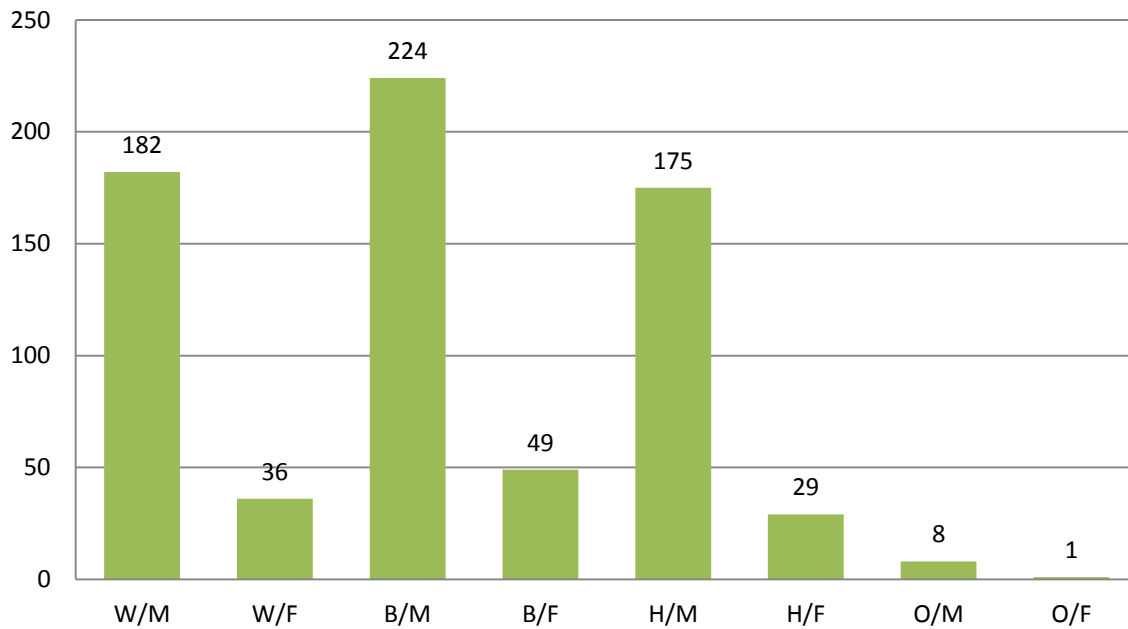
Supervision Type	ADP
All Supervisions	1084
Court-Ordered Probation	757
Deferred Prosecution Probation	267
Judgment Withheld	61

Average Caseload by Unit

Unit	Average Caseload
Traditional Probation	21.1
Placement	10.6
Family Partnership Program (FPP)-SNDP	13.1
FPP-Specialized	12.6
Sex Offending	9.9
Drug Court	16.5

Demographics of Youth Placed on Court-Ordered Probation

Juveniles Placed on Court-Ordered Probation by Gender & Ethnicity



Juveniles Placed on Court-Ordered Probation by Gender & Ethnicity

Demographic	Frequency	Percent
Gender		
Male	589	83.7%
Female	115	16.3%
Ethnicity		
Caucasian	218	31.0%
African American	273	38.8%
Hispanic	204	29.0%
Other	9	1.2%

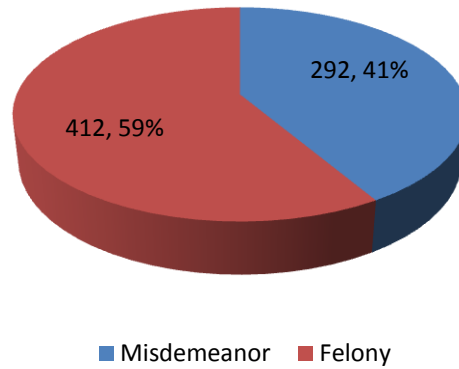
Age of Juveniles Placed on Court-Ordered Probation

Age	Frequency	Percentage
10	3	0.4%
11	6	0.9%
12	20	2.8%
13	47	6.7%
14	124	17.6%
15	174	24.7%
16	268	38.1%
17+	62	8.8%
Average Age at Disposition = 15 years		

Offense Category of Juveniles Placed on Court-Ordered Probation

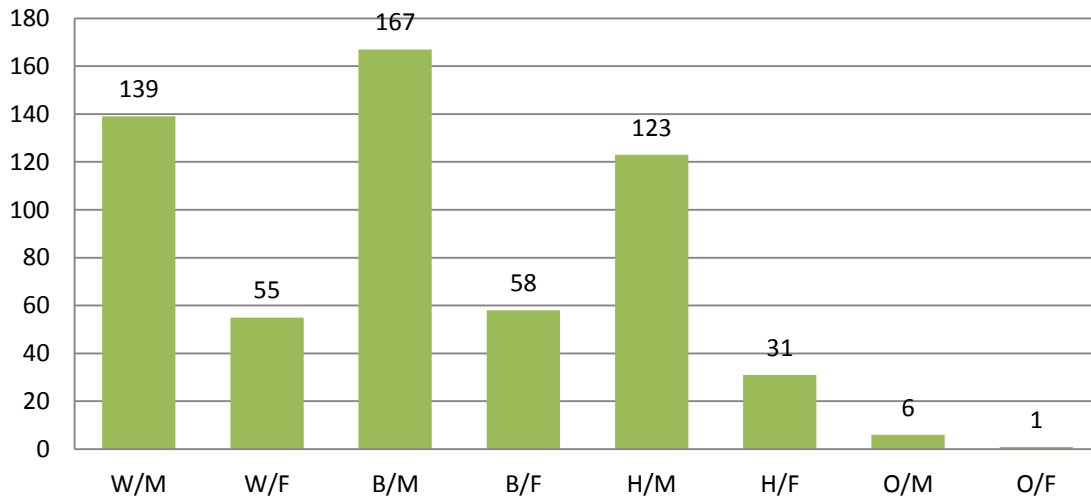
Offense Level	Offense Type	Count	Percentage
FELONY	Violent Against Person	182	25.8%
	Against Person	8	1.1%
	Property	155	22.0%
	Drug	35	5.0%
	Weapon	9	1.3%
	Public Order/Administration	23	3.3%
MISDEMEANOR	Against Person	88	12.5%
	Property	88	12.5%
	Drug	63	8.9%
	Weapon	9	1.3%
	Public Order/Administration	44	6.3%

Juveniles Placed on Court-Ordered Probation by Offense Level



Demographics of Youth Placed on Deferred Prosecution Probation

Juveniles Placed on Deferred Prosecution Probation by Gender & Ethnicity



Demographic	Frequency	Percent
Gender		
Male	435	75.0%
Female	145	25.0%
Ethnicity		
Caucasian	194	33.4%
African American	225	38.8%
Hispanic	154	26.6%
Other	7	1.2%

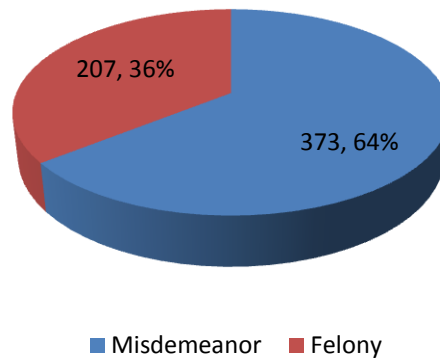
Age of Juveniles Placed on Deferred Prosecution Probation

Age	Frequency	Percentage
10	5	0.9%
11	13	2.2%
12	31	5.3%
13	71	12.2%
14	102	17.6%
15	172	29.7%
16	160	27.6%
17+	26	4.5%
Average Age at Disposition = 14.5 years		

Offense Category of Juveniles Placed on Deferred Prosecution Probation

Offense Level	Offense Type	Count	Percentage
FELONY	Violent Against Person	66	11.4%
	Against Person	2	0.3%
	Property	99	17.1%
	Drug	16	2.8%
	Weapon	12	2.1%
	Public Order/Administration	12	2.1%
MISDEMEANOR	Against Person	137	23.6%
	Property	130	22.4%
	Drug	51	8.8%
	Weapon	2	0.3%
	Public Order/Administration	53	9.1%

Juveniles Placed on Deferred Prosecution Probation by Offense Level



Specialized Caseloads

Number Served & Completion Status

Specialized Unit	Number Served	Number of Completions	Other Completions	Successful Completions	Unsuccessful Completions
Specialized Treatment for Offenders Program (STOP)	11	8	0	5 (62.5%)	3 (37.5%)
Placement	136	86	0	66 (76.7%)	20 (23.3%)
Family Partnership Program (FPP)-SNDP	167	118	12	81 (76.4%)	25 (23.6%)
Family Partnership Program (FPP)-Specialized	106	71	0	60 (84.5%)	11 (15.5%)
Sex Offending	129	62	4	41 (70.7%)	17 (29.3%)
Drug Court	170	116	0	93 (80.2%)	23 (19.8%)

Community Service & Restitution Project

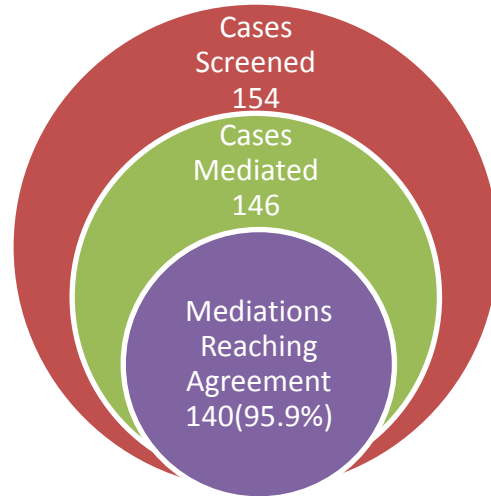
Total Number of Hours	11054
Number Served	601
Successful Completions	367
DPP	173
Court-Ordered	101
Drug Court	93
Unsuccessful Completions	93
DPP	50
Court-Ordered	35
Drug Court	8
Other Completions	1
Average Caseload	44.8

Victim's Assistance Unit

Victim Assistance Packets



Victim Offender Mediation Program



Restitution Project

Restitution/Fee Type	Total Active Cases during 2011	New Cases Added during 2011	Amount Paid
Voluntary Restitution	389	148	\$36,562.19
Court-Ordered Restitution	324	103	\$30,038.09
Court-Ordered Attorney Fees	197	30	\$2,153.09
Court-Ordered Probation Fees	771	211	\$15,981.74
Court-Ordered Court Fees	450	150	\$1,585.25
Court-Ordered Child Support	1	0	\$1,200.00
Deferred Prosecution Probation Fees	823	233	\$9,558.97
TOTAL	2955	875	\$97,079.33

Community Programs

Program	Number Served	Number of Completions	Other Completions*	Successful Completions	Unsuccessful Completions
Project ASPECT	133	125	10	81 (70.4%)	34 (29.6%)
Family Preservation (Functional Family Therapy)	197	160	16	96 (66.7%)	48 (33.3%)
Family Preservation** (Families in Transition)	54	35	1	25 (73.5%)	9 (26.5%)
TCAP (Court Transition)	84	75	0	70 (93.3%)	5 (6.7%)
TCAP (Intensive)	189	143	8	90 (66.7%)	45 (33.3%)
Cassata	38	28	1	21 (77.8%)	6 (22.2%)
Heart of a Champion	42	42	1	18 (43.9%)	23 (56.1%)
Neighborhood Conferencing Committee (NCC)	30	28	0	27 (96.4%)	1 (3.6%)
CATIE-REACH	23	5	1	2 (50.0%)	2 (50.0%)

*Youth who are discharged from programs for "other" reasons are not included in the number of completions or calculating percent of successful completions and percent of unsuccessful completions.

**Families in Transition began April 2011.

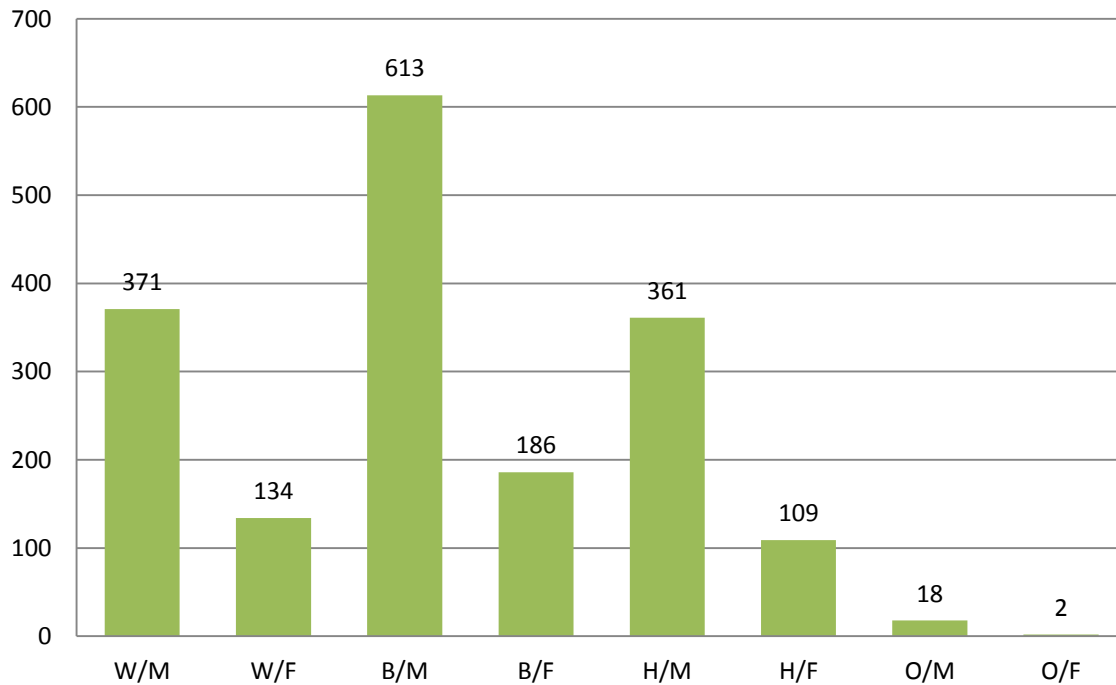
***CATIE-REACH began June 2011.

Lynn W. Ross Juvenile Detention Center

Number of Admissions	1794
Number of Individual Youth Admitted	1223
Child Care Days	21192
Average Daily Population	58.06
Average Length of Stay	12.10

Demographics of Admitted Youth

Detention Admissions by Gender & Ethnicity



Detention Admissions by Gender & Ethnicity

Demographic	Frequency	Percent
Gender		
Male	1363	76.0%
Female	431	24.0%
Ethnicity		
Caucasian	505	28.2%
African American	799	44.5%
Hispanic	470	26.2%
Other	20	1.1%

Detention Admissions by Age

Age	Frequency	Percentage
10	5	0.3%
11	24	1.3%
12	64	3.6%
13	136	7.6%
14	314	17.5%
15	481	26.8%
16	676	37.7%
17+	94	5.2%
Average Age at Admission = 15 years		

Detention Admissions by Reason Detained

Reason	Frequency	Percentage
Previously found Delinquent	729	40.6%
Inadequate Supervision	577	32.2%
Dangerous to Self/Others	330	18.4%
No Parent Guardian	92	5.1%
Likely to Abscond	37	2.1%
Court Order	20	1.1%
Pending Transport to TYC	4	0.2%
Pending Transport to Placement	3	0.2%
Alleged Delinquent Conduct	2	0.1%

Juvenile Justice Alternative Education Program

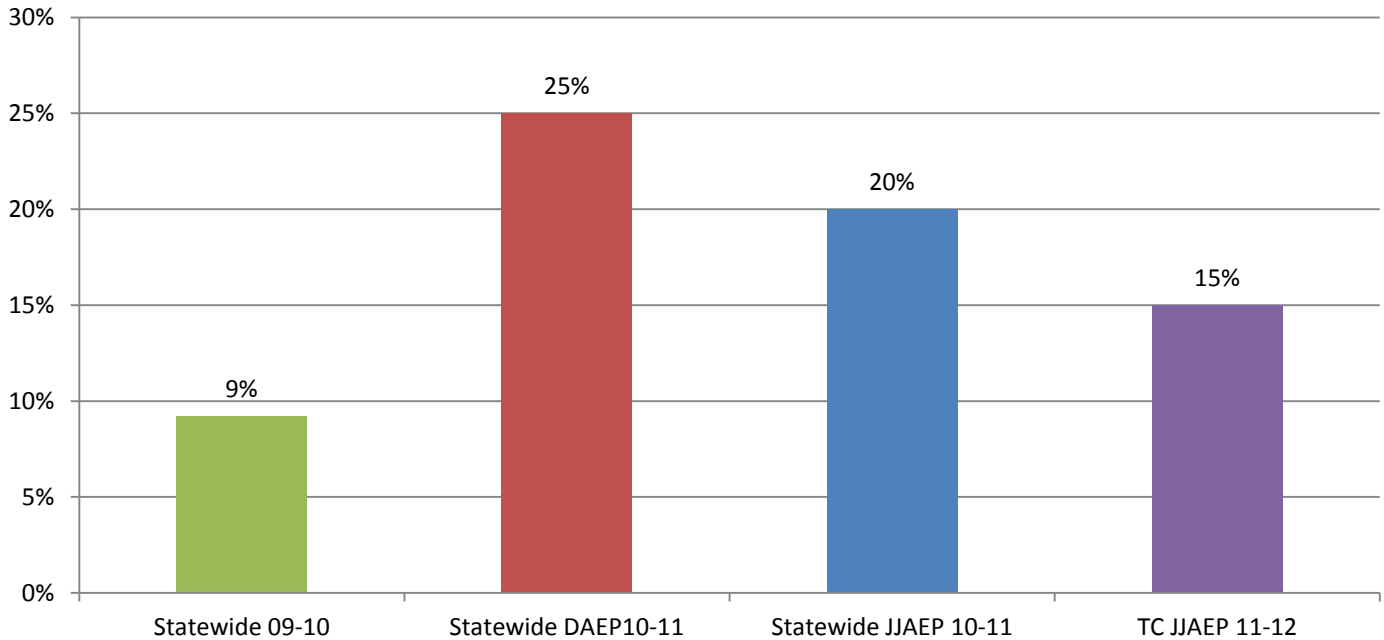
	2007/08					2008/09					2009/10					2010/11					2011/12				
New Referrals (Total Served)	N=283 (390)					N=262 (345)					N= 280 (383)					N=200 (322)					N=173 (254)				
Expulsion Offense																									
Juvenile Court Ordered						1 (<1%)										1 (<1%)									
Mandatory	146 (52%)					115 (44%)					151 (54%)					121 (61%)					100 (58%)				
Discretionary	137 (48%)					146 (56%)					129 (46%)					78 (39%)					73 (42%)				
School District	M	MSE	D	DSE	Total	M	MSE	D	DSE	Total	M	MSE	D	DSE	Total	M	MSE	D	DSE	Total	M	MSE	D	DSE	Total
Arlington	26	4	53	9	92 (33%)	8	6	58	16	88 (34%)	16	2	44	14	76 (27%)	7	0	29	7	43 (22%)	5	1	16	2	24 (14%)
Azle	0	0	1	0	1 (<1%)	3	0	2	1	6 (2%)	4	0	0	0	4 (1%)	0	0	0	0	0 (0%)	0	0	2	0	2 (1%)
Birdville	5	1	9	2	17 (6%)	4	0	7	2	13 (5%)	0	0	5	4	9 (3%)	2	0	8	0	10 (5%)	2	1	5	1	9 (5%)
Burleson	4	1	3	0	8 (3%)	0	0	0	0	0 (0%)	3	1	0	0	4 (1%)	2	0	1	0	3 (2%)	1	0	0	3	4 (2%)
Carroll	0	0	0	0	0 (0%)	2	1	0	0	3 (1%)	0	0	0	0	0 (0%)	0	0	0	0	0 (0%)	0	0	0	0	0 (0%)
Castleberry	4	0	9	0	13 (5%)	2	1	4	0	7 (3%)	3	1	3	1	8 (3%)	1	1	0	0	2 (1%)	0	0	0	0	0 (0%)
Crowley	2	0	0	1	3 (1%)	3	0	2	0	5 (2%)	3	0	0	0	3 (1%)	5	1	1	0	7 (4%)	1	0	0	0	1 (1%)
Eagle Mountain-Saginaw	1	1	3	2	7 (2%)	1	1	5	1	8 (3%)	4	0	5	0	9 (3%)	5	1	2	1	9 (5%)	22	0	1	1	24 (14%)
Everman	0	0	0	1	1 (<1%)	1	0	2	0	3 (1%)	0	0	0	0	0 (0%)	0	0	0	0	0 (0%)	0	1	0	0	1 (1%)
Fort Worth	46	11	20	8	85 (30%)	42	14	25	9	90 (34%)	64	14	32	2	112 (40%)	54	9	17	0	80 (40%)	38	5	25	4	72 (42%)
Grapevine-Colleyville	10	0	0	2	12 (4%)	3	2	1	1	7 (3%)	2	0	2	0	4 (1%)	8	0	1	0	9 (5%)	4	2	0	2	8 (5%)
Hurst Euless Bedford	11	0	0	1	12 (4%)	2	0	2	0	4 (2%)	8	2	0	2	12 (4%)	8	2	2	0	12 (6%)	4	0	1	0	5 (3%)
Keller	5	1	1	1	8 (3%)	6	1	0	1	8 (3%)	9	0	0	1	10 (4%)	3	0	0	0	3 (2%)	1	1	1	0	3 (2%)
Kennedale	2	1	0	1	4 (1%)	2	1	0	1	4 (2%)	6	0	3	0	9 (3%)	0	0	0	0	0 (0%)	0	0	0	0	0 (0%)
Lake Worth	3	0	4	0	7 (2%)	2	0	2	0	4 (2%)	1	0	1	0	2 (<1%)	1	0	4	0	5 (3%)	4	0	3	0	7 (4%)
Mansfield	6	1	4	1	12 (4%)	4	1	1	2	8 (3%)	0	1	2	2	5 (2%)	6	2	1	2	11 (6%)	1	1	6	0	8 (5%)
Northwest	0	0	0	0	0 (0%)	0	0	0	0	0 (0%)	1	0	0	0	1 (<1%)	0	0	0	0	0 (0%)	0	0	0	0	0 (0%)
White Settlement	0	0	0	1	1 (<1%)	2	0	1	0	3 (1%)	7	1	3	1	12 (4%)	3	0	0	2	5 (3%)	4	1	0	0	5 (3%)
Classified Special Education	M	D	Total	M	D	Total	M	D	Total	M	D	Total	M	D	Total										
LD	12	21	33 (65%)	20	24	44 (71%)	18	8	26 (55%)	9	5	14 (50%)	3	3	6 (23%)										
ED	5	4	9 (18%)	5	6	11 (18%)	1	6	7 (15%)	4	2	6 (21%)	4	6	10 (38%)										
OHI	3	3	6 (12%)	3	1	4 (6%)	2	6	8 (17%)	2	4	6 (21%)	4	3	7 (27%)										
LD/ED	1	1	2 (4%)	0	3	3 (5%)	0	1	1 (2%)	0	0	0 (0%)	1	0	1 (4%)										
ED/OHI	0	0	0 (0%)	0	0	0 (0%)	0	2	2 (4%)	1	0	1 (4%)	0	0	0 (0%)										
LD/OHI	0	0	0 (0%)	0	0	0 (0%)	2	1	3 (6%)	0	0	0 (0%)	0	0	0 (0%)										
MR	0	1	1 (2%)	0	0	0 (0%)	0	0	0 (0%)	0	1	1 (4%)	1	1	2 (8%)										
TOTAL	21(14%)	30 (22%)	51 (18%)	28 (24%)	34 (23%)	62 (24%)	23 (15%)	24 (19%)	47 (17%)	16 (13%)	12 (15%)	28 (14%)	13(13%)	13(18%)	26(15%)										

*Demographic information is presented for new referrals.

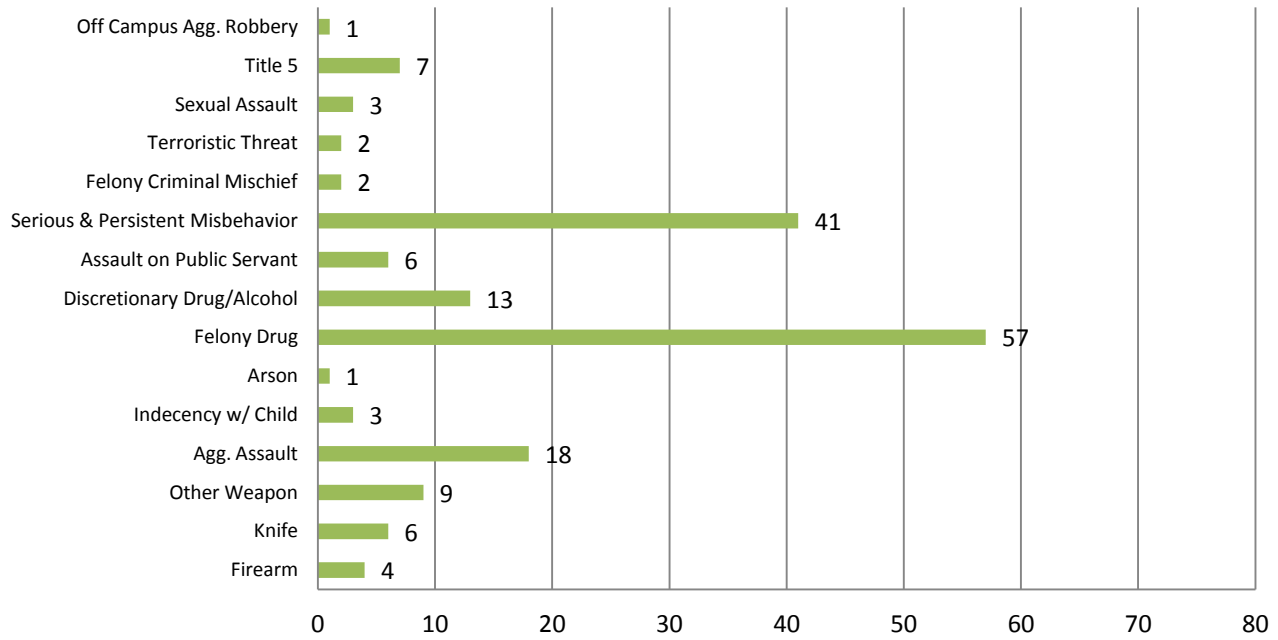
*M=Mandatory, MSE=Mandatory Special Education, D= Discretionary, DSE= Discretionary Special Education

	2007/08	2008/09	2009/10	2010/11	2011/12
New Referrals	N=283	N=262	N= 280	N=200	N=173
Gender					
Male	256 (90%)	225 (86%)	223 (80%)	165 (83%)	152 (88%)
Female	27 (10%)	37 (14%)	57 (20%)	35 (18%)	21 (12%)
Ethnicity					
African American	93 (33%)	101 (39%)	86 (31%)	69 (35%)	59 (34%)
American Indian	0 (0%)	0 (0%)	0 (0%)	0 (0%)	0 (0%)
Asian	9 (3%)	3 (1%)	3 (1%)	5 (3%)	3 (2%)
Caucasian	84 (30%)	54 (21%)	84 (30%)	46 (23%)	42 (24%)
Hispanic	97 (34%)	104 (40%)	106 (38%)	80 (40%)	69 (40%)
Other	0 (0%)	0 (0%)	1 (<1%)	0 (0%)	0 (0%)
Grade Level					
4 th	3 (1%)	2 (<1%)	0 (0%)	0 (0%)	0 (0%)
5 th	9 (3%)	0 (0%)	4 (1%)	2 (1%)	3 (2%)
6 th	9 (3%)	8 (3%)	15 (5%)	11 (6%)	9 (5%)
7 th	34 (12%)	34 (13%)	36 (13%)	25 (13%)	16 (9%)
8 th	51 (18%)	56 (21%)	51 (18%)	41 (21%)	47 (27%)
9 th	91 (32%)	89 (34%)	82 (29%)	54 (27%)	46 (27%)
10 th	37 (13%)	34 (13%)	48 (17%)	30 (15%)	32 (18%)
11 th	27 (10%)	28 (11%)	26 (9%)	11 (6%)	16 (9%)
12 th	22 (8%)	11 (4%)	18 (6%)	26 (13%)	4 (2%)

Tarrant County JJAEP Special Education Enrollment/Referrals



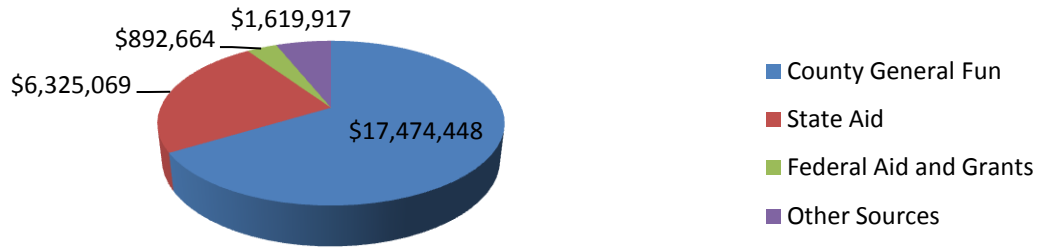
Tarrant County JJAEP Cause for Expulsion: 2011/2012



Tarrant County JJAEP Discharge Reason: 2011/2012

Discharge Reasons	Never Enrolled	Enrolled
Completed Expulsion Term	0	125
Graduated	0	1
Obtained GED	0	0
Enrolled or Court Ordered GED Program	0	5
ISD Rescinded Expulsion	5	13
ARD-ISD Rescinded Expulsion	0	0
Certified as an Adult	0	1
TYC	1	2
Jail (30 consecutive school days)	0	3
Placement/JPD	0	3
Placement/Parent	0	0
CPS Custody/Placement	0	0
Detention (30 consecutive school days)	0	2
Treatment (TYRC, Millwood, Excel)	0	20
Moved to Another District (out of Tarrant County)	5	13
Home School	1	1
Private School	0	3
Drop out/18-19 years of age	0	0
Unable to Locate	0	0
Truancy (40 consecutive unexcused absences)	0	1
Runaway/DTA (30 consecutive school days)	0	1
Adult Court Order-no contact with Minors	0	0
Total	12	194

Tarrant County Juvenile Services Source of Funds: Fiscal Year 2011



COUNTY GENERAL FUND:		\$17,474.448
General Fund - Administration & Probation	\$11,505,317	
▪ Includes support funding for JJAEP and Grant Match		
General Fund - Detention	5,926,519	
Children's Home Trust	3,996	
Probation Fees	25,613	
Miscellaneous Donations	10,034	
Interest Account	2,969	
STATE AID – TEXAS JUVENILE PROBATION COMMISSION		\$6,325,069
State Aid	\$ 984,864	
Community Reduction Program	617,455	
Salary Adjustment - State Aid	501,600	
Diversionsary Placement Fund	876,396	
Special Needs Diversionsary Program	271,000	
Intensive Community Based Pilot	219,426	
ICBP Regional Competitive	224,375	
Community Corrections Assistance	1,772,467	
Progressive Sanctions - JPO	619,758	
Progressive Sanctions - ISP	187,728	
JJAEP Reconnecting Youth	50,000	
Interagency	-	
FEDERAL AID AND GRANTS:		\$892,664
Title IV-E Reimbursements (Through TDPLRS)	\$549,938	
National School Lunch Program	151,299	
Breaking the Cycle of Violence Grant	24,976	
Juvenile Accountability Block Grant	166,451	
OTHER SOURCES:		\$1,619,917
JJAEP Mandatory Reimbursement - TJPC	\$707,840	
JJAEP Discretionary Reimbursement - ISD's	711,750	
STOP Level V Reimbursement-TJPC	200,327	
GRAND TOTAL – FY 2011 SOURCES OF FUNDS		\$26,312,098