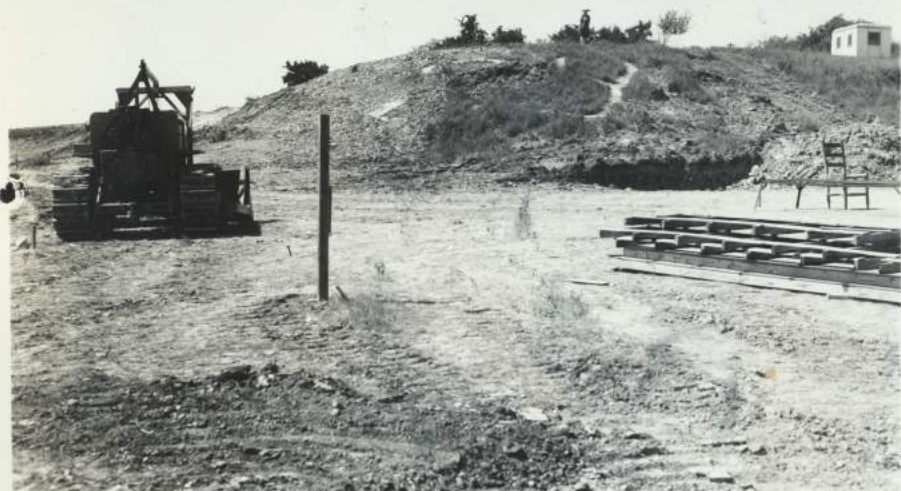


FOTODIARY



JUNE 30, 1946 - 1 SITE



JUNE 30, 1946 - 2 SITE



AUG 18, 1946 - 3 SITE



AUG 18, 1946 - 4 SITE

7



AUG 18, 1946 - 5 SITE



6 SITE



7 - SITE



8 - SITE



9-SITE



AUG 18, 1946 - 10 SITE

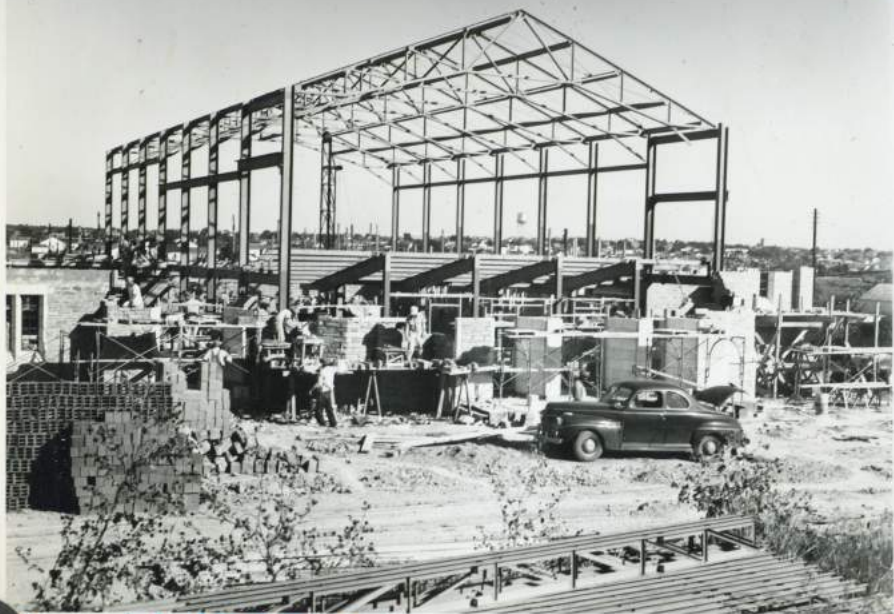


10 SITE GRADING

5-27-50



MAR 13, 1949 - 1 W



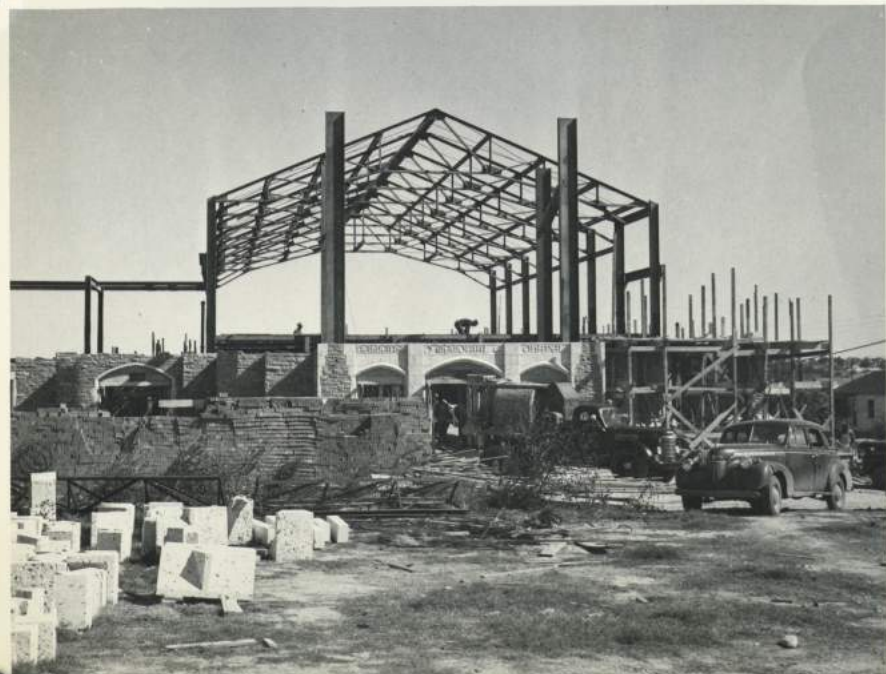
Oct 14, 1949 2W

1A



OCT 22, 1949 - 3W

1



Nov. 1, 1949 - 4W

2



Nov 5, 1949 - 5W

3



Nov 12, 1949 6W

4



Nov. 20, 1949 7W

5



Nov 26, 1949 8W

6



DEC 3, 1949 - 9W

7



DEC. 11, 1949 - 10W

86



DEC 17, 1949 - 11 W

98



DEC 24, 1949 - 12 W

10



DEC 31, 1949 - 13 W





JAN 5, 1950 - 14W



JAN 8, 1950 - 15W



JAN 8, 1950 - 16W

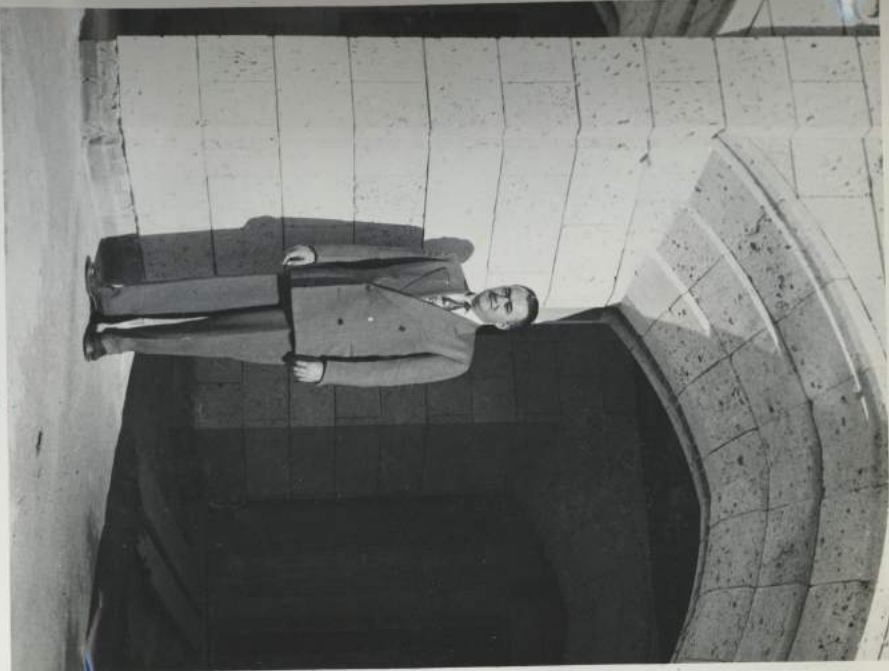


JAN 8, 1950 - 17W

JAN 8, 1950 - 18 W



JAN 8, 1950 - 19 W



JAN 14, 1950 - 20 W



JAN 22, 1950 - 21 W



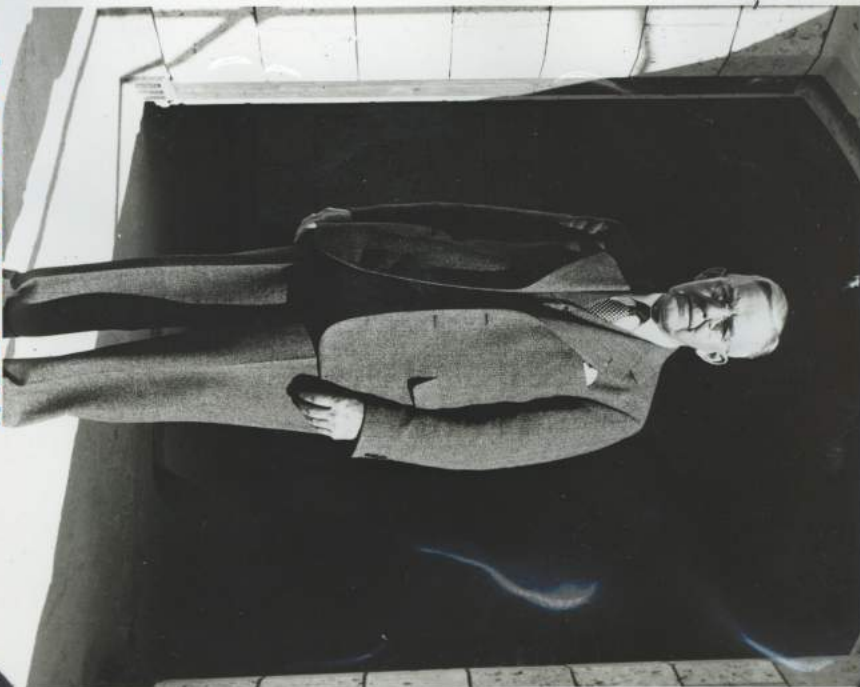
JAN 29, 1950 - 22W



FEB 5, 1950 - 23W



FEB 5, 1950 - 24W



JAN 25, 1950 - 25W



FEB 8, 1950 26 W



FEB 12, 1950 27 W



FEB 8, 1950 28 W



FEB 8, 1950 29 W



FEB 12, 1950 30 W



FEB 12, 1950 31 W

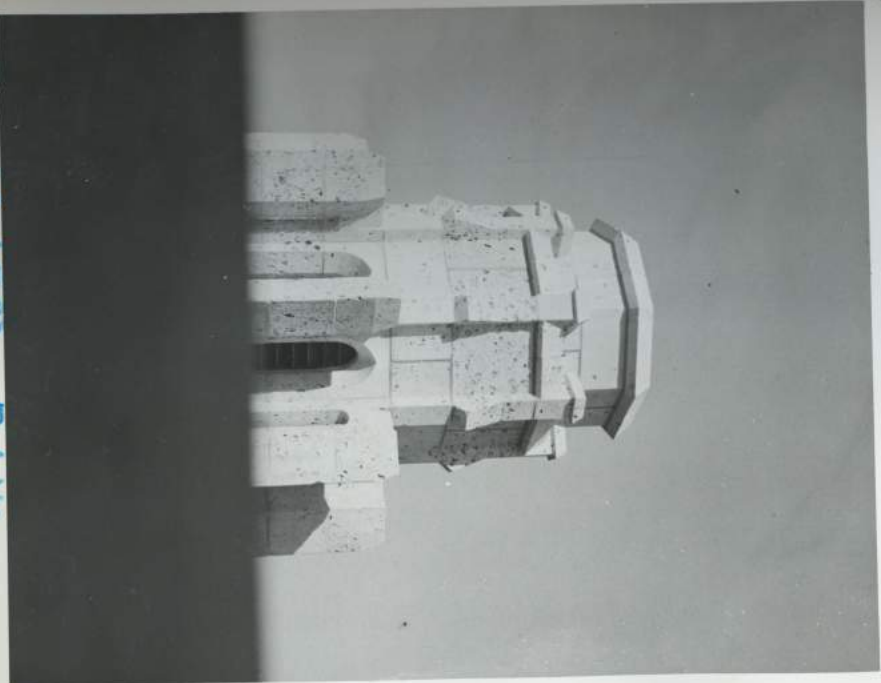


FEB 18, 1950 32 W



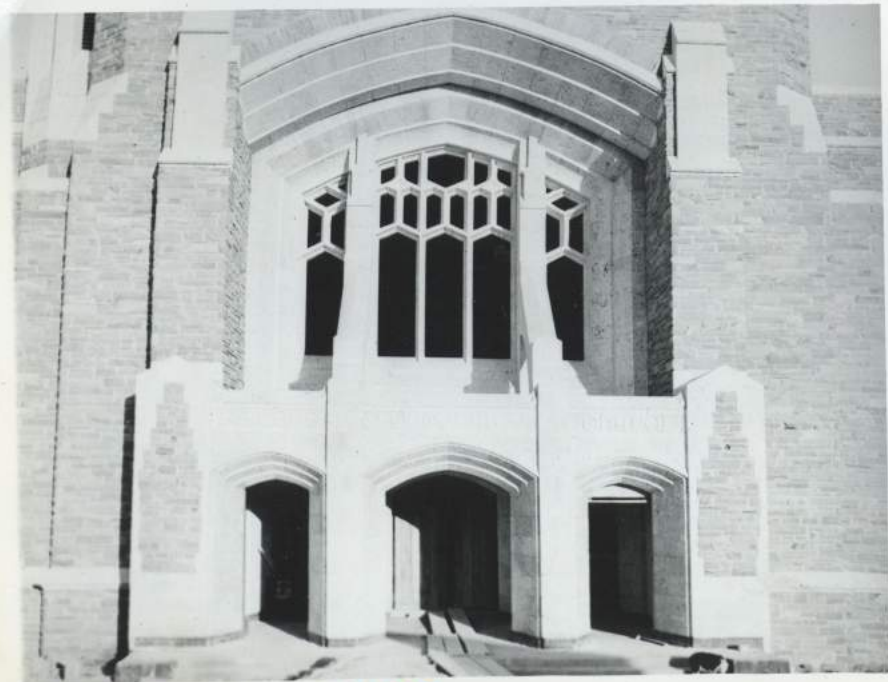
FEB 18, 1950 33 W

FEB 18. 1950 B4W



FEB. 18 1950 35W

"LAST STONE"



2-26-50 W 36



2-26-50 W 37



MAR 5, 1950 W 38



MAR 5, 1950 W 39



MAR 11, 1950 W 40



MAR 11, 1950 W 41



MAR 19, 1950 W 42



W 43 4-20-50



W 44 4-21-50



W 45 4-21-50





W 46

4-21-50

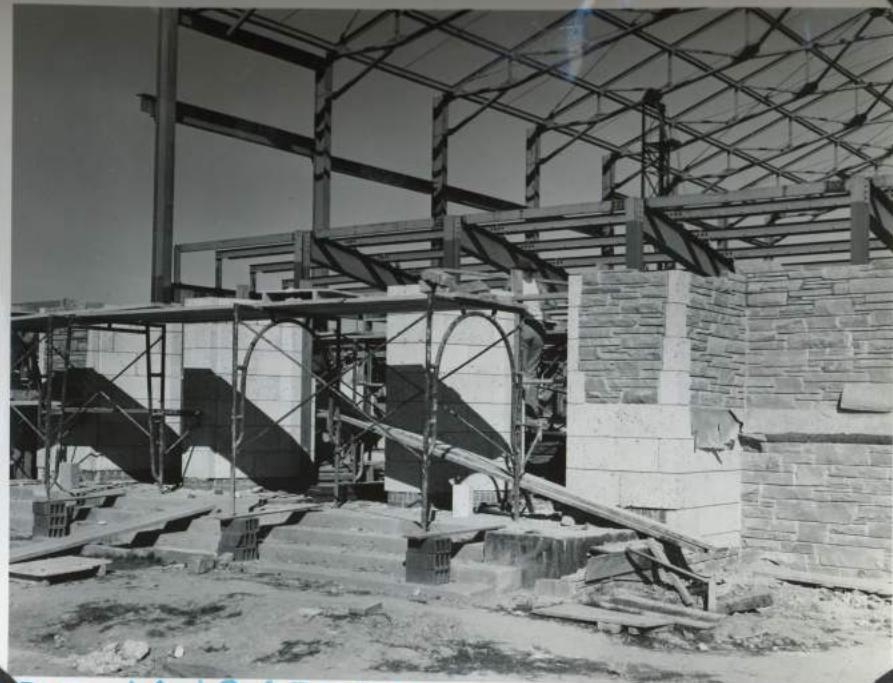


MAY 22, 1950

W 47



OCT. 14, 1949 - 1SW



OCT 14, 1949 - 2SW



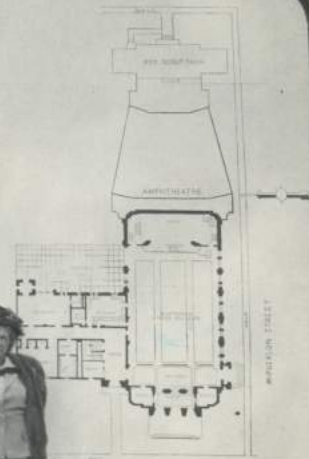
OCT 22, 1949 - 3SW

CHapel and EDUCATIONAL BUILDING  
OF THE  
**BROADWAY  
PRESBYTERIAN CHURCH**

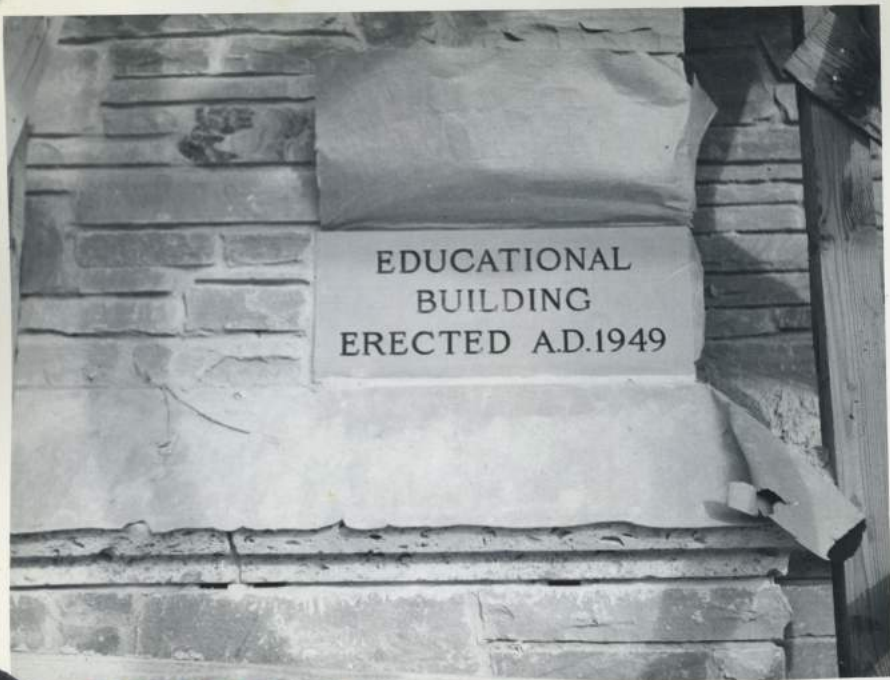
FORT WORTH · TEXAS

C.O. CHROMASTER A.I.A.  
ARCHITECT

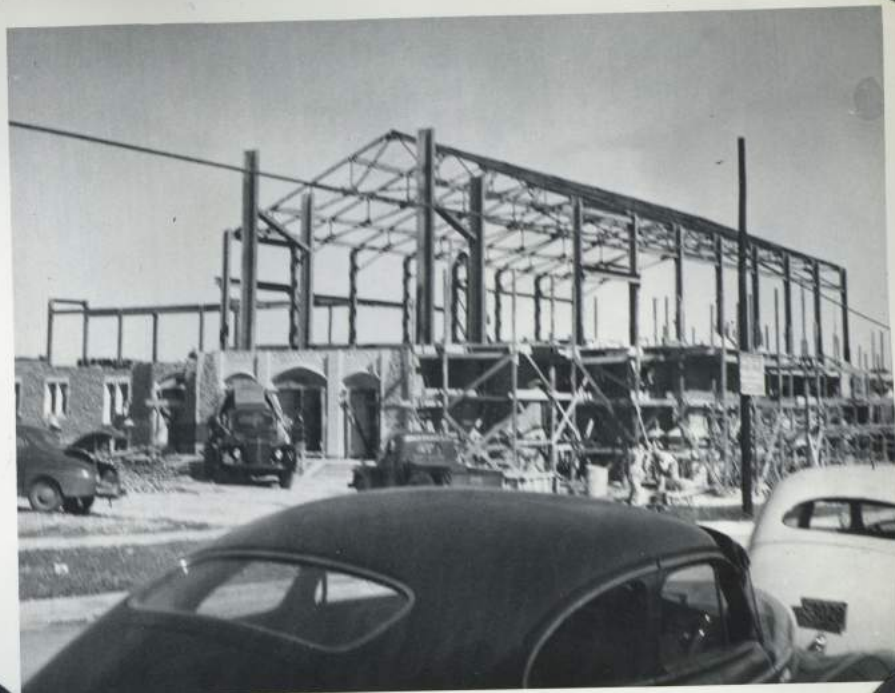
**THOS. S. BYRNE Inc**  
ENGINEERS & GENERAL CONTRACTOR



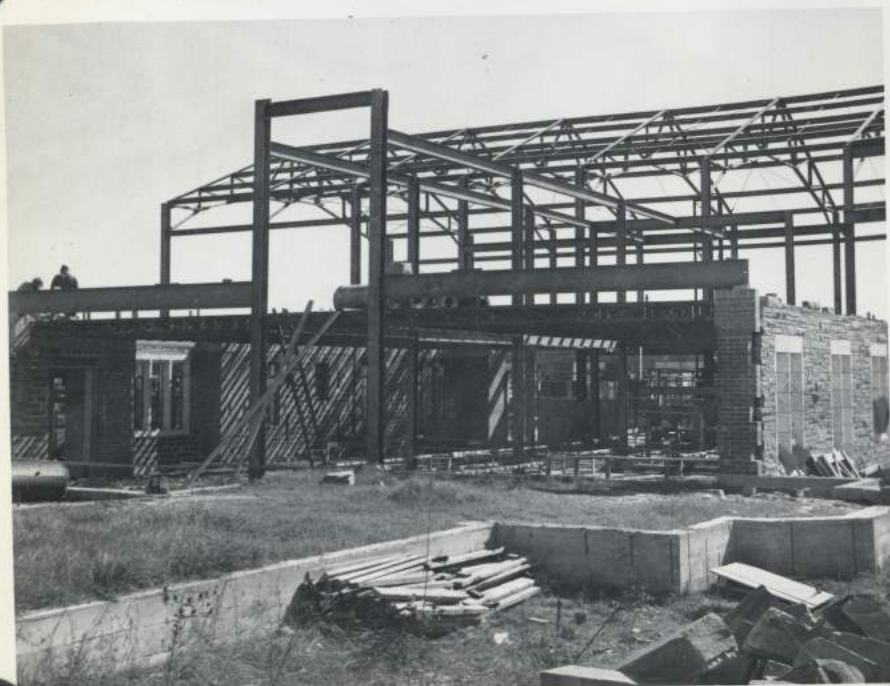
OCT 23, 1949 - 4SW



Oct. 22, 1949 - 5 SW



Nov. 1, 1949 - 6 SW



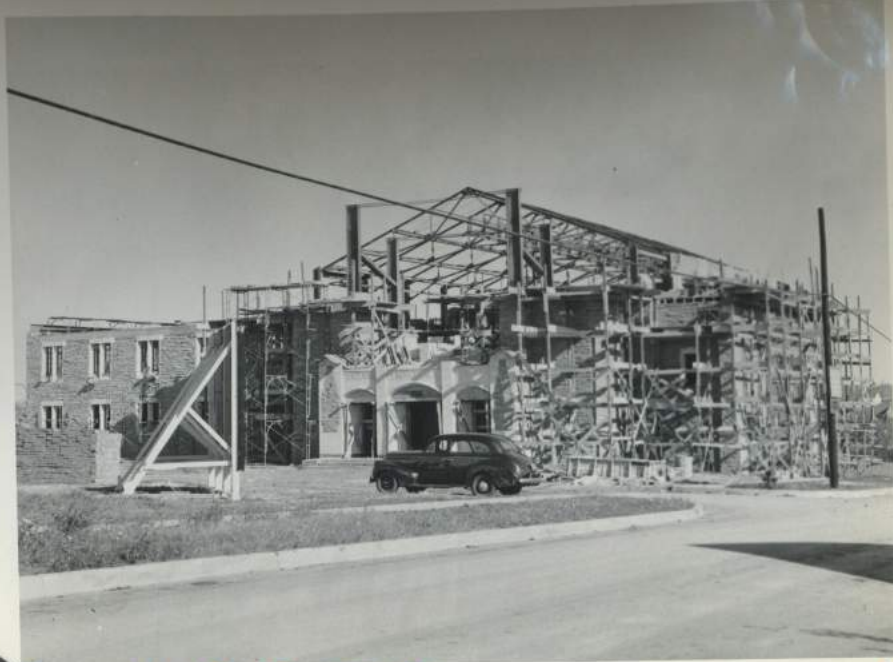
Nov. 1, 1949 - 7 SW



Nov. 5, 1949 - 8 SW

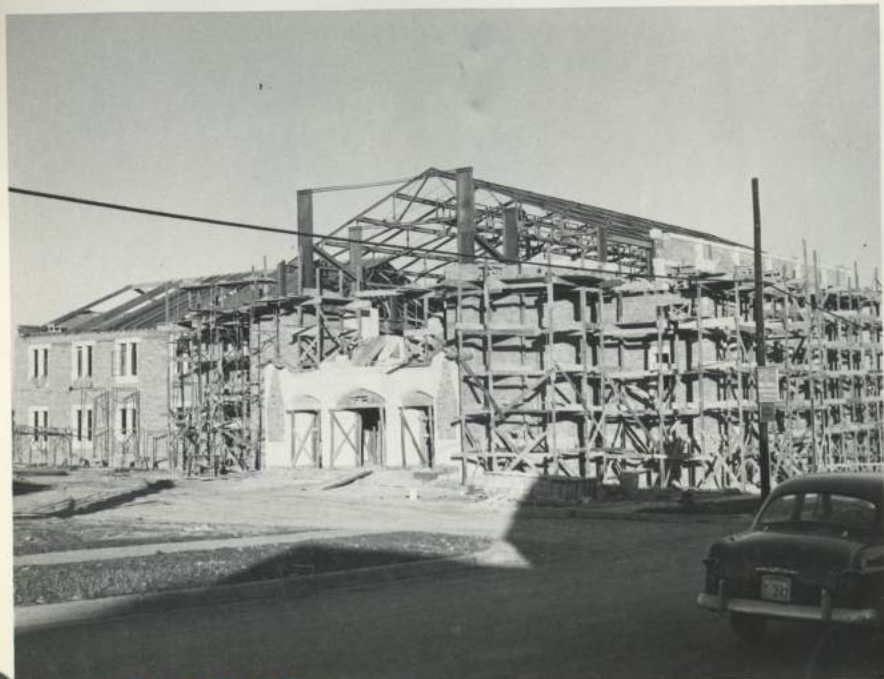


DEC. 3, 1949 - 9 SW

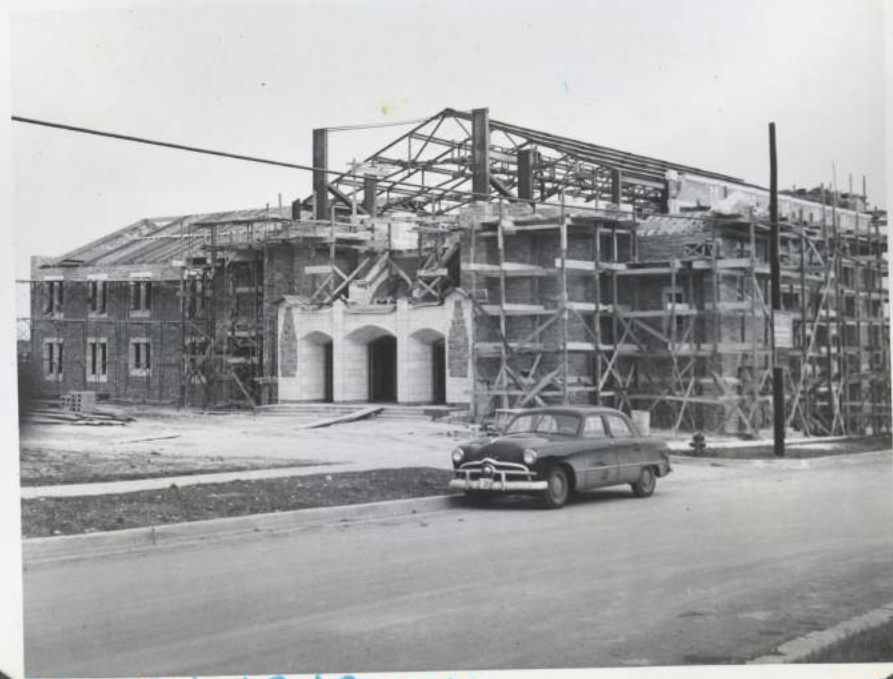


DEC. 11, 1949 - 10 SW

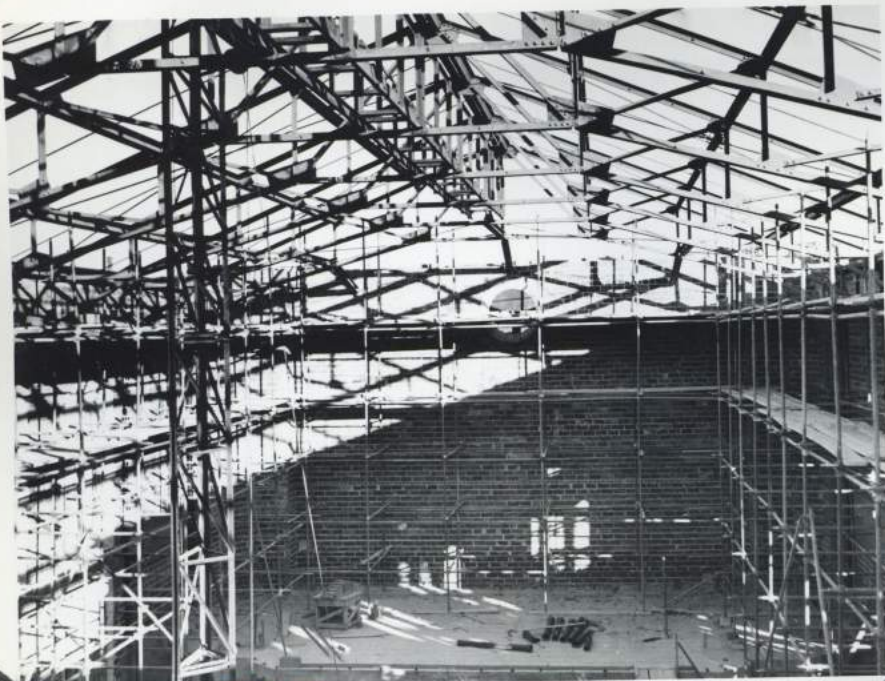
4



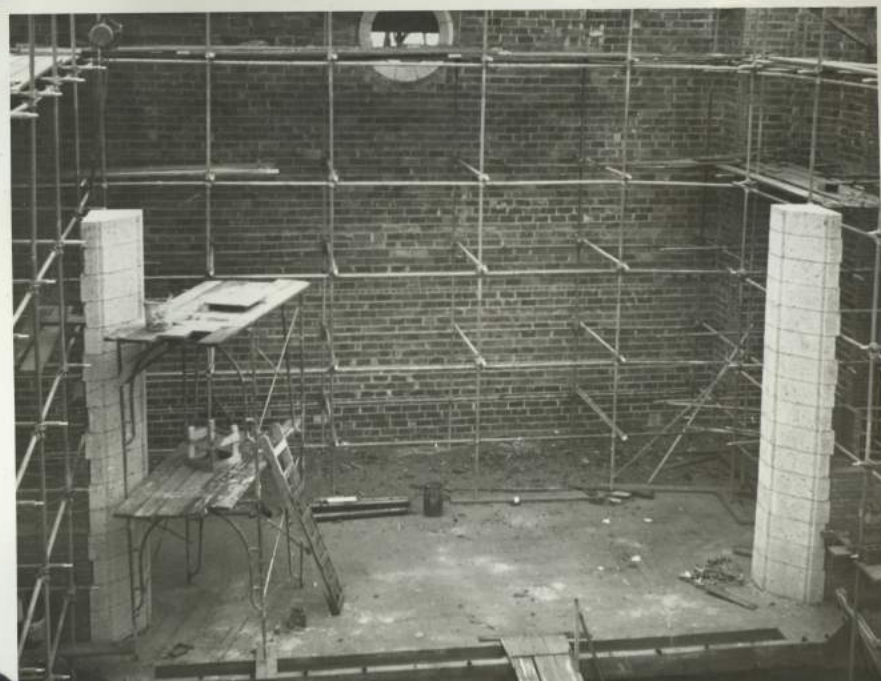
DEC 17, 1949 - 11 SW



DEC. 24, 1949 - 12 SW



DEC 24, 1949-135W



DEC 31, 1949-145W

ARCH COLUMNS



DEC 31, 1949-18 SW



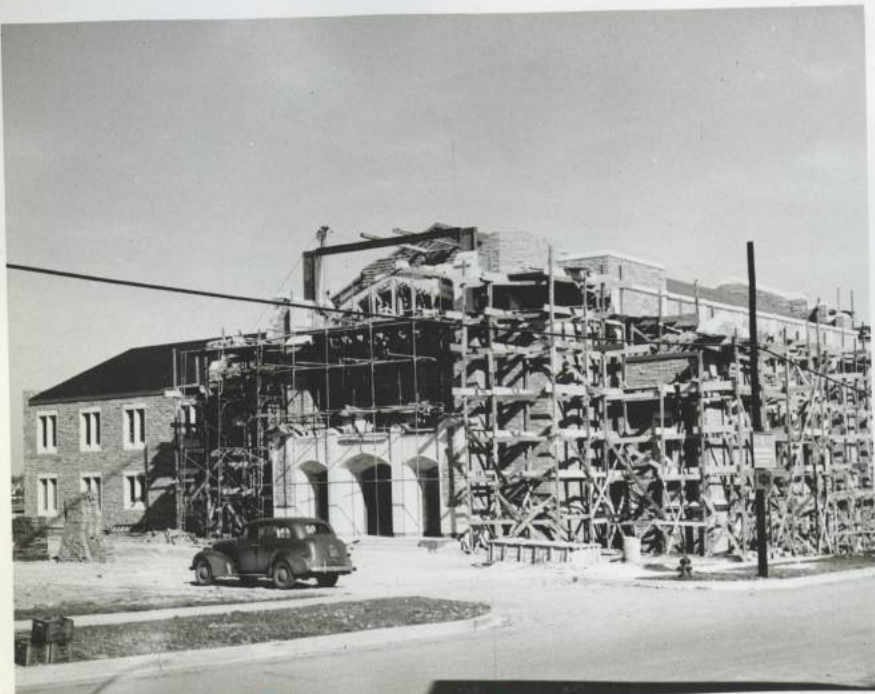
JAN 5, 1950-165W



JAN 22, 1950 - 21 SW



JAN 22, 1950 - 22 SW



JAN 29, 1950 - 23 SW

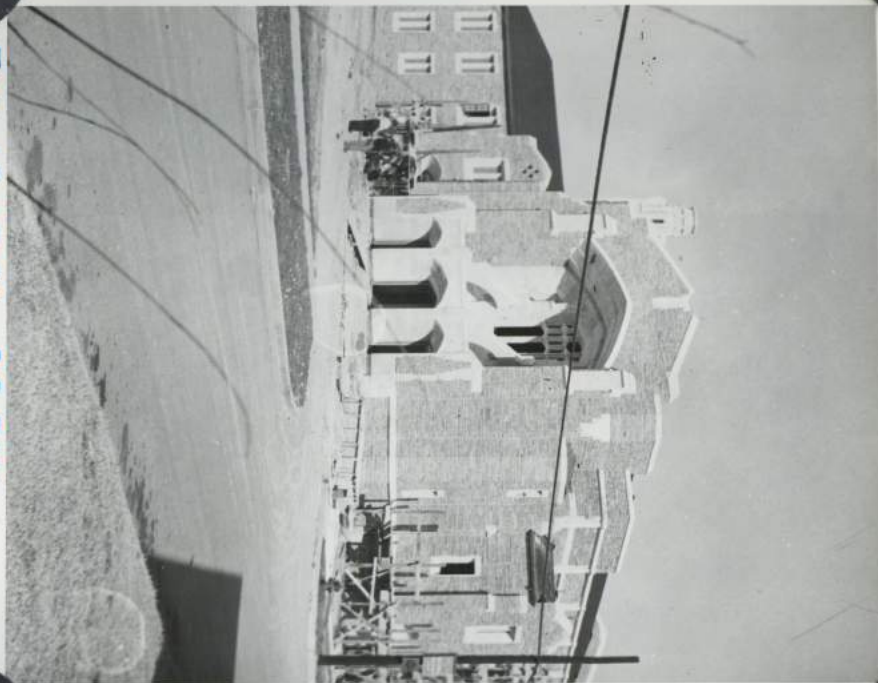


FEB 5, 1950 - 24 SW



FEB 12, 1950 25 SW

FEB 18, 1950 2C SW



2-26-50 SW 27



SW 28 MAR. 5, 1950

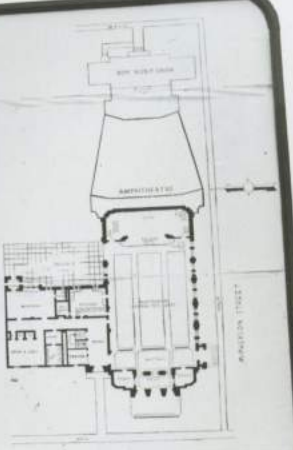


SW 2829 MAR 11, 1950



SW 2830 4-20-50

CHapel and Educational Building  
OF THE  
**ST. STEPHEN  
PRESBYTERIAN CHURCH**  
FORT WORTH · TEXAS  
C.O. CHROMASTER A.I.A.  
ARCHITECT  
**THOS. S. BYRNE Inc.**  
ENGINEERS & GENERAL CONTRACTORS

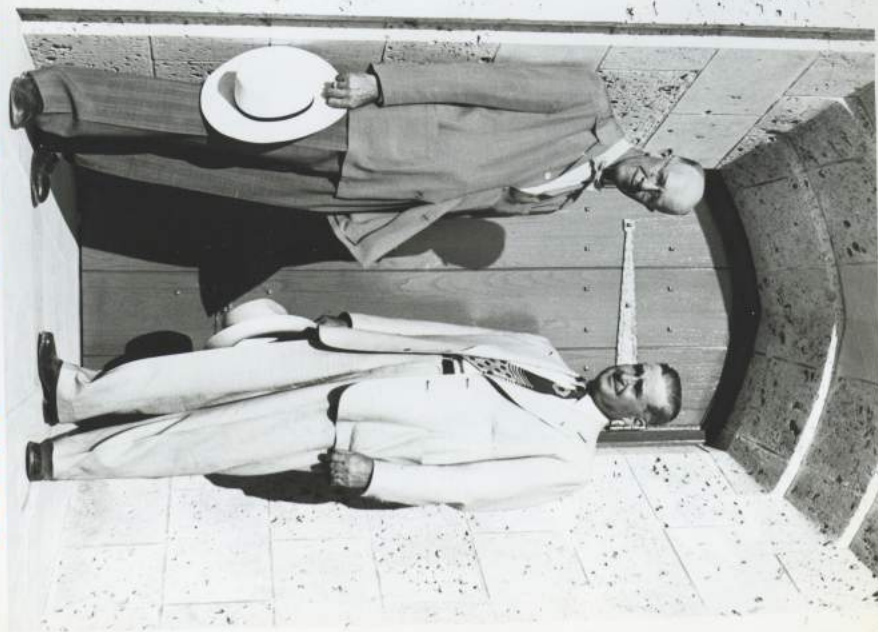


SW 2831

4-21-50

MAY 22, 1950

SW 32



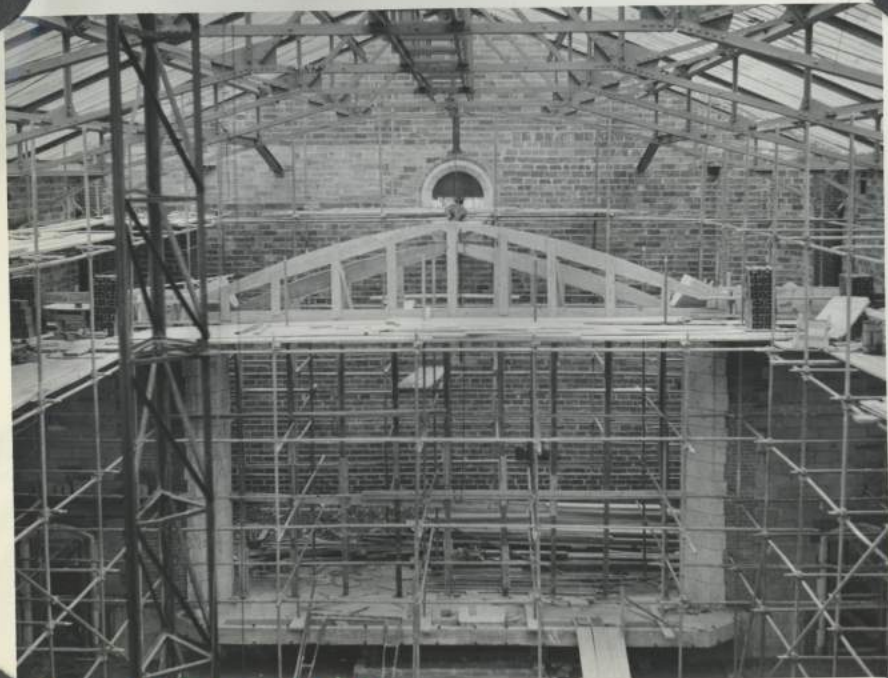




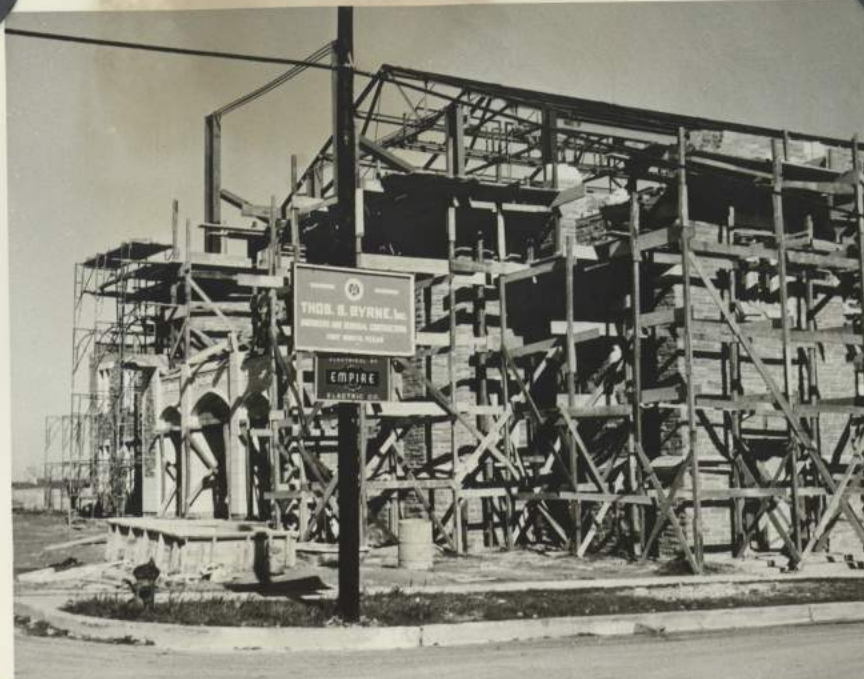
JAN 8, 1950 - 17SW



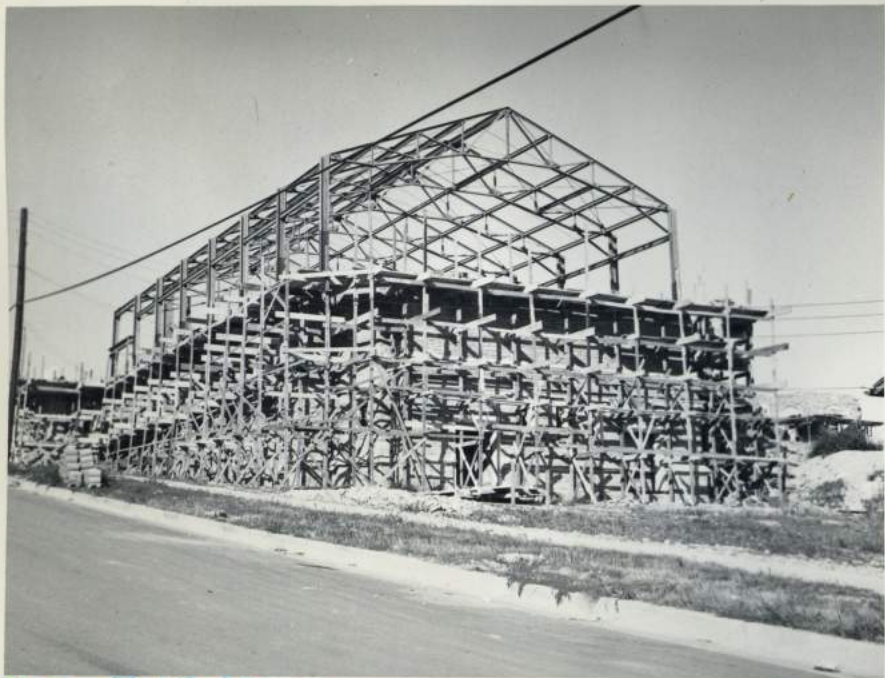
JAN 14, 1950 - 18SW



JAN 14, 1950 - 19SW



20SW



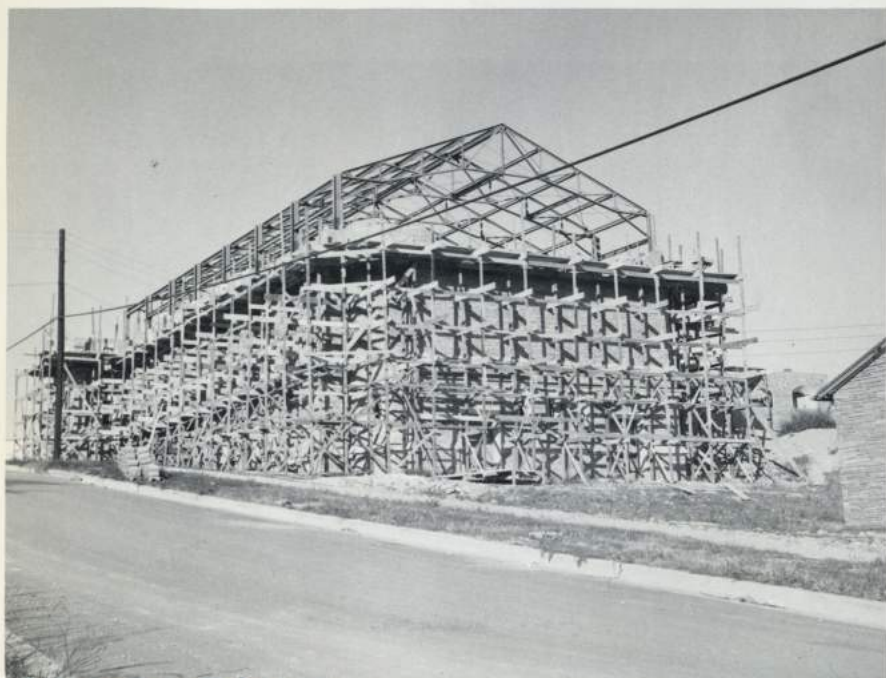
Nov. 5, 1949 - 1E

1



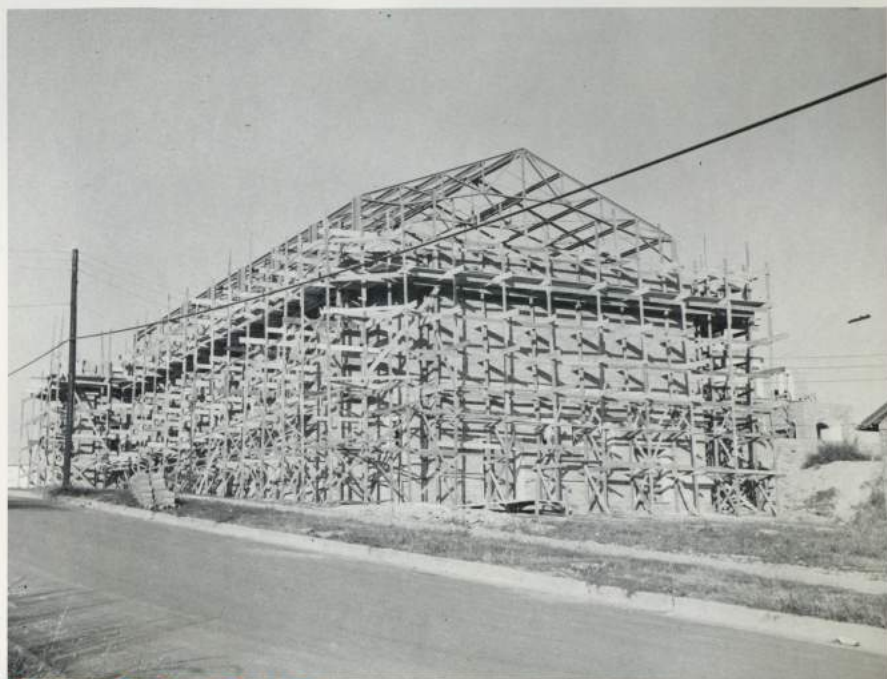
Nov. 12, 1949 - 2E

2



Nov. 20, 1949 - 3E

3



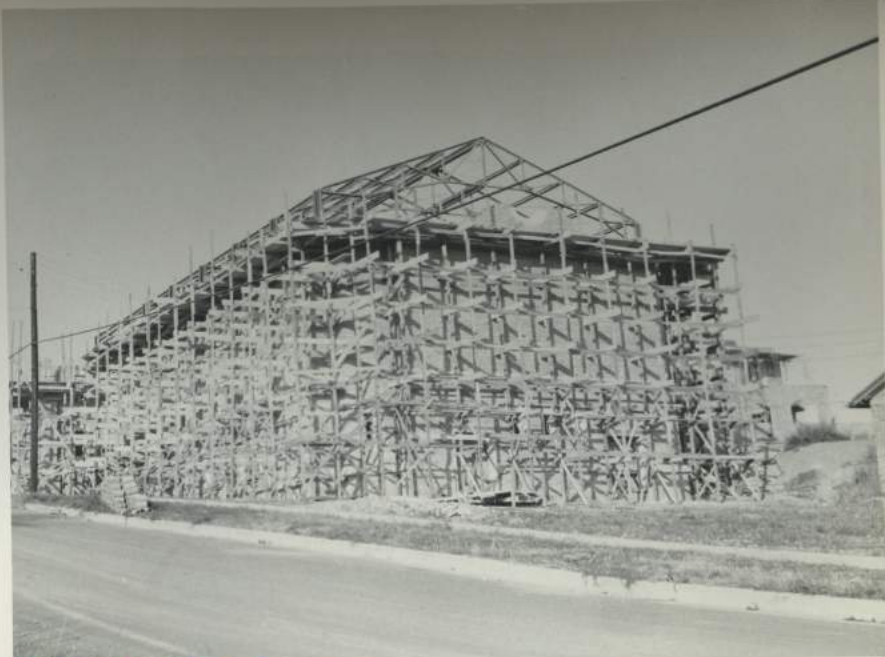
Nov. 26, 1949 - 4E

4



DEC. 3, 1949 - 5E

5



DEC 4, 1949 - 6-E

6



DEC. 11, 1949, - 7E

6



DEC. 17, 1949 - 8E

7



DEC. 24, 1949-9E

8



DEC 31, 1949-10E



JAN 5, 1950-11E



DEC 31, 1949 - TOP OF TENN FLINT STONE-10E



FEB 5, 1950 - 17E



FEB 18, 1950 - 18E



2-26-50 E 19



MAR 11, 1950 E 20



MAR 19, 1950 E 21



MAR 19, 1950 E 22



E 23 4-20-50



E 24 4-21-50



JAN 8, 1950 ALL STONE IN PLACE-13E



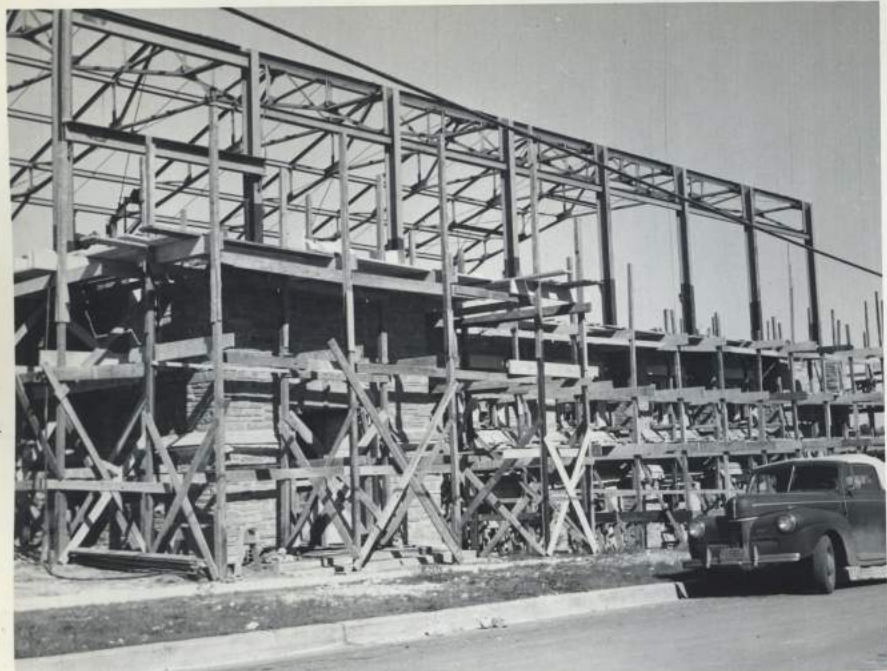
JAN 14, 1950-14 E



JAN 14, 1950-13E



JAN 22, 1950-16E



Nov. 1, 1949-1S

1



Nov. 5, 1949-2S

2



Nov 12, 1949-3S



Nov 12, 1949-4S





Nov 12, 1949-55

5



Nov 20, 1949-55

6



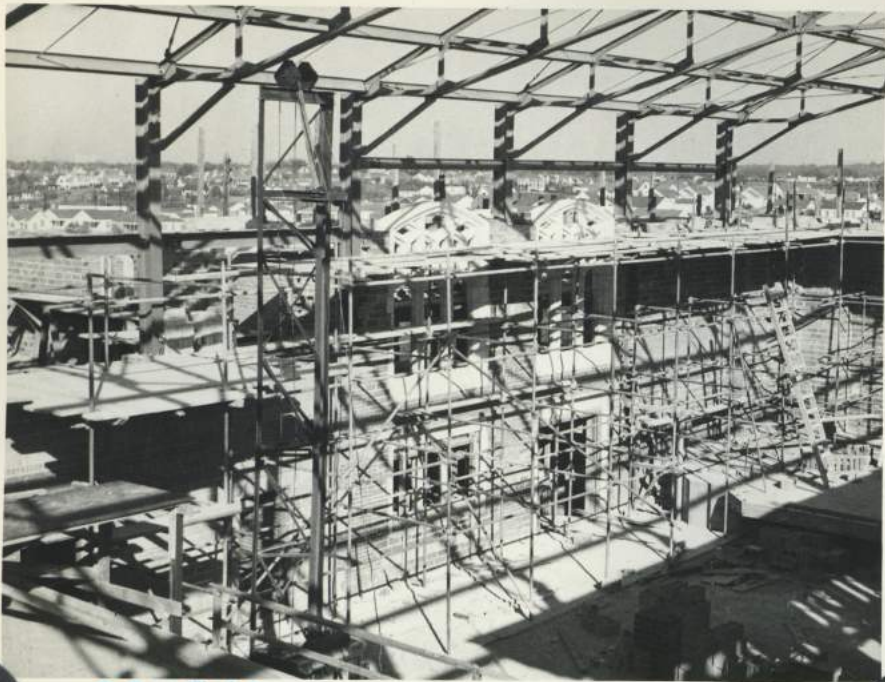
Nov. 26, 1949-75

7



Nov. 26, 1949-85

8



Nov. 26, 1949-95



DEC. 11, 1949-105



DEC. 11, 1949-115



DEC. 24, 1949-125

12



DEC 31, 1949 - Top SOUTH WALL - 135



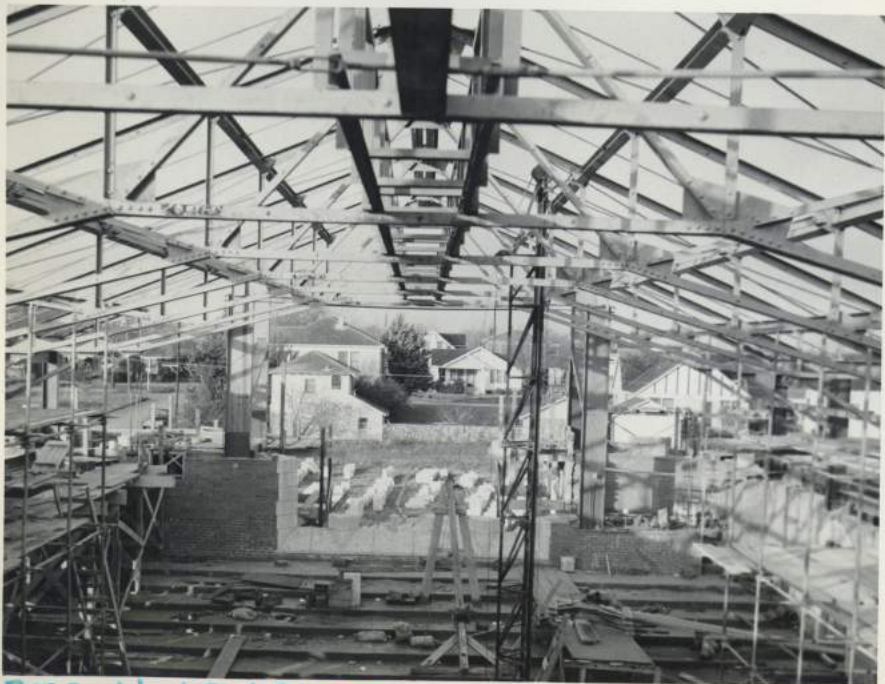
Nov. 1, 1949 - 2<sup>ND</sup> FLOOR STEEL JOIST.



Nov. 5, 1949-1B



Nov 26, 1949-2B



Dec. 11, 1949-3B



Nov. 5, 1949 - 1NW

1



Nov. 5, 1949 2NW

2



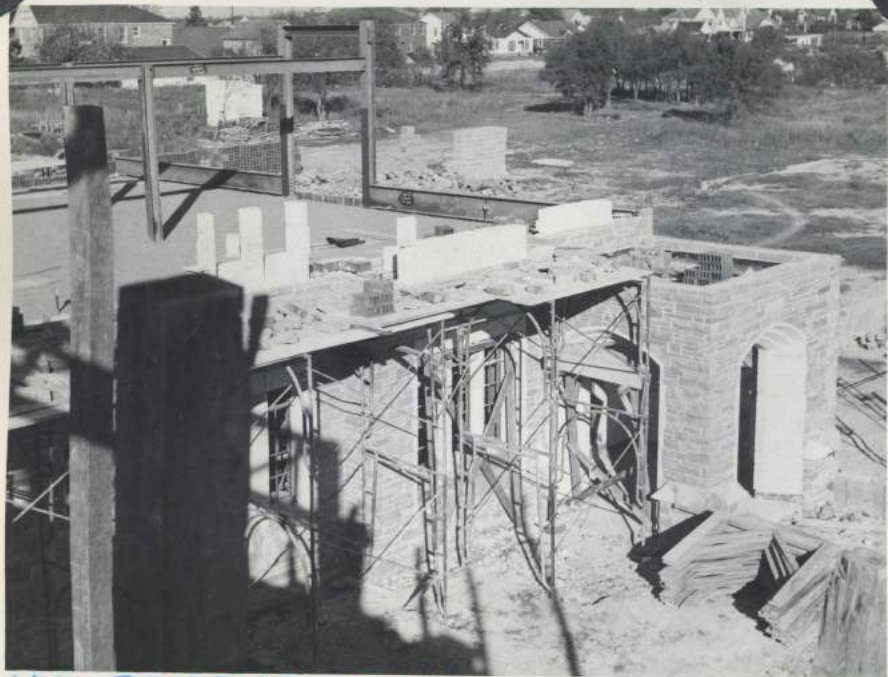
Nov. 12, 1949 - 3NW

3



Nov. 12, 1949 - 4NW

4



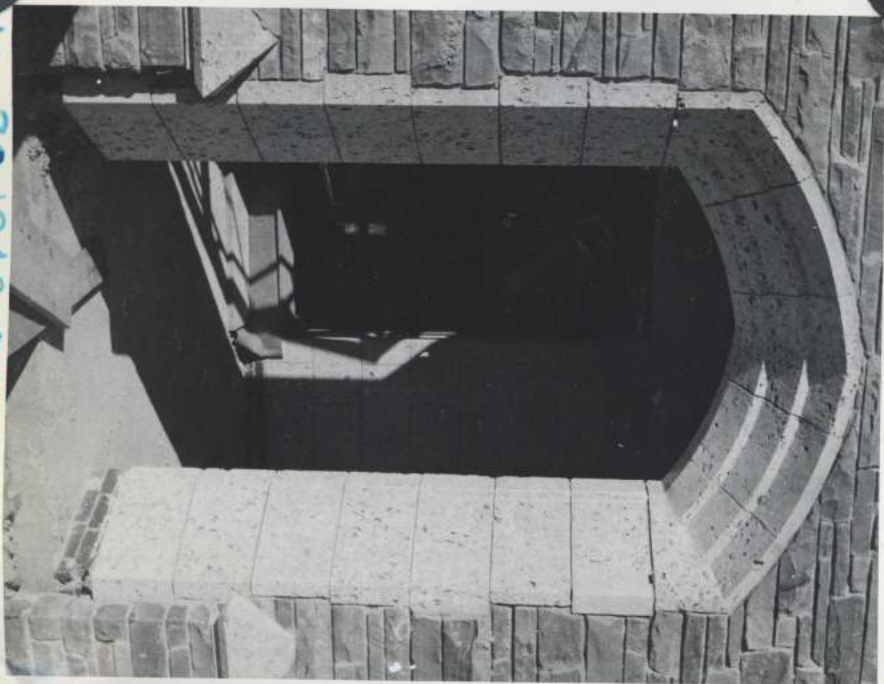
Nov 20, 1949-5NW

5



Nov. 26, 1949-6NW

6



Nov 20, 1949-7NW



Dec. 11, 1949-8NW

7

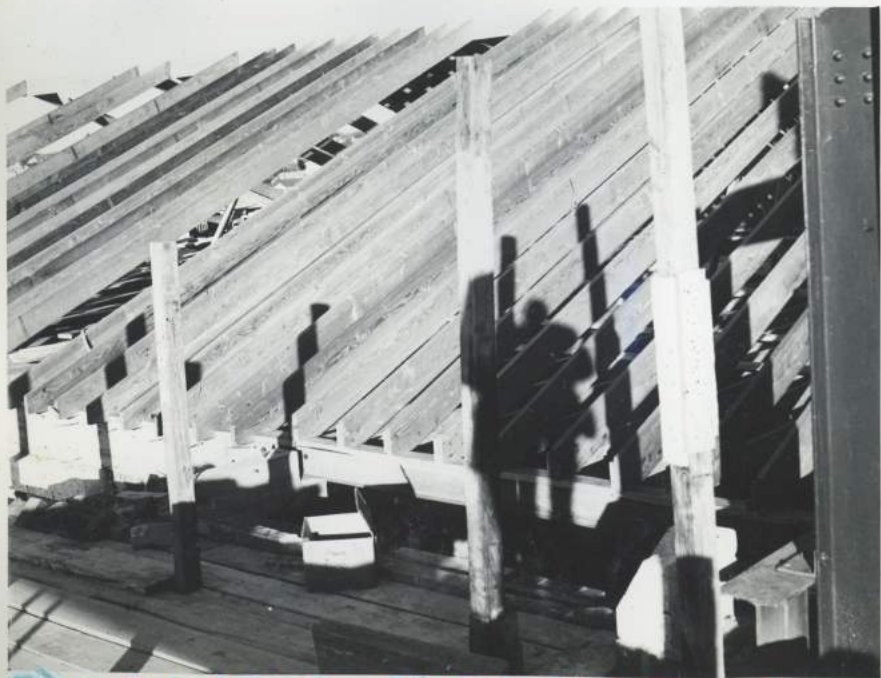


DEC 24, 1949 - 9 NW

8



DEC 31, 1949 - 10 NW



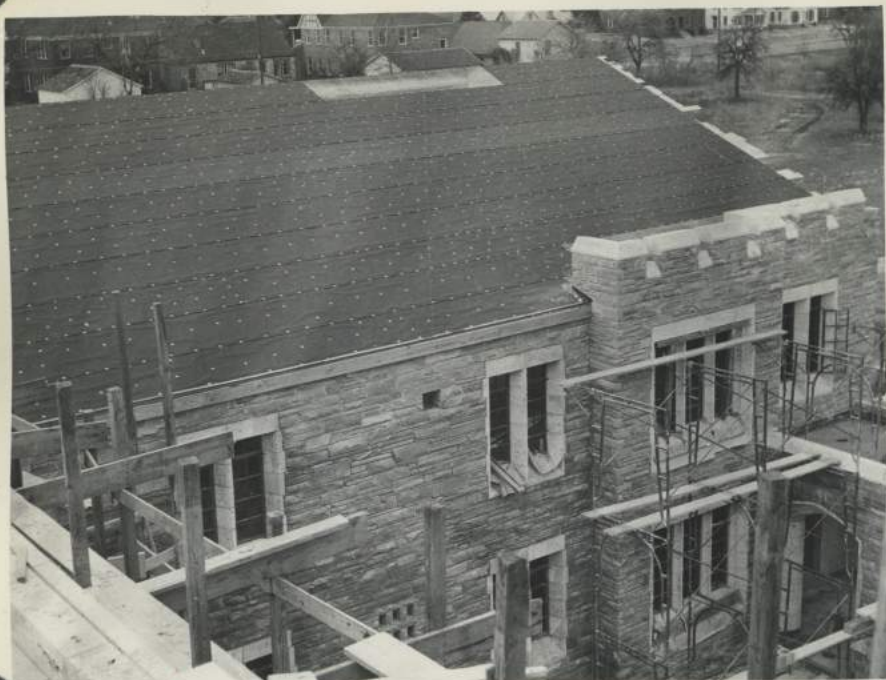
DEC. 24, 1949 - 2" x 10' x 28' ROOF RAFTERS  
11 NW



JAN 8, 1950

12 NW

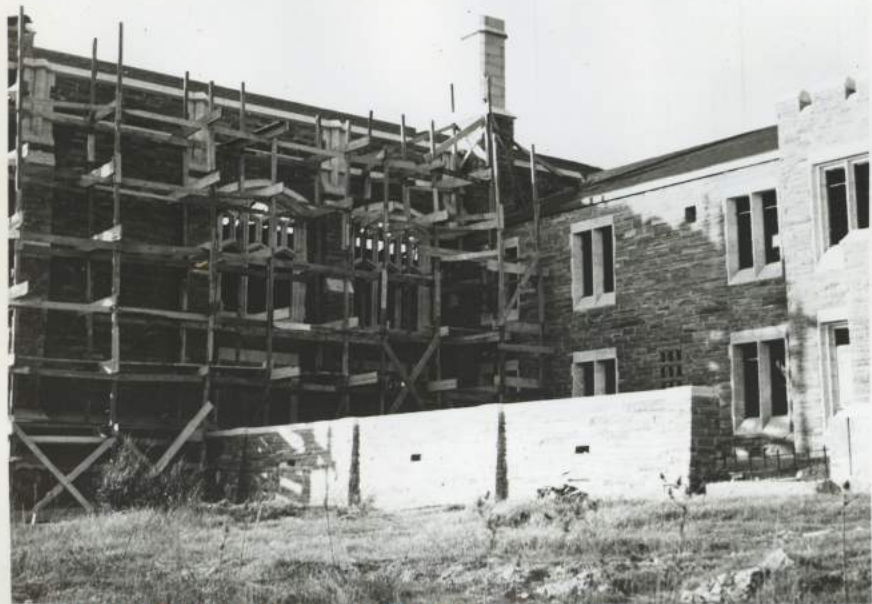




JAN 14, 1950 13 NW



14 NW



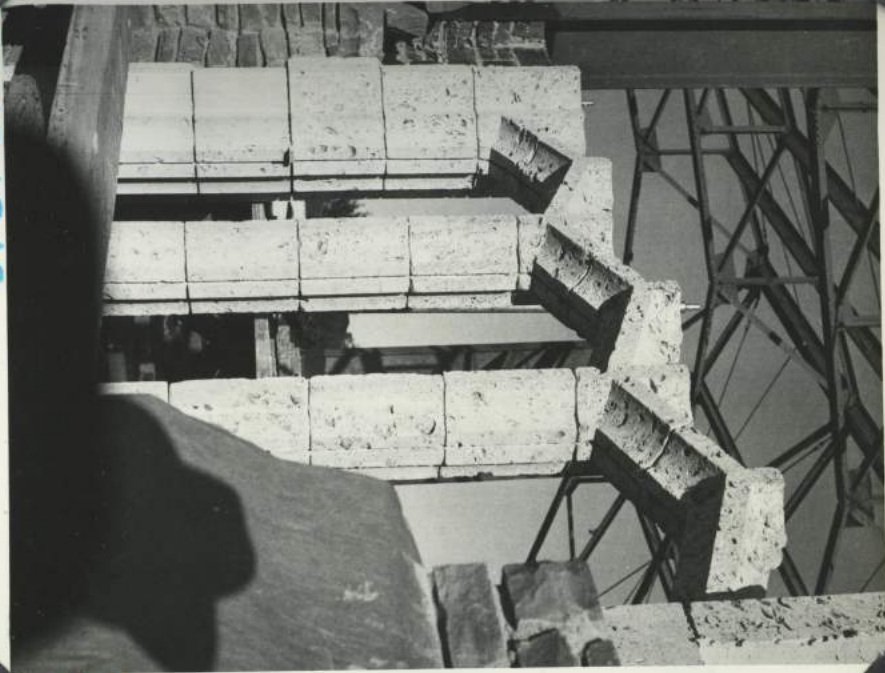
JAN 25, 1950-15 NW



FEB 18, 1950 16 NW

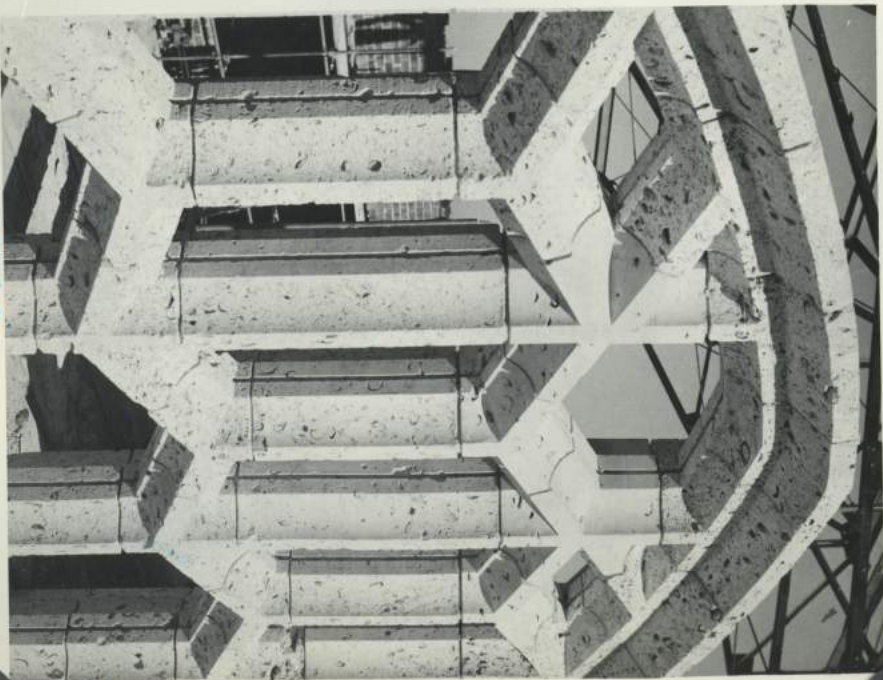


OCT 14, 1949 - 1 M



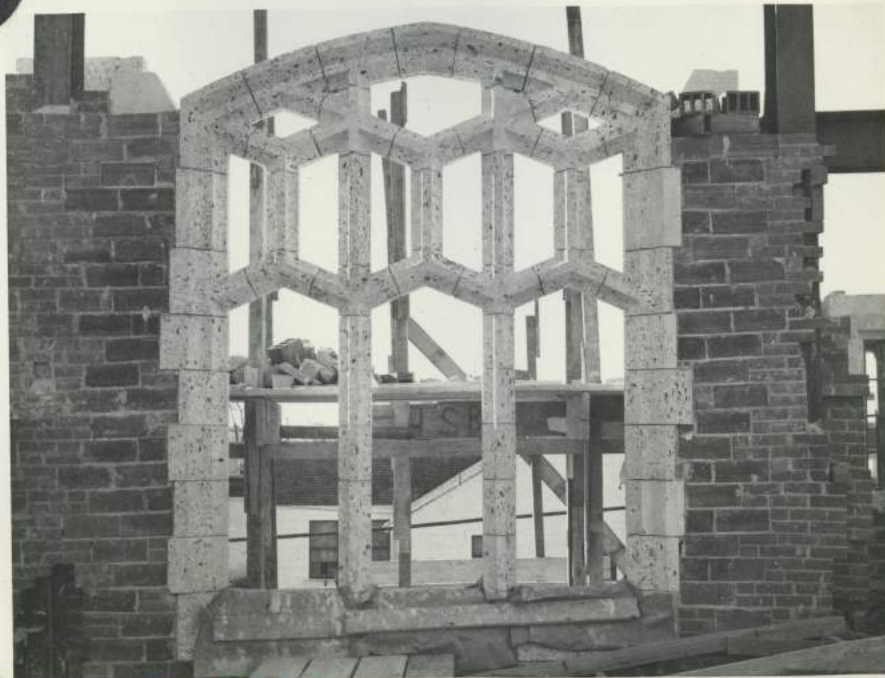
NOV 12, 1949

2 M

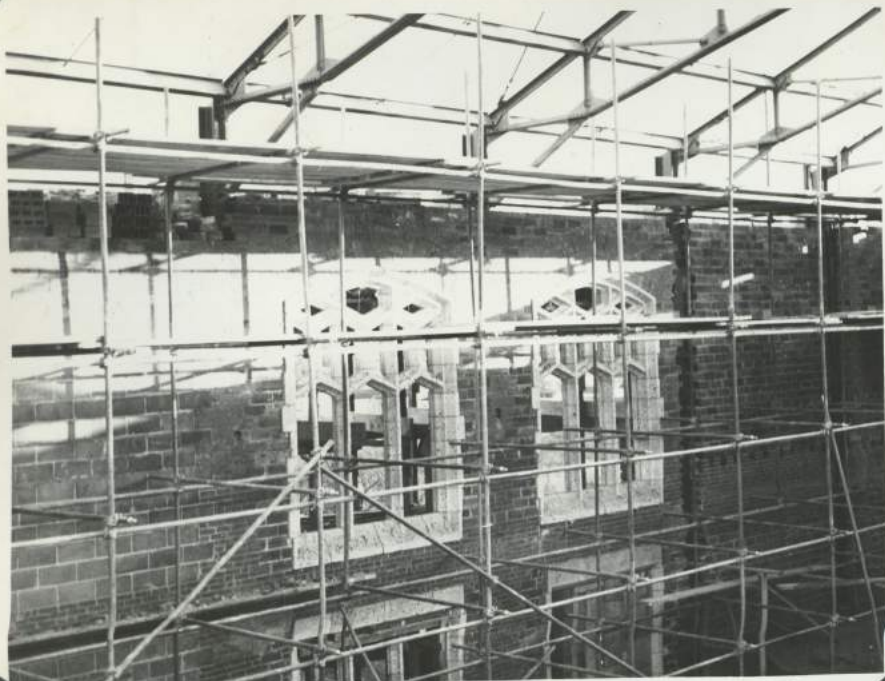


NOV 20, 1949

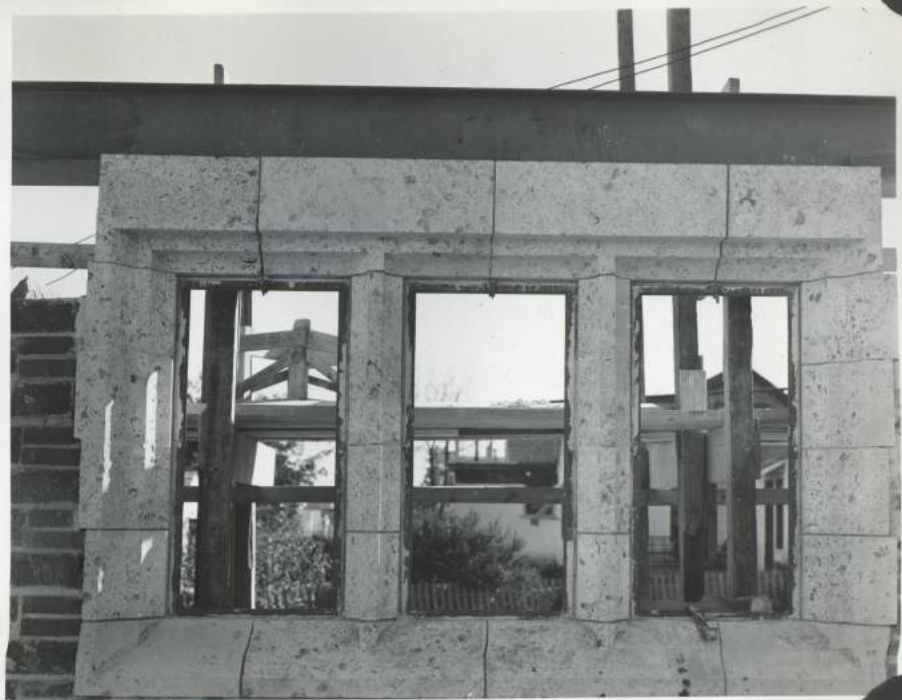
3 M



NOV 20, 1949 - 4 M



OCT 11, 1949-5M



OCT 14, 1949-6M



OCT 14, 1949- CUT SHELL STONE 7M



OCT 14, 1949- COMPLICATED CUT STONE 8M



OCT. 14, 1949 WALL BOND STONE 9 M



NOV. 12, 1949 WALL CORNER BOND STONE 10 M



JAN 5, 1950 - ARCH STONE OF 20 FACES 11 M



JAN 14, 1950 12 M



3-19-50 M 13



M 14 4-11-50



M 15 4-11-50



M 16 4-11-50



M 17 4-11-50



M 18 4-11-50



M 19 4-11-50



M 20 4-11-50

M 21

4-11-50



M 22

4-21-50



M 23

4-21-50

M 24

4-21-50





MAY 22, 1950

M 25



MAY 22, 1950

M 26



